

SUMMER

2024

Hydrangea paniculata
'Grandiflora'
(Panicle Hydrangea)



YEW
DELL
BOTANICAL
GARDENS



“THE GLORY OF GARDENING: HANDS IN THE DIRT, HEAD IN THE SUN, HEART WITH NATURE. TO NURTURE A GARDEN IS TO FEED NOT JUST THE BODY, BUT THE SOUL.” -ALFRED AUSTIN

EXECUTIVE DIRECTOR'S LETTER

Summer in the Garden . . .

There is an art to enjoying the summer garden. Past is the rush of getting everything off the driveway and into the ground. Complete (hopefully!) are all the leaky hose bib repairs, the artful snaking of hoses behind the AC compressor, and arrangement of all the containers. The crush of spring offers little time for catching one's breath or savoring the moments. Spring is the time to get it all done.

But summer... summer is when you slide into the routine of maintenance mode, into the pre-breakfast waterings with a cup of tea, twilight weeding amidst the flickering fireflies, and hopefully, the enjoying and the observing. Summer is the time to take stock and to listen to the gentle reminders from Mother Nature.

This summer, Yew Dell offers endless ways for you to kick back and enjoy the garden. Take in an evening concert. Go for a hike on the trails. Enjoy lunch overlooking the pollinator meadow. Just sit on a bench and soak it all in.

Of course you can delve into more active learning as well. Pick out a class on a topic you've always wanted to understand in greater detail. Put that silly cell phone to work on a walk around Yew Dell, looking for plant combos you've not thought of, plants you've never seen, or other inspirations. I don't know about you but scrolling back through garden photos from past seasons can, for me, be

a great reminder of all those things I planned to do but never got to. Maybe in hindsight they're better... or worse ideas than they seemed at the time.

However you choose to do the summer garden, at Yew Dell or at home, remember that this is the time to enjoy all the fruits of your spring labor. Soak it all in!

Happy Gardening!

Paul Cappiella



Scan the QR code to register & for more info.
Register right away—classes will fill quickly.
Don't delay—early enrollment is suggested!
All listed programs are scheduled to be in-person unless otherwise noted.



CLASSES AND EVENTS



BOTANICAL PAPER MAKING WITH SEEDS

SATURDAY, JULY 13 • 1:00 PM – 2:30 PM

MEMBERS \$60 PER PAIR / NON-MEMBERS \$70 PER PAIR

Back by popular demand, we have Briahna Michalsky, a local botanical artist, leading a new workshop on botanical paper making! This time, we're adding seeds that you can plant. We're also rolling out a "two-for-one" format for this workshop where one ticket allows two guests to participate together, so bring a date, a friend, or family member! This workshop is appropriate for ages 5 and up, as long as one guest in the pair is 18 or older.

Fees include all supplies, but you can bring your own dried flowers or seeds if you like. You'll take home your hand-made paper that you then can use as a note card, bookmark, or gift tag—or plant for early autumn blooms!

PLANT BITES: POLLINATORS AND COST SHARE WORKSHOP WITH LUNCH

TUESDAY, JULY 16 • 12:00 PM – 1:30PM

MEMBERS \$45 / NON-MEMBERS \$55

Mason Quiram, District Program Director for Oldham County Conservation District, will lead a discussion on pollinators and the importance of including pollinator plants in our gardens. He will also share details on a Pollinator Habitat Cost Share program for Oldham County residents, but attendees outside of Oldham County can still benefit from this information.

Ticket includes the lecture plus lunch with sandwich buffet from Martha Lee's Kitchen, a pollinator plant from Yew Dell's nursery, and time to enjoy the gardens. Jeff Margreiter, Nursery & Greenhouse Manager, can also help guests wishing to purchase additional plants.



GREEN DRINKS WITH LOUISVILLE SUSTAINABILITY COUNCIL

WEDNESDAY, JULY 17 • 6:00 PM – 8:00 PM

Join us for an evening with our friends at the Louisville Sustainability Council and learn about Yew Dell's efforts to support ecological, human, and economic health for our region.

SOIL HEALTH

WEDNESDAY, JULY 24 • 6:00 PM – 7:30PM

MEMBERS \$25 / NON-MEMBERS \$35

Julia Kachanova, University of Louisville PhD Biology student, shares her current research on the implications of modern life on the health of our soil, and what happens when we have unhealthy soil.



MANAGING INVASIVE PLANTS SEMINAR WITH KSU FORESTRY & YEW DELL STAFF

TUESDAY, JULY 30 • 9:00 AM – 1:00PM

MEMBERS \$40 / NON-MEMBERS \$50

We are partnering with our colleagues from Kentucky State University's Forestry Staff in Frankfort to discuss the timely issue of invasives. In this half-day format, we'll have four 30-minute sessions: identifying invasives, control techniques in the field and forest, control techniques in the garden, and viable replacements once you've removed your invasives.

Ticket includes a box lunch, time to socialize, and plus an opportunity to enjoy Yew Dell's gardens.



HOST PLANTS FOR INSECTS

WEDNESDAY, AUGUST 21 • 2:30 PM – 4:00PM

MEMBERS \$40 / NON-MEMBERS \$50

It's not just Monarch caterpillars and milkweed, many insects need a specific plant to complete their life cycle. Join Jeff Margreiter, our Nursery & Greenhouse Manager, and Jacob Stidham, our Director of Horticulture & Facilities, as they go way beyond the Monarch and talk about the many, many other plants in the garden that provide a niche source of food for insects.

Ticket includes host plant from Yew Dell's nursery.



BOTANICAL DYE WORKSHOP

SATURDAY, AUGUST 24 • 1:30 PM – 3:00PM

MEMBERS \$50 / NON-MEMBERS \$60

Briahna Michalsky, a local botanical artist, brings another facet of her artistry – botanical dyes. In this workshop, she will demonstrate a variety of dye methods (such as hammering and steaming), and participants will each get to select one process to make either a custom scarf or hand towel to take home.

Ticketing fees include all supplies.



PLANTS AND THEIR PESTS AT YEW DELL

WEDNESDAY, SEPTEMBER 4 • 1:00 PM – 2:30 PM

MEMBERS \$25 / NON-MEMBERS \$35

A plant roots where it germinates or is planted. Disease, insects, and the greatest pest of them all – humans – are mobile and can be quite bothersome to the flora in our gardens. Join Jeff Margreiter, our Nursery & Greenhouse Manager, Sayde Heckman, our Garden & Arboretum Manager, and Jacob Stidham, our Director of Horticulture & Facilities, as they split up and discuss each of these pests in separate walks around the gardens here at Yew Dell. Three walks in one!



FALL WREATHS FROM THE GARDENS

SATURDAY, SEPTEMBER 14 • 9:00 AM – 11:00 AM OR 1:00 PM – 3:00 PM

MEMBERS \$75 / NON-MEMBERS \$85

Wreaths aren't just for the winter holidays! As the gardens start to go dormant, they provide an abundance of material for decorating. Join Garden & Arboretum Manager, Sayde Heckman, and Yew Dell Gardener, Chelsea Hicks, as they share the fun of building a wreath with material collected around the gardens, including dried flowers harvested from our Cut Flower Production Garden over the summer.

PLANT BITES: COMPOSTING WORKSHOP WITH LUNCH

TUESDAY, SEPTEMBER 17 • 12:00 PM – 1:30 PM

MEMBERS \$30 / NON-MEMBERS \$40

Mason Quiram, District Program Director for Oldham County Conservation District, will lead our discussion on the science of composting and how you can get started. He will also share details on how Oldham County residents can take home a Geobin and get started with their composting right away. Attendees outside of Oldham County can still benefit from learning about composting.

Ticket includes the lecture plus lunch with sandwich buffet from Martha Lee's Kitchen, plus time to enjoy the gardens.

ECOLOGICAL GARDENING

THURSDAY, SEPTEMBER 26 • 6:00 PM – 7:30 PM

MEMBERS \$15 / NON-MEMBERS \$25

Mary Wheatley, Jefferson County Master Gardener, leads this workshop on the importance of ecological gardening to support the native environment. She'll discuss host plants, seed saving techniques, and the need to include some "messiness" in our gardens over winter to support birds and the eggs of good bugs that are surviving on our leaf litter.



SUNDAY DROP-IN PLANT WALKS

SUNDAYS THROUGHOUT OUR REGULAR SEASON • 1:00 PM

INCLUDED WITH ADMISSION

Join our horticulture team for a lively walk-and-talk about what's going on in the garden. This is a great opportunity to pick up new ideas for your own garden, ask questions, and see the gardens through the eyes of the staff members who keep it all in tip-top shape.

CLASSES AND EVENTS CONT'D



SAVE THE DATE: FALL PLANT SALE

SUNDAY, SEPTEMBER 29 • 12:00 PM – 4:00 PM

INCLUDED WITH ADMISSION

Mark your calendar for our annual Fall Plant Sale. Thanks to our sponsor, the LG&E and KU Foundation, we will be rolling out some of the best plants in the region for sale. Learn why autumn is a great time to make additions to your garden!

THANK YOU TO OUR SPONSOR



SUMMER MUSIC EVENTS

We have two opportunities to enjoy live music this summer at Yew Dell. Visit our website for availability and information to plan for your visit.

BOURBON & BOTANICALS

THURSDAYS, JULY 11 THROUGH AUGUST 29

DOORS OPEN AT 5:30PM • GARDEN TOUR BEGINS AT 6:00PM •

LIVE MUSIC BEGINS AT 7:00PM

This wildly popular event is back for 2024; and, with a brand-new performer line-up, our ever-popular garden walks, great food and drink, and the incomparable setting, this is destined to be another record year.

MORE INFORMATION: YEWDELLGARDENS.ORG/BOURBON-BOTANICALS/

OLDHAMFEST: BLUEGRASS EDITION

SATURDAY, JULY 20 • 12:00 PM – 10:00 PM

We're starting a brand new event with our friends at 3rd Turn Oldham Gardens to offer a day of fantastic music, a wide variety of foods, 3rd Turn's fantastic brews, educational offerings, and a whole lot more, while surrounded by the beauty of the gardens and woodland trails.

MORE INFORMATION: YEWDELLGARDENS.ORG/EVENT/OLDHAMFEST2024/

CHILDREN'S ACTIVITIES

CHILDREN IN THE DELL

SATURDAYS, JUNE 1 THROUGH JULY 27 • 10:30 AM – 12:00 PM

INCLUDED WITH ADMISSION

Join us each Saturday in June and July for these drop-in sessions that will focus on children's garden-themed books and hands-on activities for an informal education experience. We look forward to seeing kids and their adults get excited about plants and nature each week.

- Drop-in activity is included with admission
- Different books will be used throughout the summer, so come often

CULTURAL PASS

JUNE 5 THROUGH AUGUST 2

EVERY WEDNESDAY AND FIRST FRIDAY OF THE MONTH

Cultural Pass families can enjoy our gorgeous gardens this summer! We have a variety of scavenger hunts to get you out and exploring.

Passes can be picked up at:

- Louisville Free Public Library
- Bullitt County Public Library
- Jeffersonville Township Public Library
- Charlestown-Clark County Public Library
- Floyd County Library
- Harrison County Public Library



Busting

Plant Myths

Exploring fact vs fiction in the native/exotic debate

By: Dr. Paul Cappiello

If you've seen it once, you've seen it a thousand places – the well-intended push to manage invasive species has grown into a monster of misinformation that often targets exotic plants. We've lost count the number of posts advocating for native-only gardening. And there are certainly instances where planting locally native plants makes sense – habitat restoration ranks high on that list. But there are endless myths surrounding native and exotic plants. These are myths that need busting. Here are a few of our favorites:

Myth #1–Native vs ornamental

Nativity describes the geographic origin of a plant's genetic complement. Nativity has nothing to do with whether or not a plant is considered attractive – ornamental. Those who hold to this false distinction seem to imply that native plants cannot be ornamental. Tell that to a flowering dogwood! Plants native to Kentucky, Oklahoma, Japan, and Australia can be equally ornamental. **If there's a valid distinction to be made here, it's native vs exotic.**

Myth #2–Cultivars are not native plants

A cultivar is a cultivated variety of a particular plant species. 'Cloud 9' is a cultivar of the native flowering dogwood that happens to show better-than-average flower production. It is a selection of a species that is native to North America. Just because someone recognized one individual as having superior horticultural traits, that doesn't change the evolutionary history of that collection of genes.

Myth #3–Local pollinators can't live without locally native plants

Whether it's food crops or ornamental plants in a home garden (ok ... another false dichotomy!), research is pretty straightforward on this one. There seems to be no uniform preference of insects for locally native plant nectar or pollen – or even for forage and shelter. Of course, there are some highly-specialized plant/pollinator relationships (see Darwin's orchid/pollinator writings), but those are in the tiny minority. **Insects, it seems, are equal opportunity exploiters** of whatever plants they can find.

Myth #4–Cultivars are useless to native insects

This one's easy. Almost without exception, well-run research has shown that in many cases, cultivar selections made for enhanced ornamental features, are very often **more** effective pollinator servicers than are their wild-type cousins. Often this comes down to heavier flower or fragrance production in cultivated selections. Our solution to this often-misguided debate ... just plant more plants. The insects will appreciate it!

Castle Gardens Update



Following an April groundbreaking, our general contractor, E-Z Construction, is at full tilt on demolition, laying the groundwork for a stunning new garden. The construction fence is up and paths have been set for visitors to enjoy the gardens outside of the restricted area.



Yew Dell executive director Dr. Paul Cappiello, project designer from Land Morphology Richard Hartlage, co-chair of the Castle Gardens Capital Campaign Margie Schubert, Yew Dell board president Rob Nunnelley, E-Z Construction business development director Fran Curry, and Oldham County chamber president David Bizianes at April 17 ground breaking ceremony.

We'll be under construction through 2024 so this is a great time to come out and see what's happening. ***Pro tip – lunch at Martha Lee's Kitchen on the upper pavilion is a great way to keep an eye on everything that's going on!***

We've crossed the \$4.5 million mark in our fundraising and are in the home stretch. With less than \$500,000 left to raise, and a \$200,000 challenge grant on the table, **this is the time to get involved.** Every gift helps!

To take part in this exciting project contact us at **502-241-4788** or **Development@YewDellGardens.org**



Scan this QR code for more information – including construction updates!

Meet our new staff!



Megan Wallace
Office Manager



Rhianon Cruz
Garden Assistant



Beth Seibert
Event Coordinator

Help us welcome the newest additions to the Yew Dell family.

The new Castle Garden isn't the only project our team has been working on. Yew Dell Botanical Gardens is in the midst of a transformation ***across the grounds.***



With support of a generous Yew Dell friend, we were able to remove the old and dilapidated "old shade house" and replace it with a **new greenhouse** in the past year. Our nursery staff and volunteers began placing annuals in it this spring and we quickly saw the impact of the new building's features. If you shopped in our online Plant Market or one of our plant sales this year, you likely saw how healthy and strong these plants are!

Our floral arrangements were so successful last year that we expanded our **cut flower production garden** this year to the area that used to be our on-site plant market. Our staff also began a floral arrangement subscription program that quickly sold out. We're excited to say you can still find arrangements for sale at the Garden Gift Shop.



The Castle Gardens Project initiated several other projects for our garden staff. With construction threatening some important plant specimens, we relocated them to other parts of the gardens which turned into a ripple effect of **new garden spaces!** We can't wait for visitors to see these changes. Be sure to look near the Klein house, log cabin, and lower pavilion.



Much like the gardens, Yew Dell is quickly growing and we're grateful for our supporters who have chosen to take this journey with us. If you'd like to follow all the changes happening at Yew Dell, be sure to sign up for our **Garden eNews.**






NOTES FROM THE GARDEN

BY SAYDE HECKMAN

“Botanical Garden” is defined as “an establishment where plants are grown for display to the public and often for scientific study” by Oxford’s English dictionaries. At Yew Dell, we pride ourselves on providing our visitors with an accessible garden, displaying a large variety of plant specimens, and providing informational signage for each. It is our utmost goal to provide a space for people to learn about horticulture, so they can put that knowledge to work in their home gardens.


As a place full of Plant Nerds, there are two things we will always do. One, we’ll try anything that isn’t invasive at least once! Our staff are always on the lookout for the coolest new spring ephemeral, spring bulb, or flowering shrub. On the other hand, we love utilizing those tried and true plants that have stood the test of time, whether from North America, Europe, Japan, China, or Kentucky. Two, if the plant can’t take the fast-paced life of a hot, cold, humid, bizarre, strange, up-and-down, Kentucky year, then it’s got to go. . . to the compost pile in the sky, that is. **Kentucky deserves cool plants that love to live here as much as we do**, so our horticulturists are here to find them.

Since all gardeners have their own style and approach to the garden, we manage several different types of plant collections. So, no matter your own style or favorite season, you can take some new ideas to try at home.




Temporary Collections: These are seasonal, lasting either spring, summer, or fall.

- Big Bloom: March – April, 20,000+ Tulip, Hyacinth, Daffodil, and other bulbs
- Summer Tropicals: May – October, 3,000+ annuals
- Fall Planters: August – October, 30+ bourbon barrel planters with a fall planting
- Winter Displays: November – December, horticultural-themed interiorscapes



Permanent Collection: These are planted with the intention to be permanent.

- Display Gardens: the core of Yew Dell, made up of plants from all over the world
- Arboretum: 8 acres of specimen trees and shrubs, home to 400+ specimens
- Pollinator Meadow: seeded with locally collected seed by Dropseed Nursery
- Woodlands: once a pasture, now a regrowth woodland with hiking trails



Evaluation Gardens: We collect every available variety of a particular plant and plant them side-by-side for multi-year performance comparison.

- Perennial: currently includes selections of *Perovskia* (Russian Sage), Veronica, Hibiscus, and *Kniphofia* (Red Hot Poker)
- Shrub: currently includes Hydrangeas, *Buddleja davidii* (Butterfly Bush), *Calycanthus floridus* (Sweet Shrub), and more

There are many other ways we could break down the gardens at Yew Dell, but for simplicity this gives you a look into how we can alter your experience in the garden depending on what you want to learn.

Twilight in the Garden

Friday, September 20
6:00 PM • \$200/Person

Save the date for Yew Dell's signature event. Subscribe to our Garden eNews to receive information, including tickets sale and auction items later this summer.

Get involved by contacting our Director of Development at tjs@yewdellgardens.org



Have you been to Martha Lee's for lunch?

When we decided to open a café at Yew Dell it didn't take long to come up with a name. Theodore and Martha Lee Klein raised their children, operated a farm and nursery, and created the landscape that became Yew Dell Botanical Gardens. While Theodore's domain was out on the land, Martha Lee ruled in the kitchen. Our on-site café has taken inspiration from Martha Lee's recipes, her cooking from the garden, and from the love that made each meal a celebration of the garden. Next time you're on the grounds, plan to stop by for a Klein-family-inspired treat or something original from our creative chefs. Or even better, plan a special trip just for the food . . . and the view!



LIMBWALKER

Louisville's Urban Forest Experts

ORGANIC LAWNS

PLANT HEALTH CARE

MOSQUITO CONTROL

TREE CARE

MAKE YOUR BUSINESS BLOOM

WE SOLVE YOUR MARKETING CHALLENGES THROUGH THE POWER OF GREAT DESIGN



INgrid
Design

Brand + Marketing
Creative Solutions

ingriddesign.com
502.473.7270

NOTES FROM THE NURSERY

BY JEFF MARGREITER

Below is a **small** glimpse into the extraordinary diversity of plants, both native and non-native, that we grow in the nursery – and why we love to plant and garden with both!

Ferns provide excellent contrast to a flower or tree-heavy garden and come in a variety of size, form, and color.



Polystichum acrostichoides (Christmas Fern)

Native Species:

- *Onoclea sensibilis* (Sensitive Fern)
- *Polystichum acrostichoides* (Christmas Fern)
- *Adiantum pedatum* (Northern Maidenhair Fern)



Athyrium niponicum var. *pictum* (Japanese Painted Fern)

Non-native Species:

- *Athyrium niponicum* var. *pictum* (Japanese Painted Fern)
- *Dryopteris erythrosora* (Autumn Fern)

With flowering plants making up more than 80% of all terrestrial plant species, there are plenty of choices out there for **Flowering Perennials** in any yard or garden. Take the Aster (or Composite) group – one of the largest and most diverse collections of plants in the world.



Symphiotrichum leave 'Bluebird' (Smooth Aster)

Native Species:

- *Eurybia divaricata* (White Wood Aster)
- *Symphiotrichum* leave 'Bluebird' (Smooth Aster)
- *Stokesia laevis* (Stoke's Aster)



Aster tartaricus 'Jindai' (Tartarian Aster)

Non-native Species:

- *Aster tartaricus* 'Jindai' (Tartarian Aster)

We are always looking for great plants to grow for our gardens and yours, whether it be one of the many amazing native plants that just hasn't received the attention it deserves or a well behaved exotic species that might catch a new gardener's eye and lead them down a path of plant addiction!

Busting Fertilizer

Plant Myths

How many times have we heard, "growing plants without fertilizer toughens them up prior to planting in the garden." Phooey!

We don't know where this myth came from, but we wish it would die a quiet death! There's about 10,000 years of practical experience that is clear. Well nourished, healthy plants establish much better than plants that have been starved during production.

Here's a parallel to make the point. You're planning to leave your desk job and hike the Appalachian Trail. You have two choices on how to prepare over the next 6 months:

Option 1 – start an exercise program and change your diet to make sure you are getting plenty of protein and nutrients to help you build conditioning.

Option 2 – eat one Twinkie a day for the next 180 days.

Any questions?

VOLUNTEER HIGHLIGHTS

VOLUNTEER CELEBRATION



From gardening to decor to administration- our volunteers are magical! In March, we gathered for our annual volunteer celebration to reflect on an amazing year. We also recognized our "of the years," whose efforts were above and beyond the call of duty. Please join us in thanking our volunteers for all their dedication!

VOLUNTEERS OF THE YEAR



Entrance Garden
Adoption Group



Maria Margulis



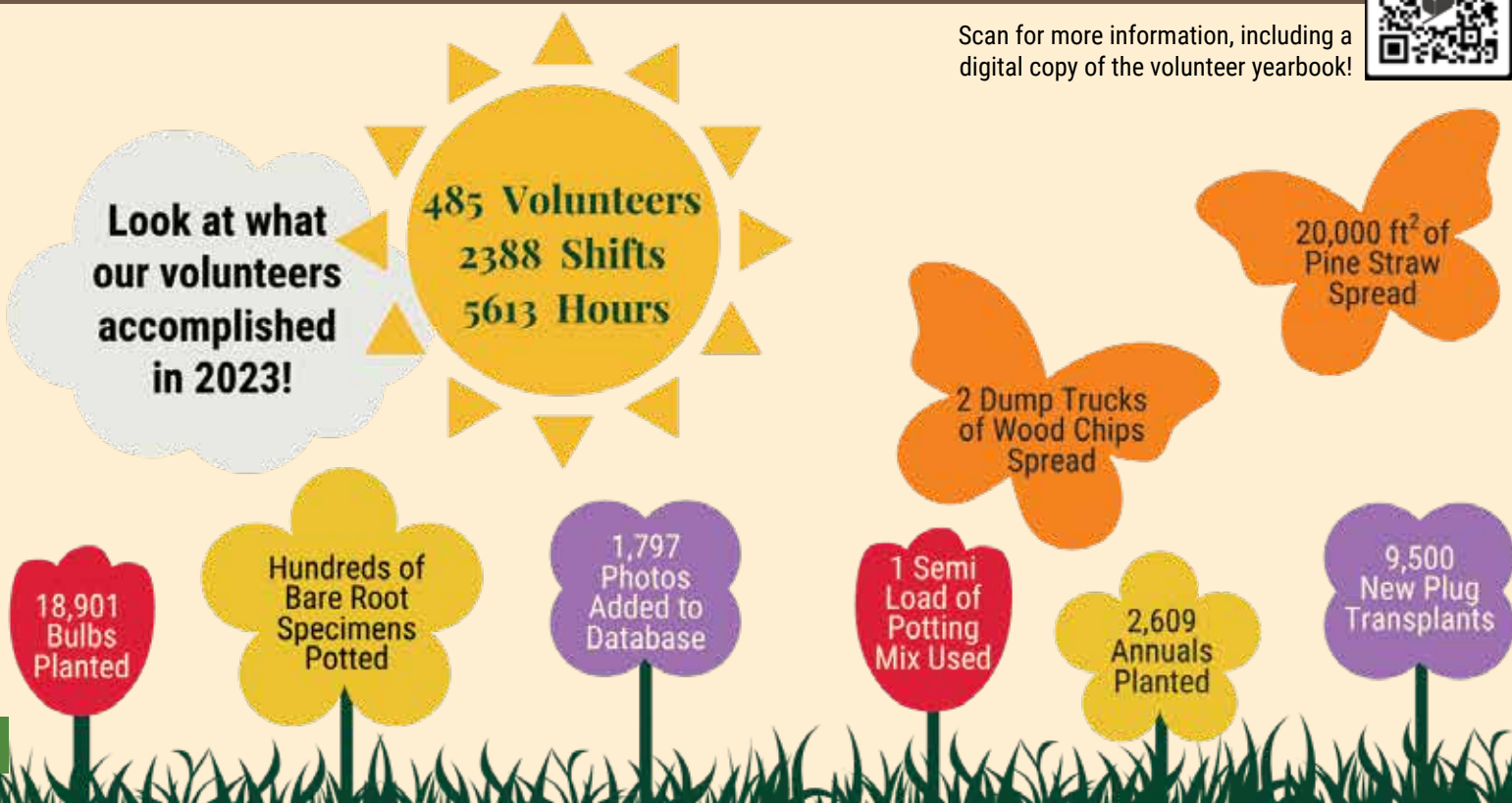
Abby Potter



Jim Gerdes



Scan for more information, including a digital copy of the volunteer yearbook!





Planned Giving – where do I start?

Estate planning, planned giving, legacy gifts... It can be hard to know where to start. But as they say, the best time to plant a tree was 30 years ago. The second-best time is **today**. Same goes with planned giving. Planned gifts can offer tremendous tax advantages to the donor and can support Yew Dell's mission work now and well into the future.

Planned gifts come in many different forms and can include gifts from your will or trust, gifts of stock and appreciated assets, life insurance, gifts of personal property, real estate, retirement plans, and gifts to donor-advised funds. Gifts that pay income, such as charitable annuities, can also be great options for donors looking to support Yew Dell while continuing to receive financial benefits from their assets during the donor's lifetime.

If you're interested in learning more about how a planned gift to Yew Dell could fit into your overall estate plan, give us a call or join us for a special informative discussion with our good friends at **Stock Yards Bank & Trust**. We'll have a refreshment or two, talk planned giving, and maybe even go for an evening stroll around the gardens.

Planned Giving with Yew Dell and Stock Yards Bank & Trust
Tuesday, August 13 · 6:00pm
RSVP to TJ Slaughter by emailing tjs@yewdellgardens.org



We're proud to be here for all your tree care and plant health care needs.

Visit our website **bobrayco.com** or call us at **502-425-7654**.



6220 Old Lagrange Road
Crestwood, Kentucky 40014
yewdellgardens.org

NON PROFIT ORG
U.S. POSTAGE
PAID
Louisville, KY
PERMIT #879



Yew Dell Botanical Gardens is a partnership project of the Garden Conservancy,
a national, non-profit organization founded to help preserve America's exceptional gardens.
Copyright 2024

SPECIAL THANKS TO: UNITED DIRECT SOLUTIONS MAIL, INC.

Midsummer is one of our favorite times in the Visitor Center, with lots of plants to discover and just as many containers, chimes, and unique yard art to complement them.

It is also the time our bees introduce their fresh honey for the 2024 season.
So, **honey will be available in our shop around July 1.** Also please
remember to bring in your empty jars to recycle.
This enables us to keep our cost down and
avoid using plastic.



Follow Us On Social Media
[@YewDellGardens.org](https://www.YewDellGardens.org)

