

FALL

2023



YEW
DELL
BOTANICAL
GARDENS™

**“THE TRUE MEANING OF LIFE IS TO PLANT
TREES, UNDER WHOSE SHADE YOU DO NOT
EXPECT TO SIT.”**

-NELSON HENDERSON



EXECUTIVE DIRECTOR'S LETTER

Legacy... whether you plant a tree, share a skill, or build a botanical garden, it's a Legacy that you are leaving behind, passing along, and crafting for future generations. In our organizational mission we describe it as *sparkling a passion* – in whatever way and at whatever level makes sense for you.

Throughout all of 2023, we've focused our messaging on bringing the garden home, bringing it inside – inviting the garden into your everyday life. And what better way to close out the year than by talking about how to share your love of gardening with or bring the garden into the lives of others. The simple, selfless act of planting a tree... The simple, selfless act of sharing your passion...

Sprinkled through the following pages you'll come across countless examples of so many across our community sharing their talents, sparking a passion, and creating a legacy. From our locally and nationally recognized staff to amazing volunteers, committed members, and generous donors, there is a legacy coalescing across Yew Dell that was put in motion so long ago by Theodore and Martha Lee Klein and their family who built the foundation – the Legacy – that supports our work.

As we move through the fall and into the year-end holiday season, I ask you to think about your own passion for this place,

whether you've been involved from day one or you're new to Yew Dell. Giving the gift of membership to a friend or family member – bumping up your own membership level to support Yew Dell's mission work – committing to volunteer more, giving a year-end donation, supporting the Castle Gardens Campaign, or getting in touch about a planned, estate gift – there are so many ways you can play a part in building a Legacy that will serve our community for many, many years to come.

Paul Cappiella





FALL PLANT SALE

SUNDAY, OCTOBER 1 • 12:00 – 4:00 PM

INCLUDED WITH ADMISSION

Bring your boxes and wagons and load up on fantastic fall plants! Thanks to our sponsor, the LG&E and KU Foundation, we are again rolling out some of the best plants in the region for this sale. We'll feature plants that are not yet available through the Online Plant Market or On-site Plant Market. Once these beauties are snapped up, we may not have any more available in the short term.

THANK YOU TO OUR SPONSOR



Foundation

LET'S GET GROWING SERIES

Join Emma Stidham, mom, wife, and horticulturist with more than 15 years of experience in vegetable gardening, public gardens, and retail sales, as we complete our Vegetable Garden Planning series. Each quarter focused on timely topics to get your garden from start to finish.



FALL SESSION: VEGETABLE GARDEN PLANNING GUIDE

SATURDAY, OCTOBER 14 • 10:30 AM – 12:00 PM

MEMBER \$40 / NON-MEMBER \$50

For Fall, we'll wrap-up with garden clean-up and preparation for next season, cover/winter crops, and an overall garden recap.

Although this is part of a series, it is also a stand-alone workshop. You do not need information from the previous sessions to get great ideas from this one. And, if you attended all four sessions, we'll reward your dedication with a plant from our gardens after this workshop!

Follow us on social media:
[@yewdellgardens](#)



TREE WEEK PROGRAMS

We are proud to once again partner in this year's #LouisvilleTreeWeek by providing workshops that celebrate the incredible ways trees provide for us. From educational walks to artistic activities – you will be amazed by what you learn from our staff and community partners.



TREE IDENTIFICATION WALK

SATURDAY, OCTOBER 7, 2023 • 2:00 – 3:00 PM

INCLUDED WITH ADMISSION

Join us for a hike along our Woodland Trails to learn some basic tree identification skills. Guests will take an easy hike while our top-notch team explains details about leaves, twigs, bark, and other features useful to identifying trees.

CULTIVATING URBAN ORCHARDS AND GARDENS – VIRTUAL*

THURSDAY, OCTOBER 12 • 6:00 – 7:30 PM

MEMBER \$25 / NON-MEMBER \$35

You don't have to leave the city to farm and have trees. In this virtual workshop, University of Louisville PhD Biology student Julia Kachanova will discuss cultivating urban orchards and food-producing plants in urban settings. Discover practical strategies for establishing and nurturing these green spaces, even with limited resources. Whether you're a seasoned gardener or just starting out, this lecture will empower you to create bountiful yields in your very own urban oasis.

** Zoom login will be sent before the session. As this is a virtual workshop, friends and family can watch together under one login.*



FALL TREES WATERCOLOR PAINTING

SUNDAY, OCTOBER 15 • 12:00 – 2:00 PM

MEMBER \$60 / NON-MEMBER \$70

Hanna Barnhart, owner of Owen & Mae at Mellwood Art Center and presenter of our Spring Floral Watercolor Painting workshop, returns with a session focused on painting trees. Participants will learn the basics of watercolor painting and how to apply it to create a beautiful tree painting that you can be proud of. Explore your love of nature and expand your creativity in this two-hour beginner friendly class all while enjoying the beautiful sights of Yew Dell Botanical Gardens.



To register and for more information, go to www.yewdellgardens.org/classes-events

All listed programs are tentatively scheduled to be in-person unless otherwise indicated.

CLASSES AND EVENTS

SCULPTURE IN THE GARDEN, AN EVENING WITH DAVE CAUDILL

THURSDAY, OCTOBER 19 • 6:00 – 8:30PM
MEMBER AND NON-MEMBER \$45

Join Louisville sculptor, Dave Caudill, for an evening designed to help you plan, select, and place sculptures in your garden. Enjoy a glass of wine and a few appetizers as Dave starts the evening with a presentation in the Gheens Barn to get you thinking. Then, Dave and Yew Dell executive director, Paul Cappiello, will lead a walk around the grounds to see installations of Dave's sculpture in a variety of spaces and discuss placement, presentation, and logistics. And of course you'll have a chance to purchase and take a piece home for your own garden.



CONTAINER BULB WORKSHOP

SATURDAY, OCTOBER 21 • 10:30 AM – 12:00 PM
MEMBER \$75 / NON-MEMBER \$85

Join our Horticulture Staff for a hands-on opportunity to create your own bulb "lasagna" with layered blooms that will emerge in the spring. Price includes daffodils, grape hyacinth, and tulip bulbs, planting medium, vessel, and directions on overwintering your bulbs.

BAD SCI-FI MOVIES AND REAL PLANT SCIENCE: THE THING FROM ANOTHER WORLD (1951)

FRIDAY, NOVEMBER 3 • DOORS OPEN AT 6:00 PM • MOVIE STARTS AT 7:00 PM
MEMBERS \$20 / NON-MEMBERS \$25

Our film series – Bad Sci-Fi Movies and Real Plant Science – wraps up for the year with *The Thing from Another World* (1951). After watching this film, learn from our Horticulture Team about carnivorous plants, cellular structure for vegetable matter and animals, and what telegraph vine and century plants do in the real world. Bring your best "would plants really do that?" questions for our Team to answer.



HOLIDAY WREATH MAKING WORKSHOPS

SATURDAY, DECEMBER 2 • 10:00 AM – 12:00 PM AND 2:00 – 4:00 PM
SATURDAY, DECEMBER 9 • 10:00 AM – 12:00 PM AND 2:00 – 4:00 PM
SATURDAY, DECEMBER 16 • 10:00 AM – 12:00 PM AND 2:00 – 4:00 PM
MEMBERS \$75 / NON-MEMBERS \$85

Our Yew Dell family classic returns for another holiday season, with a third weekend added to try to meet demand. Select the morning or afternoon shift to make a custom holiday wreath with fresh greens and décor items. These workshops fill up quickly, so don't miss out!

Boo Dell! at Yew Dell

BOO DELL!

SUNDAY, OCTOBER 29 • 12:00 – 4:00 PM
INCLUDED WITH ADMISSION

Thanks to Sponsors LG&E and KU Foundation, Liberty Federal Credit Union, and Dean Dorton, Boo Dell is back for another year of family-focused fun! Our famous Trail of Treats will once again delight guests, plus we have activities with our Horticulture Team, live music, and other surprises for the whole family in a non-scary environment. Boo Dell is included with admission; tickets can be purchased at arrival.





YULETIDE 2022

FRIDAYS AND SATURDAYS - NOVEMBER 24 & 25, DECEMBER 1 & 2, DECEMBER 8 & 9, DECEMBER 15 & 16

TWO TIME SHIFTS PER NIGHT: 5:00 - 7:00 PM AND 7:00 - 9:00 PM

MEMBERS: ADULTS \$9 / SENIORS & CHILDREN \$5 / CHILDREN 5 AND UNDER FREE BUT STILL REQUIRE A TICKET

GENERAL ADMISSION: ADULTS \$12 / SENIORS & CHILDREN \$7 / CHILDREN 5 AND UNDER FREE BUT STILL REQUIRE A TICKET

Yuletide 2023 returns with a focus on traditional family fun with a whimsical train village, sparkling lights and décor, Holiday Trees, food and beverage options, a takeaway craft, and Santa! Advance tickets recommended with limited walk-up availability each night.



LIMBWALKER

Louisville's Urban Forest Experts

ORGANIC LAWN

PLANT HEALTH CARE

MOSQUITO CONTROL

TREE CARE

NOTES FROM THE GARDENS

BY SAYDE HECKMAN

Gardening is the ultimate hobby, one able to morph depending on our personal interests. At Yew Dell, we are constantly evolving and incorporating new techniques in hopes to inspire our visitors, volunteers, and staff to try new things and dig a little deeper. Whether you're a painter, chef, teacher, or real estate agent, there is something this hobby can do for you and Yew Dell is here to help you along the way.

Each year our team of horticulturists and volunteers incorporate a variety of seasonal displays throughout the gardens. These displays are different each season, range in scale, and offer great inspiration for local gardeners. From masses of tulips to funky miniature watermelons, we've tried it all. And most importantly, we try to incorporate plants into just about every event and program that we do.

One of our favorite things to do is showing people how gardening doesn't have to halt once the weather cools and the plants go dormant - nor does it have to be a dirty job outside all the time! This is when getting crafty with plants comes in. You can see this throughout the gardens this Fall as we transition our Yuletide décor into a full-on, botanical holiday theme!

We've spent the growing season collecting blooms from the gardens - some of which were then pressed.

You can try this at home by:

- Folding a piece of paper in half
- Placing the flower or leaves inside
- Tucking flower or leaves and folded paper into a book
- Closing the book & resting a heavy item on it
- Let it set for 2-4 weeks, until fully dry

We incorporated those dried, pressed flowers by making ornaments for Yuletide.

You can try it too by using silicone molds and casting resin from your local craft store.

**Pro tip: set aside some space because it will require some time to dry between the two layers and at the end.*

This is just one of many, many ways to use plants in your crafts.

Some other ideas are:

- Wooden pens
- Nature weavings
- Grass baskets
- Grapevine wreaths
- And many more - you're only limited by your imagination!



MEET YEW DELL'S NEW STAFF!



JEFF MARGREITER
NURSERY & GREENHOUSE MANAGER



ALISON KURNIK
EVENT STAFF

Meet our newest additions to the Yew Dell family.

Plan to join us for Yuletide this holiday season to enjoy the décor and take home a few ideas for your own botanical holiday in the future!

GENEROUS BENEFACTOR LEAVES TRANSFORMATIONAL ESTATE GIFT TO YEW DELL

Sometimes an out-of-the-blue phone call from an attorney brings good news!

That was the case earlier this year when we received a call from the attorney of a longtime Yew Dell member and supporter. It turns out that this member had left an estate gift to Yew Dell – and not a little gift. When all the paperwork is complete, the fund to be held in trust for the benefit of Yew Dell is likely to total in the neighborhood of \$8 million! And while at it, the same donor set up a separate trust to support Waterfront Botanical Gardens.

With a 5% annual distribution to Yew Dell, the trust will have a tremendous ongoing impact on Yew Dell's growth and development into the future.

But a gift like this doesn't typically come out of nowhere. The person responsible for this transformative gift had a long history with Yew Dell going back to enthusiastically signing on as one of the first members of the brand-new Yew Dell Botanical Gardens, back when it had tons of potential but not so much product. Over the years, a great deal of planning, much forethought, and a whole lot of passion led to an act of generosity that will impact this community well into the future.



But beyond a passion for gardens and gardening, this donor had a personal, you might say transformational experience that planted the seed of what became Yew Dell's largest gift. Many years ago, this future benefactor attended a garden club meeting where the speaker was a "dashing, kind, and knowledgeable gentleman who was generous with his knowledge and his plants and passionate about his work of collecting, growing, and selling great plants". The name of that dashing figure who set this eventual donor on a lifelong path of garden passion and philanthropy ... Theodore Klein himself!

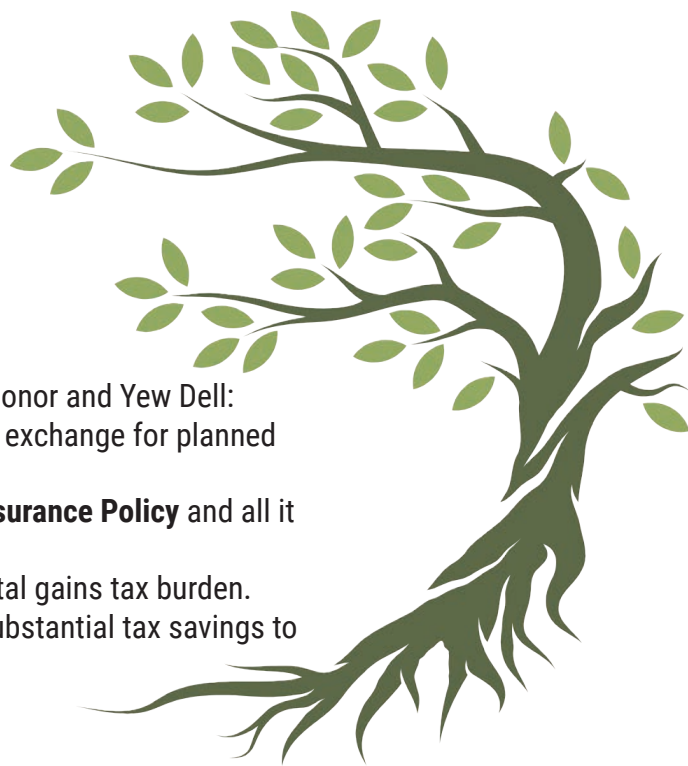
How's that for a Legacy!

"The biggest planned giving mistake most people make is thinking that an estate plan is only for the wealthy." - Anonymous

Leaving a Legacy gift is a wonderful way to make a lasting impact and get the most out of your estate plan now and into the future. All a little overwhelming? The good news is that there is plenty of help out there. If you'd like to be part of Yew Dell's Legacy but don't know where to start, we're happy to help connect you with professionals who can help you create a plan. Give us a call or drop us an email.

A few examples of estate gifts that can create a win/win for donor and Yew Dell:

- **Charitable Remainder Trusts** offer some tax benefits now in exchange for planned charitable gifts in the future.
- You can designate Yew Dell as a **Beneficiary on your Life Insurance Policy** and all it takes is a simple form from your insurer.
- **Donation of Appreciated Stock** can help to reduce your capital gains tax burden.
- **Contribution Directly From Your IRA** to Yew Dell can offer substantial tax savings to donors who meet certain eligibility requirements.



Mission Moments

Yew Dell Botanical Garden is often celebrated for plants – after all, our mission is based on inspiring a passion for plants and gardening through accessible science and inspiring beauty. But that is only half of our purpose. The other half is our **community**.

For those who have recently found Yew Dell, it was previously the home, farm, and commercial nursery of Theodore Klein and his family. Through the mid-1900s, Theodore and his family turned the property into a botanical treasure with an incredible collection of plants from around the world. He also designed and built several of the structures that remain on the grounds using pieces of Oldham County history in the process! When he passed away, this hub of gardening knowledge as well as historically significant plants and structures was slated for development. It was forward-looking members of our community that saw its importance and created a nonprofit to save it.

Our relationship with our community started more than 20 years ago and continues as we provide opportunities for anyone to enjoy:

- Families making memories during our Boo Dell and Yuletide events
- Kids connecting with nature – whether through Children in the Dell or a hike along our Woodland trails
- Someone starting their plant obsession through one of our workshops
- Uber garden geeks finding new/rare plants in our gardens and for sale in our Plant Market
- Friends catching up over lunch with a view at Martha Lee's Kitchen
- Fans enjoying a performance of their favorite band during Bourbon & Botanicals

Throughout this time, we've also built relationships with other plant enthusiasts. Our communities and our gardens both thrive by sharing collective knowledge and love of plants:

- Our lectures come from partnerships with local researchers, cooperative extension agents, experts, and more!
- Our staff participates in local, regional, and national horticulture associations
- Our volunteers provide a wealth of knowledge and share new, creative ways to garden

Our organization is lucky to have such a passionate community as our foundation. Your support enables us to continue our work to foster excitement for gardening and nature.

Castle Gardens Campaign Update



With nearly \$4 million committed from generous donors across the community, we're gearing up for a Spring 2024 groundbreaking and Fall completion of our new garden project that has raised eyebrows and generated conversation from coast to coast. Just a few final design details to be sorted out and the stage will be set.

And one of those final details is a fun piece that will put this project over the top.

Working with our design team at Land Morphology, we're working on a few designs for Yew Dell logo, custom terra cotta containers to grace the new gardens. They'll add an amazing touch of custom detail, provide our horticulture staff a canvas for some stunning seasonal planting details... and as you may have guessed, adds one more naming opportunity to help us hit our goal. If you're interested in helping us add this wonderful detail to the Castle Gardens, please contact us. We'd love to talk with you!

To take part in this exciting project, scan the QR code or contact us at **502-241-4788**



JOINING YEW DELL AS THE NEW NURSERY & GREENHOUSE MANAGER

I have always been thrilled with the diversity of plants, whether that be genetic or aesthetic diversity, so I was thrilled to see such a great variety of trees, shrubs, and herbaceous plants when I first arrived at Yew Dell as the new Nursery and Greenhouse Manager. Upon being introduced to the hoop houses, plant market, and greenhouse that make up my area of responsibility, I was eager to start learning all the common and botanical names of every plant. There's a few new plants at Yew Dell for a guy moving here from Auburn, Alabama!



The first matter of business in the nursery was the organization of the plant material. Moving plants around to hoop houses that suited their light requirements was key. Grouping similar plants into sections such as vines, perennial wildflowers, grasses, etc., was also done to make their care easier and more systematic. We inventoried all the existing plant material just in time to receive thousands of new plugs.



The small plant plugs we ordered are in the process of being transplanted to larger pots with the appropriate soil for their pot size, having granular fertilizer added, and given a healthy dose of water. We can't wait for you to see all the new plants we have planned for some of our upcoming sales.

Of course completing all these tasks in a timely manner would be an overwhelming endeavor were it not for the help of my colleague in the nursery, Cosmo, and our many hardworking volunteers!

Jeff joined Yew Dell's staff at the end of May after receiving his undergraduate and masters degrees at Auburn University. He hit the ground running and has been busy in our plant production and research! Be sure to say hello next time you're visiting our plant market!



We're proud to be here for all your tree care and plant health care needs.

Visit our website bobrayco.com or call us at 502-425-7654.

One of the things we will be highlighting during our upcoming Fall Plant Sale is selling some plants as bare root transplants.



Bare root planting is not too commonplace for most home gardeners, but it can be a more sustainable, less labor-intensive alternative to conventional planting. At Yew Dell, bare root plants are those that our staff in the nursery have planted into a raised bed where they are allowed to grow for a few years. This allows us to completely eliminate the plastic pots and flats used in so much plant production. Bare root production eliminates the need to continually move plants up to a larger pot size. It also greatly reduces the amount of potting mix and fertilizer we use during production.

In the Fall, when the plants have stopped growing or may be close to dormancy, we are able to easily dig the plants from the soil bed, wash all the soil off the root system, wrap them in a thin paper material, and they are ready for sale!

The compact size of these bare root plants is extremely convenient for the gardener. In the fall, masses of bare root plants can be easily added to your garden and yard. Think of it as similar to the fall planting of bulbs. In fact, many of the bare root plants we currently grow do arise from bulbs or other tuberous organs – Jack-in-the-pulpit (*Arisaema* sp.), Gladiolus, and ornamental Ginger. Other plants grown for bare root production, like the Celandine Poppy, can be easily divided once their leaves start to die back.

If you are looking to add spring ephemerals to your garden, Autumn is the perfect time to plan out your botanical designs. Trilliums, Bloodroot, Anemone, Virginia Bluebells, among others – are also in our bare root bunker. These plants are known for their sudden bursts of abundance and color in early spring, benefiting from the sunlight that is readily available until the trees above leaf-out once more. Planting such bare root rhizomes or bulbs into the soil in the Fall gives them a head start prior to their spring emergence. Just make sure to plant spring ephemerals in a mostly shady area under deciduous trees (those whose leaves fall), not evergreens.



Sweet Betsy *Trillium cuneatum*



Farge's Cobra Lily *Arisaema fargesii*



Japanese Anemone *Anemone hupehensis* 'Pocahontas'



You can learn more about bare root planting and other gardening tips in our new nursery e-newsletter! Scan the QR code to sign up for monthly updates about our plant market, advice from our horticulture team, and of course – some really cool plants!

Martha Lee's Kitchen Has Expanded!



Martha Lee's Kitchen has had a big year with many exciting changes. We recently expanded our menu and hours and are excited to make your visit to Yew Dell even better with delicious hot food and cold drinks. And now you can even enjoy a cold beer or glass of wine with your meal! We love hearing all of the positive comments from our guests and we thank you for your patronage. Look out for our new Fall menu as we celebrate the change of the seasons!

Scan the QR Code to see what's on our menu!



STAFF HIGHLIGHTS

Part of our success is having a phenomenal team. Congratulations to our staff for their recent achievements!



HOLLY ROGERS
BEST IN FINANCE HONOREE
LOUISVILLE BUSINESS FIRST



JACOB STIDHAM
20 UNDER 40
OLDHAM ERA



SAYDE HECKMAN
2023 YOUNG PROFESSIONAL AWARD
PERENNIAL PLANT ASSOCIATION



PAUL CAPPIELLO
NONPROFIT VISIONARY LEADER HONOREE
LOUISVILLE BUSINESS FIRST

MAKE YOUR BUSINESS BLOOM

WE SOLVE YOUR MARKETING CHALLENGES
THROUGH THE POWER OF GREAT DESIGN



**INGrid
Design**

Brand + Marketing
Creative Solutions

ingriddesign.com
502.473.7270

GIVE THE GIFT OF MEMBERSHIP THIS HOLIDAY SEASON!

Surprise the special people in your life with a year of inspirational gardens, educational programs, and entertaining events.

Gift memberships will be mailed to the recipient at the address you provide. If you'd rather have us send it to you (for a little Christmas Eve stocking stuffer or Hanukkah gift) drop us an email and we'll send it to you instead.

Your gift membership purchase supports our mission to spark a passion for plants and gardening through accessible science and inspiring beauty.



Start your gift of membership today by scanning the QR code.

VOLUNTEER HIGHLIGHTS

YOUTHWORKS

This Summer, we continued our partnership with Youthworks, an organization that works with teenagers across the country to organize mission trips. On these trips, the group lives in the community they serve and spends a week volunteering at various organizations. These groups tackle every project with vigor and our staff appreciates their high energy!



12 CITIES

67 INDIVIDUALS

245 HOURS



GROUP VOLUNTEERS



We have such a supportive community, be it through membership, event attendance, donations, or volunteering! We recently had a variety of corporate groups donate time to improving our grounds. Thank you so much to Humana, The Rawlings Group, Insight Global, and GE Appliances!



GATHERING CLUB

This past winter, organizers at the Gathering Club, a local Adult Day Health Center, began visiting Yew Dell and immediately saw the benefits of being in nature. They asked about getting involved and now volunteer on a monthly basis. So far, they've helped with a variety of tasks from planting annuals to weeding to gathering materials for fall decorations to donating a fairy house! They are such a joy to work with and brighten the day with every visit.



"We love going to Yew Dell and helping. We were so excited to be accepted as volunteers and they always make us feel welcome. We learn things from Sadye that we wouldn't ever know. While we're there, we get to play in the dirt, plant flowers and vegetables, and pull weeds. Nature is fun to be in and it's nice to know that we can all help in some way making things pretty for people." - *Gathering Club*



Sign up for our Volunteer eNews to receive more information!

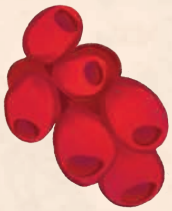


Connect the Tree Seeds

Where do trees come from? You've probably seen "tree seeds" like acorns while walking outside. Maybe you've seen tree seeds like coconuts at the grocery store. Or, you have seen tree seeds inside your apples. Take a closer look around and you'll see tree seeds in all sorts of shapes and sizes- as well as the vessel that carries them!

Take a look at these tree seeds found at Yew Dell, and match up the seed with the leaf from the mature tree. Which ones did we miss in our gardens? What other tree seeds have you seen?

Tree Seed



Tree Leaf

Yew



Maple



Oak



Sweetgum



Pine



As a reminder, please don't collect or take home anything you find on the ground, and please don't pick anything from the trees. We need all the tree seeds – and other natural materials – we can get!

Yew Dell Botanical Gardens is a partnership project of the Garden Conservancy, a national, nonprofit organization founded to help preserve America's exceptional gardens.

Copyright 2023



Special Thanks To: United Direct Solutions

Garden Gift Shop

Ready or not, the holidays are right around the corner. We are here to help, whether you need a special decoration or the perfect little gift. Need a suggestion? Just drop by or give us a call and the shop staff will help you put another checkmark on your list.

And remember a purchase from the Garden Gift Shop is always a great way to support our garden!



The Last Day
To Shop Is
December 17!