



YEW DELL BOTANICAL GARDENS

January • February • March 2018

Intersectional Peony Excitement! 6

Paul's Winter Reading List 7

Helleborus dumetorum

6220 OLD LAGRANGE ROAD • CRESTWOOD • KENTUCKY • 40014 • 502.241.4788 • YEWDELLGARDENS.ORG

LETTER FROM THE DIRECTOR

Winter makes its return...Time to plan for SPRING!

Old Man Winter's spell is a tough one to break if you're a dyed-in-the-wool gardener. Most of us can only handle just so much catalog browsing and tool sharpening before the itch to prune, plant, primp and prod turns us into something non-gardening family members would rather not meet. We all need more spring plants to think about this time of year. And fortunately, we have plenty of plant stuff to look forward to at Yew Dell.

One of the big changes visitors to the grounds will notice this coming season will be the goings on below the Castle. The existing 2.5 acre field (mostly populated with Johnsongrass and other nasties) will be expanded, killed off (to remove the invasives) and seeded next fall with a long list of native grasses and wildflowers. The species list was developed with Margaret Shea of Dropseed Nursery (Goshen, KY) to encourage and support a wide diversity of native pollinator species and to create a beautiful vista throughout the season. Funding from the Kentucky Waterways Alliance and the Oldham

County Community Foundation will help put into action a plan that we've had on the docket for a long time.

And come springtime we'll have a smashing new intersectional peony display to enjoy (see page 6).

Of course there's about a thousand other things planned for the year – new plant collections, spring bulb displays, lectures, workshops and dinners. So this would be a good time to make sure your membership is up to date . . . and to treat your family to a pre-emptive treat . . . before Old Man Winter does his worst!

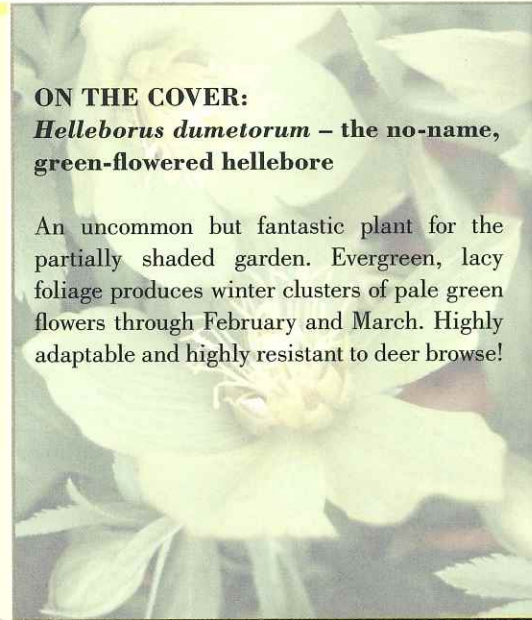
Happy Gardening...
Paul Cappiello
Executive Director

Do you Enjoy Reading This Newsletter?

If you thought to yourself ... yes, I do, then we are so pleased. But we have a favor to ask. Would you mind looking on the label to check your membership status? If you are a current member, thank you for your support! If not, we hope you will consider renewing your membership. We love our current and previous members and want you to stay informed. Yew Dell has been growing and to continue on that path we need your support. Thank you in advance for your support!

ON THE COVER:
Helleborus dumetorum – the no-name, green-flowered hellebore

An uncommon but fantastic plant for the partially shaded garden. Evergreen, lacy foliage produces winter clusters of pale green flowers through February and March. Highly adaptable and highly resistant to deer browse!



MEMBERSHIP FORM

LEVELS OF GIVING

- Individual **\$35**
- Family (*residing at the same address*) **\$50-\$149**
- Silver **\$150-\$499**
- Gold **\$500-\$999**
- The Dell Society **\$1,000- \$2,499**
- Director's Circle **\$2,500 and up**

Name _____

Address _____

City _____ State _____ Zip _____

Phone (____) _____

Email

AMEX VISA Mastercard Discover (CIRCLE ONE) Amount: \$ _____

Card Number: ---

Expiry Date: - (MM-YY) Security Code:

Signature _____

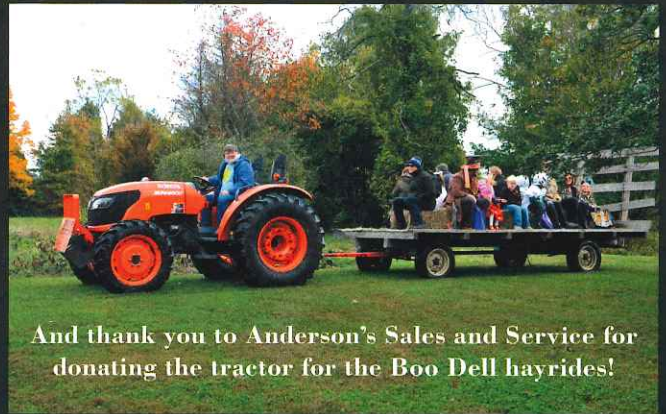
For a list of membership benefits and more information about events and programs, visit our website at www.yewdellgardens.org. Please return this form to:

Yew Dell Botanical Gardens
6220 Old LaGrange Road
Crestwood, KY 40014

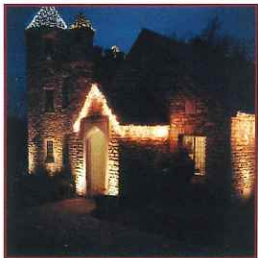
THANK YOU TO OUR SPONSORS!

Boo Dell!

at Yew Dell



And thank you to Anderson's Sales and Service for donating the tractor for the Boo Dell hayrides!



THANK YOU TO OUR YULETIDE
TITLE SPONSOR



Commonwealth
Bank & Trust Company
Member FDIC

A SPECIAL THANKS TO WILLIAMS-SONOMA, GREENHAVEN
TREE CARE, OUR WONDERFUL VOLUNTEERS AND EVERYONE
WHO CAME!

2018 Winter - Early Spring Events and Classes

Watch for emails and check our website for complete descriptions, program updates and additions.

MARCH



First Volunteer Workday of 2018!

Saturday, March 10; 9am-noon

Kick off the year in garden style by joining us for our first volunteer workday.

Travelogue Dinner – Awesome Plants and Nurseries of the Low Countries

Wednesday, March 14; 6:30-8:30pm

\$70/\$80 Members/Non-members

Belgium and Holland have long been synonymous with great interest in plants. From the 17th century tulipomania to today's head-spinning automated production, this region has long been a major player in the plant industry. Join us for this evening of plants, nurseries, gardens and lore . . . and a tasty dinner as well. Sign up quickly. These dinners sell out fast! Call 502-241-4788 for details and tickets or visit: yewdellgardens.org

Tool Sharpening Workshop with Robert Rollins

Thursday, March 22; 6-7:30pm

\$20/\$30 Members/Non-members

There's nothing more frustrating than lousy tools in the garden. Dull spades, floppy pruners and beat up hoes can turn even the most even-tempered gardener into an ogre. So pack up those rusty spades. Dig out those crusty pruners, jammed hedge shears and more and bring them to this hands-on session with the only person we know who's more passionate about garden tools than we are! We might even host an amnesty buy-back program for the most abused pruners in the crowd!

Volunteer Celebration

Saturday, March 24; 10-11:30am

Join us for this annual "Thank You" to all our volunteers from the past year. Light refreshments, volunteer awards, door prizes and an all-around great time. If you are interested in volunteering, this is a great time to meet other volunteers and to find out about volunteer opportunities.



Opening Saturday! (Formerly known as Hellebore Day)

Saturday, March 31; 10am-noon

Free with Regular Admission

Our opening weekend has traditionally been all about Hellebores. And while they will still be a primary focus, we've decided to expand our activities to include: the Hellebore sale, the opening of the Garden Gift Shop, spring plant tours (which will include Hellebores), a pruning work shop (see below), fairy garden fun and more. Come out and use some of that spring fever to check out or try something new!

Pruning Trees & Shrubs Workshop

**Instructor: Paul Capiello,
Yew Dell Executive Director**

Saturday, March 31; 1:30-3:30pm

\$15/\$25 - Members/Non-members

One of our most popular workshops every year! Come for opening weekend and stay for this class. Join Yew Dell Executive Director and chief tree geek, Paul Capiello, for this hands-on session that will cover all the basics, some good, healthy debate and a little horticultural philosophy as well. Come with your work gloves, pruners and a bag full of questions.

Yew Dell Garden Gift Shop opens for the season!

Saturday, March 31;

10am-4pm

Stop in and get the first pick of fabulous new 2018 merchandise!



Plant Sale and Garden Market

Members-Only Plant Sale Preview and Purchase Party

Friday, April 27; 6-8:30pm

Cost: Free for members (Not a member? Memberships for sale at the door!)

New for 2018! The Plant Sale has become an epic horticultural event, attracting passionate plant people from across the region. And to give our faithful members first and best shot at this year's plant offerings, we're throwing a party. Come by to hit the plant sales tables, enjoy some light snacks, cash bar (featuring brews from our friends and neighbors, 3rd Turn Brewing) and maybe even a silent auction of a few of the best and coolest plants around.

Plant Sale Saturday!

Saturday, April 28; 10am-3pm

Members get in at 9am on Saturday!

Free with Regular Admission

If you've been... you know the drill. If you haven't... you'll want to put this one on your calendar. For one day only (no Sunday sale this year) take advantage of the best plant offerings this side of anywhere. Perennials, shrubs, trees, vines, tropicals, herbs and more... you'll find the best tried-and-true to the best of the new. Plan to get here early for best selection... free for Yew Dell Members (memberships available at the door!)

New Website Coming in 2018!

We've been working on a new website for the past several months and will be launching soon. Not to worry - we will send an email announcement so everyone can check it out!

Hypertufa Workshop on Plant Sale Saturday

Instructor: Janice Morgan, Rental and Event Assistant

Saturday, April 28; 1-2:30pm

\$35/\$45 - Members/Non-members

Here's the perfect opportunity to create a horticultural masterpiece for your own garden. Yew Dell's Rental and Event Assistant and gardener extraordinaire, Janice Morgan, will guide you through the process of crafting your own hypertufa trough. Hypertufa containers are the perfect container for low maintenance plants like succulents and cacti and they are cool looking! After you are finished crafting your container, you can shop the Plant Sale for the perfect plants to reside in your new hypertufa creation!

SUMMER

Children in the Dell Saturday

Begins June 2; 10:30am-noon

Free with the admission of a parent or guardian

Every Saturday morning through August 25th!

Join our usual merry band of kiddos in the Children in the Dell World Headquarters (aka the log cabin) rain or shine! This popular Saturday morning program is the perfect opportunity to give children a chance to spend some time with all that is green. Our energetic and creative educators will engage the children in everything from planting and growing veggies to nature-inspired scavenger hunts, and a whole lot more. Whatever happens to be in season will be the topic du jour. Intended for children from 5-10 years old. Parents must stay on the grounds and are invited to participate in the day's activities. Preregistration encouraged – drop-ins welcome as space allows.



Summer Nature Art Camp for Kids age 7-12

Session I:

Monday, June 4 – Friday, June 8; 9am-4pm

Session II:

Monday, June 18 – Friday, June 22; 9am-4pm

Session III:

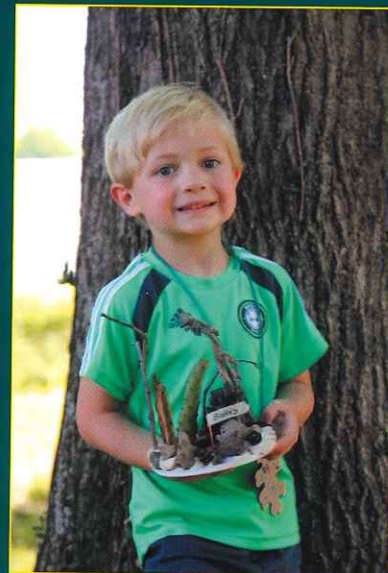
Monday, July 9 – Friday, July 13; 9am-4pm

\$155/\$180 - Members/Non-members

Yew Dell and Louisville Visual Art's summer camp was such a success last year that we are expanding this year! The nature art summer camp will give children 7-12 the opportunity to explore the wonders of our botanical gardens through a creative lens. Imagine creating art in a castle or along our woodland trails! Artists will tap into their creative genius with guided curriculum and help from the great outdoors. The natural world offers the opportunity for children to draw, design, paint, sculpt and create their way toward beautiful works of art. Stay tuned for more details regarding registration. Any questions, please e-mail Ehren Reed at Ehren@louisvillevisualarts.org.



Sign up for one of our GREAT Children's Programs **TODAY!**



THE PLANT PAGE

By Paul Cappiello, Ph.D.

Yew Dell and Midwest Peony Society Partner on Major Intersectional Peony Collection and Display



Peony breeder Roger Anderson with a new planting of some of his best intersectional hybrids. Swenson Gardens recently donated 48 plants of Anderson's hybrids for Yew Dell's new peony collection.



A hybrid of a herbaceous and tree peony, the intersectional variety 'Garden Treasure' has been one of the best in Yew Dell's collection.



Famed peony breeder Don Hollingsworth with his intersectional hybrid peony 'Garden Treasure' near the Yew Dell visitor center.

A recent phone call from Midwest Peony Society founder and avid Floyds Knobs gardener, Don Smith . . . "Hey Paul . . . how'd Yew Dell like to have the best intersectional peony collection on the planet . . . a display that'll bring in visitors from all around the globe?" Don knows me. He knows that any combination of the words "plant" and "collection" is enough to pique my interest any day of the week.

Ok, let's back up a bit. We all know peonies – those blousy, wonderful spring bloomers that have been garden and cut flower mainstays since the invention of the garden spade. Now the old fashioned herbaceous peonies are what we sometimes call lawnmower specials. The blooms are so large that when in bloom, plants flop over the edge of the bed so when the neighbor kid swings by with his trusty lawn mower, the lawn gets sprayed with pink confetti! But more modern selections offer stiff and sturdy stems and enormous blooms. No more mower peonies!

Far lesser known are the tree peonies – woody shrubs with spectacular spring peony flowers ranging from white to pink, deep burgundy and even yellow. Tree peonies have been grown for centuries in Asia but never quite caught on in this country. They can grow to 4' or so and love bright sunny locations. Unfortunately, they look miserable for the latter half of the growing season, with brown and failing foliage.

Enter one Toichi Itoh, a Japanese peony aficionado who, back in the mid-1900s first successfully crossed a herbaceous and tree peony and introduced the first of what would become known as the intersectional peonies.

Intersectionals are hands down the cream of the peony crop. They die back to the ground each winter like traditional herbaceous peonies but have superior foliage that looks great all through the growing season. Their blooms are enormous, held on stiff, short stems and last much longer than either parent. They come in a fantastic range of colors.

For quite a few years we have grown 'Garden Treasure', a Don Hollingsworth introduction that bears stunning yellow blooms. It is located along the entrance path just beyond the Visitor Center. It always elicits ooohs and aaahs when in bloom and has long been one of our favorites. But more are on the way . . .

This past fall, several hybridizers and nurseries agreed (with Don's arm twisting, no doubt!) to supply a long list of intersectional varieties to build this collection. The largest haul arrived one day in the biggest and heaviest UPS box ever delivered! With 48 plants representing 16 varieties, Swenson Gardens (swensongardens.com) donated plants hybridized by Mr. Roger Anderson, one of the nation's top breeders and the developer of 'Bartzella', by far the most popular intersectional variety on the market. Look for the Anderson collection along the main entrance path, across from the castle this spring, and a whole lot more spotted elsewhere around the grounds.

THANK YOU'S AND FAREWELLS...

After a passionate run of board service, we were sad to say good-bye to Stock Yards Bank CEO David Heintzman as he rotated off the board. David was active on our finance committee and his banker's eye was always firmly fixed on the ever-important numbers. But he was also enthusiastically interested in plant and nursery special projects, including our newest planned commercial nursery venture. We will miss David's sharp eye, enthusiasm and sense of humor.

And we were also sad to bid adieu to our long time development Czar, Gayle Kussoy Shoemaker. For 5 years Gayle headed up our fundraising efforts. She built our corporate sponsorship program, created the Corporate Partner Day, streamlined our membership efforts and served as our Top Gun of all things that needed editing. Gayle, her husband Chris and daughter Sadie welcomed their new family addition, Annie, in December!

Paul's winter reading list

When the garden ground is frozen solid or sodden muck, it's tough to get much done out there. There's only so much pruning that can be done. So most gardeners turn to their books, catalogs and iPads to while away the dark of winter and find inspiration for the coming season. So in the spirit of the winter gardener reader, here are a few of our favorite books, websites and catalogs to get you through the winter.

The Bulletins of Reef Point Gardens, Beatrix Farrand

The mother of American landscape architecture, Farrand and her husband lived and gardened at Reef Point, their splendid estate on the coast of Maine. Starting in the mid 1940's, she produced a series of bulletins chronicling their horticultural experiments, garden work and observations written herself and by others, including longtime gardeners on the property. Those original bulletins are highly prized and almost impossible to find but fortunately they were assembled and republished in 1997.

The bulletins are an absolute joy to read, so full of almost stream of consciousness gardener's musings that you feel like you're sharing a cup of tea with the author. I reread this every winter and enjoy it more every time I pick it up.

In the Land of the Blue Poppies, Frank Kingdom Ward

This is one for the armchair adventurer/gardener and anyone else interested in wild adventures. Kingdom Ward is considered one of the most intrepid and successful of plant collectors who, during the early 1900s, ventured out on 24 plant collecting trips throughout Asia. Of legendarily cast iron constitution (I think he would have gotten in his 10,000 daily steps before breakfast!), he writes in vivid and passionate voice about the landscape, plants, people and politics of the countries he scoured. This is an extreme page turner for even the non-gardener. The 1913 1st edition will cost you about \$2,500 if you can find it but there are several reprints available – even a soft cover for a few bucks.

Plant Delights Nursery (plantdelights.com)

PDN founder and owner Tony Avent is a legendary character in the cool plant world. His website and mail order catalog are written in his unique voice that somehow successfully combines uproarious wit and biting sarcasm with serious information. It also doesn't hurt that his nursery typically offers more than 1500 different types of plants at any one time. And aside from individual plant descriptions available on the website, there's an article archive that offers great reading. Cold hardy bananas, anyone?

Garden Rant (gardenrant.com)

Here's a fun one that'll keep you occupied for a whole winter of long, dark nights. Periodic garden essays cover about any topic you can think of and a whole lot that might make you scratch your head . . . at first. All are fun, informative, insightful and written in a range of styles as diverse as the list of authors: Louisville's own dean of garden plants Allen Bush, former CJ writer and all around plant dweeb Bob Hill and a bunch of others from across the US. The author list even includes garden journalist and writer Thomas Christopher with whom I worked during my very first garden job – a high school internship working with Tom on the grounds of a Hudson Valley estate. Small world!

Shade Garden Expert (shadegardenexpert.com)

Southern Indiana plantsman, gardener, nurseryman, author, publisher . . . and all around great guy's site is always a great read. Gene knows more about shade plants than most people know about their kids and he shares his knowledge with a heartfelt delivery that reads like an overstuffed recliner feels – comfy and inviting.

Final note! Please don't send me hate mail for leaving out your favorite garden book, mail order catalog or website. Even my little library contains more than 3,800 plant and garden books and I could have written about a bunch of 'em!

WHAT'S GROWING ON!

Thanks to all the volunteers who made 2017 such a successful year at Yew Dell Botanical Gardens. Our Volunteer Program has grown in size, and not just in numbers, but also in talents and skills. We feel so lucky to have so many dedicated individuals as a part of our Yew Dell family. We look forward to continuing to grow our community in 2018. We love Yew!

-Yew Dell Staff



Volunteer Spotlight

Meet Fran Pullias!

For those of you who have always admired our decorations during events like Boo Dell and Yuletide, now is your chance to finally know the mastermind behind it all... Fran Pullias! We could not think of a better person to celebrate during the holidays. Fran contributes to Yew Dell in so many creative ways including: donating her artistic skills to our Silent Auction at Twilight, building unforgettable fairy houses for our Fairy Forest, creating a breathtaking backdrop for pictures with Santa during Yuletide, and transforming our grounds into a fun and festive experience for families during Boo Dell. And if decorating isn't enough, Fran is also a Yew Dell tour guide and helps with clerical work in the office. We just couldn't do it without her numerous talents and skills. Thank you Fran for your hard work and dedication to Yew Dell!



Greenhouse Mondays

Every Monday

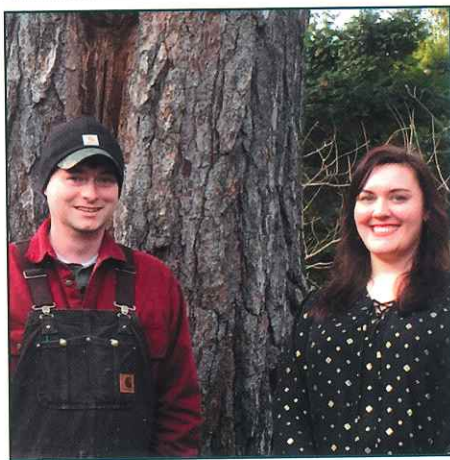
January - April 2018, 10am - 12pm

Keep up with our gardens during the colder months by volunteering in the greenhouse! We are looking for gardeners of all skill levels to assist us with the care of our cacti and succulent collections. We will also start seeds for plants that will be on display and used in research projects. This is a great way to get a first look at some of the newest and coolest plants coming to Yew Dell. Just call 241-4788 to sign up.

Other News...

Our Volunteer Coordinator, Lindsay Duncan, is on maternity leave until February 2018! She will be available via e-mail at the beginning of the new year. Thanks to everyone for their support during the past 9 months! She looks forward to Yew Dell volunteers meeting her new addition in the new year.

Mark your calendars for the 2018 Volunteer Celebration on Saturday, March 24 from 10 - 11:30am! We will be honoring the Volunteer of the Year, Tour Guide of the Year and all the other volunteers who greatly contributed to our gardens in 2017.



Welcome New Staff!

We were delighted to welcome two new staff members in early January and know you'll love getting to know them.

Jacob Stidham, a graduate of Purdue University (Landscape Horticulture and Design) was hired as our new greenhouse and nursery manager. He will be overseeing plant propagation and production, expansion of our nursery operation and generally giving our horticulture programs a significant boost. He was most recently General and Greenhouse Manager at Wilson's Nursery in Frankfort, Ky where his list of responsibilities included everything from retail sales to plant production, customer workshops and a whole lot more.

Amiee Conrad-Hill is also settling into her new post as our new development manager. A graduate of the University of Evansville political science program, Amiee has a background in grant writing and reporting and donor database management. Her development career includes stints at Volunteers of America, USPIRITUS and the Community Foundation of Southern Indiana.

We're excited to have both on board and hope you'll wish them a hearty welcome next time you're on the grounds.

ICICLE SUN CATCHERS

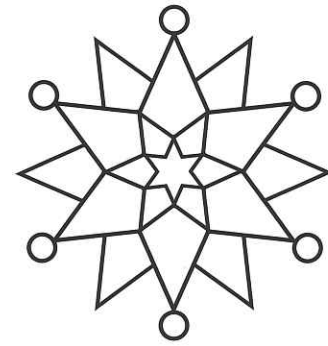


When those dreary winter days are getting you down, add a little sparkle to your surroundings by making icicle suncatchers from "old school" Borax laundry detergent booster. The sparkly clusters are made by dipping shaped pipe cleaners into Borax dissolved in boiling water. As the water cools, crystals will form and cling to the pipe cleaners.

Materials:

- o 12 Tbsp Borax (found in the laundry detergent aisle)
- o 4 cups boiling water
- o Colorful metallic pipe cleaners, (the fuzzier, the better)
- o Pencil or pen
- o Thread or string
- o Tape
- o Mason jars (2 pint jars)

1. Begin by twirling your pipe cleaners around a pencil to form a spiral-shape.
2. Tie a piece of thread to the top of the icicle. Make sure this piece of thread is long enough that you can turn it into a hanging loop for your icicle when you're finished.
3. Boil 4 cups of water and stir in 12 Tablespoons of Borax into water. Stir your solution until the Borax has completely dissolved. (It will look clear.) This can take a few minutes.
4. Next, pour your Borax and water solution into your glass jars.
5. Using the string tied to the pipe cleaners, tape the string to a pencil. Drop the pipe cleaners into the solution. They should be covered by the solution and hang freely without touching each other or the sides of the jar.
6. Put your jar in a safe place where the solution can cool. After a few hours the crystals will begin to form. For maximum crystals leave them overnight.
7. Remove the icicles from the jar and let drip dry. If your icicles have attached to the jar, carefully loosen with a knife.
8. Hang the icicles and watch them shimmer in the sunlight!



WINTER WORD SCRAMBLE

Instructions: Unscramble the letters to find the Winter words from the list below.

- fzreio _____
- etesl _____
- ksingi _____
- sovlge _____
- gloio _____
- iwentr _____
- zocy _____
- leovsh _____
- ktjaec _____

Word List

- cozy shovel
- frozen skiing
- gloves sleet
- igloo winter
- jacket

For A Few Laughs

Q: Where does a polar bear keep its money?

A: ***In a snow bank!***

Q: What did the snowman say to the customer?

A: ***Have an ice day!***

Q: What can you catch in the winter with your eyes closed?

A: ***A cold.***

Q: What did the big furry hat say to the warm woolly scarf?

A: ***"You hang around while I go on ahead."***

**Certified
Arborists On
Every Job.**



LimbwalkerTree.com

502.634.0400



Paul Clinton

Beechwood Trees & Gardens

1988 - 2018

30 years serving Oldham County

For a free estimate on your tree or landscape needs call 241-0471



Natural Products LLC.

NATURALPRODUCT@BELLSOUTH.NET

ORGANIC RECYCLING • HARDWOOD MULCH • CEDAR MULCH

SAND • LANDSCAPE MIX • ORGANIC COMPOST

TOPSOIL • DECORATIVE ROCK • DELIVERY

COMMERCIAL & RESIDENTIAL



WWW.NATURALMULCHLAGRANGEKY.COM

OFFICE: 502.222.4545

2800 INTERIOR WAY

FAX: 502.222.1963

LAGRANGE, KY 40031



**GREENHAVEN
TREE CARE**
244-8770

WINTER PRUNING ~ SPRING FERTILIZATION

WWW.GREENHAVENTREECARE.COM

HONORARY AND MEMORIAL DONATIONS

Purchase of a memorial/ honorary bench has been and continues to be an excellent way to remember a loved one, mark a special occasion, or honor a valued friend. Contact a staff member for details.



MEMORIAL GIFTS

In Memory of Mary Louise Barr
Mary Broecker
Mary and Robert Rounsavall

In Memory of Lois U. Davis
Susan M. Bentley
Loretta Shearer

In Memory of Mel Gregory
Christine Dantos
Robert M. Koehler
Robert and Joyce Margie
Jack Yost

In Memory of Marian Klein Koehler
Jody and Tom Block
Allen Bush and Rose Cooper
Mel and Joyce Gregory
Sarah and Paul Keith
Robert M. Koehler
Barb and Dale McMakin

In Memory of Lauren Michelle Matter
Colonel Carl and Mrs. Bonnie Matter

In Memory of Elizabeth "Libby" Reutlinger
Charles and Tori McClure

In Memory of Preston Thomas
Sarah and Paul Keith

HONORARY GIFTS

In Honor of Eunice Blocker
John S. McGeeney
Ellen Rudd

In Honor of Dr. Paul Cappiello
Anonymous

In Honor of Mr. and Mrs. George C. Collins
John and Gretchen Clark

In Honor of Phil Payne
Stephen Linker

In Honor of Mr. and Mrs. G.C. Rounsavall
John and Gretchen Clark

In Honor of Mr. and Mrs. R.W. Rounsavall
John and Gretchen Clark

In Honor of Mary Rounsavall
Kim Hudson, Jack Gillette and your friends at Stock Yards
Bank and Trust
Elliott Rounsavall
Elizabeth Rounsavall

In Honor of Mr. and Mrs. John Stough Jr.
Allen and Margie Schubert

In Honor of Yew Dell Staff
Mary Rounsavall

In Honor of Mr. and Mrs. George Vieth
Allen and Margie Schubert

In Honor of Mr. and Mrs. Charles West
Allen and Margie Schubert

In Honor of Mr. and Mrs. William West
Allen and Margie Schubert

Gifts received between
9/28/2017 - 12/20/2017

We apologize for any errors or omissions in this list.



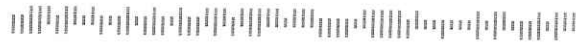
YEW DELL BOTANICAL GARDENS

6220 Old LaGrange Road • Crestwood • Kentucky • 40014
yewdellgardens.org

NON PROFIT ORG
U.S. POSTAGE
PAID
Louisville, Ky.
PERMIT #879



Yew Dell Botanical Gardens is a partnership project of the Garden Conservancy, a national, non-profit organization founded to help preserve America's exceptional gardens.



4326 S10 P6 *****AUTO**5-DIGIT 40025
Current Member 05/11/18
Mr. and Mrs. Robin Cooper
PO Box 21
Glenview KY 40025-0021



YEW DELL BOTANICAL GARDENS

January • February • March 2018



'LIKE' US ON FACEBOOK

Winter & Spring Programs 4-5

What's Growing On - Volunteer Page 8

Growing Young Gardeners 9

SPECIAL THANKS TO:
United Mail, Inc.

Salix gracilistyla 'Mt Aso' – Rosegold Pussy Willow