

# The Castle Chronicles

SPRING 2010



*Cornus florida Cherokee Brave™*

## 8TH ANNUAL PLANT SALE AND GARDEN MARKET



It's that time again! Can you believe we are getting geared up for our 8th Annual Plant Sale and Garden Market? We've been hosting the Plant Sale since we first opened to the public back in 2002, so we think we have a pretty good system going. You can be sure we will still have dozens of reputable vendors, perfect weather (fingers crossed), a play area for kids and most importantly, we promise to have loads of great new and unusual plants and garden accessories for sale.

Besides all of the cool new plants you will find, we think that Yew Dell's plant sale is so unique because we plan carefully for months in order to bring you the best new plants that the industry has to offer. You can be sure that if we have something for sale it has our stamp of approval. Not only do we sell plants suitable for every type of garden, but we also realize how important it is to have Yew Dell staff, volunteers and other garden professionals scattered throughout the

grounds in order to help you find exactly what works for you.

So, if you're a beginner, come for the expert advice and if you are a seasoned gardener, come find the plant you just haven't been able to get your hands on yet. Of course, our members always get in FREE (and an hour early on Saturday, 9AM!). And don't forget, events like the annual plant sale help support Yew Dell's ongoing education programs designed to teach others how to use plant resources responsibly and sustainably. We hope to see you there!

Thanks to E. ON-US and Louisville Nursery Association for sponsoring this event.

8th Annual Plant Sale and Garden Market will take place at Yew Dell on Saturday, April 24 and Sunday, April 25. See page 4 for hours.



*Hydrangea quercifolia 'Shannon'* (Theodore Klein selection that we'll have for sale)

### Collection Profile: Hosta

What would the shade garden be without hostas? Come check out Yew Dell's collection all season long to select your favorite form.

Genus 1 *Hosta*

Species 8

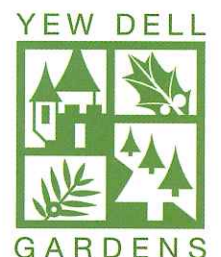
*H. lancifolia,*  
*H. montana,*  
*H. nakaiana,*  
*H. plantaginea,*  
*H. sieboldiana,*  
*H. undulata,*  
*H. ventricosa,*  
*H. yingeri*

Cultivars 331

Specimens 368

Size range 4"-6'+ in width

Cultural tips: Protect from deer! Mulch with pine straw to reduce slug damage.



# Director's Letter

However you spell cabin fever, this past winter certainly took the cake. Louisville-area gardeners of all levels became desperate for anything to do to distract them from looking out the window at the sad state of their gardens. It got so bad at the Cappiello household that I was almost tempted to take a look at my indoor project list! Fortunately for all, Yew Dell has some outstanding remedies for even the most fevered of winter sufferers.



*Hosta 'Sage'*

As you'll read elsewhere in this issue of the *Chronicles*, we'll kick off the garden season with the Annual Plant Sale & Garden Market—the best place to find the newest and coolest plants the garden world has to offer. With kid activities, tours, and a host of excellent vendors from the area, this is sure to get you rejuvenated and fired up for garden planning and planting this spring.

While the first weekend in May already gets a little attention in Kentucky, we think NBC should rethink their programming schedule and come to town the last weekend in May for the opening of Yew Dell's 3rd Annual Sculpture Show. The Friday night opening reception will not only provide the perfect opportunity to view great garden art and meet artists, but at the event, we'll officially open our new visitor center and garden shop. Our newest facility will offer a greatly improved visitor welcome and top-notch garden gifts from plants to gardening supplies, garden-themed jewelry, kid gifts and more.

Later in the summer, look out for our cutting propagation workshop, garden walks (hydrangea walk in July!), hummingbird festival, and a constantly evolving list of garden-related happenings. And all through the season, plan to be at Yew Dell for our 3rd Thursday Concert Series featuring a varied list of performers from baroque to jazz, Celtic to bluegrass and more.

And if all the programs don't offer enough reason to visit, then plan a quiet walk through the gardens, along our new woodland hiking trails, or just sit on a bench and simply take in the scenery.

I look forward to seeing you in the gardens!

Happy Gardening!

*Paul Cappiello, PhD*  
Executive Director



## THE PERFECT GIFT

*Purchase of a memorial/honorary bench or set of chairs has been and continues to be an excellent way to remember a loved one, mark a special occasion, or honor a valued friend.*

*Now we've added a new opportunity—purchase a special memorial/honorary container to adorn the grounds. These containers are beautiful and weather proof and can be left on the grounds all year long. Call 502.241.4788 for information.*



## BUILDING THE BONES OF THE GARDEN

Each spring, gardeners everywhere practice what I like to call the spading-fork waltz. This is the age-old practice of sauntering about the garden with a plant delicately balanced on the tines of your spading fork, looking for just the right place to jam it into a spot that's about one-tenth the size it needs. Don't laugh. I know you've done it. Heck, I've raised it to a high art form in my garden!

Having now admitted that we *all* belong to that shameful group of gardeners, I'll offer a different approach – actually planning ahead to make a lasting and positive impact on your garden. And about the best thing any of us can do for long-term garden improvement is to create great bones in the garden. We're not talking about a calcium source here. No, creating great garden bones refers to the basic, year-round structure formed by the key woody plants in the garden. Annuals die in the fall. Perennials hibernate below ground. The containers go back in the garage. But, the woody plants are there all year long. So here's a sampling of a few to consider this spring...and we may just happen to have them available at the plant sale.



*Magnolia macrophylla* - bigleaf magnolia

**Magnolias** – What can I say? I'm a sucker for these early bloomers. Despite the fact that they can sometimes get nipped by frosts, we've put together a list of later blooming varieties. 'Sunspire' is one of the latest blooming yellows, and as the name implies, a tall, narrow grower. *Magnolia sieboldii* is a stunning summer bloomer; white with a red/purple center on a shrubby frame. The evergreen *M. virginiana* (sweetbay) is best represented by 'Henry Hicks' (fully evergreen) and 'Perry Paige' (Sweet Thing™), a dwarf shrubby form that is brand new on the market.



*Hydrangea arborescens* 'Hayes Starburst'

**Hydrangeas** – I know you already have some, but I bet you don't have these . . . Just in the oakleaf type, we have 'Ellen Huff', 'Harmony', 'Pee Wee', 'Little Honey', 'Shannon', 'Sikes Dwarf', 'Summit', and 'Vaughn's Lillie'. Their midsummer flowers and exquisite fall foliage make them perfect for any garden. You'll have to come see for yourself what other selections we have on hand.



*Cercis canadensis* 'Appalachia Red'

**Redbud** (*Cercis canadensis*) – this small tree is excellent for full sun on well-drained soils. And we all know what redbuds do in the spring landscape – that early purple-pink haze among the earliest green fuzz that covers Kentucky hillsides. What everyone likely doesn't know is that suddenly, redbud has become cool. New varieties are hitting the market faster and more frequently than

a woodpecker pounds on your aluminum gutter. 'Appalachia Red' offers screaming fuchsia flowers. Theodore Klein's 'Silver Cloud' is still among the best of the variegated forms but 'Floating Clouds' is a new, finer textured form. 'Hearts of Gold' adds intense yellow foliage all through the summer. The very compact 'Ace of Hearts' gives gardeners still another option for the garden.



*Camellia* 'Winter's cupid'

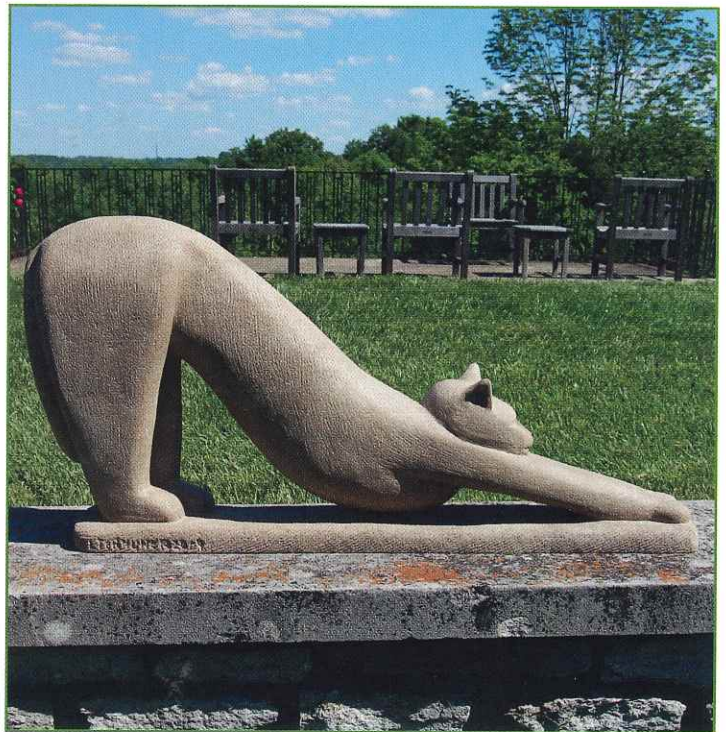
**Camellias** in Louisville, you ask? Camellias are synonymous with southern gardening. Perhaps you've read about them and maybe even tried one or two. At Yew Dell, we've tested dozens, and the forms that have done best are the fall bloomers. We've brought in a range of fall-blooming types that will have the best shot of making it in our area.

So hang up the spading fork and get to work planning those bones. Your garden will be better for it.

# Upcoming Garden Education & Events

## Annual Events 2010

PLANT SALE.....	4/24-25
SCULPTURE SHOW MEMBERS' ONLY OPENING RECEPTION ...	5/28
SCULPTURE SHOW OPENING WEEKEND.....	5/29-30
TOMATO & HERB WORKSHOP .....	8/10
HUMMINGBIRD FESTIVAL .....	8/28
TWILIGHT IN THE GARDEN .....	10/9
BOO DELL .....	10/30
WREATH/TOPIARY WORKSHOPS .....	12/4



Sculpture Show 2009

### 8TH ANNUAL PLANT SALE AND GARDEN MARKET

What more can we say? Be here for members' only early access (9am Sat.) and first shot at the best plants. The weekend will include a wide variety of outstanding vendors, the Louisville Bonsai Club show in the Gheens Barn, activities for kids, refreshments and garden tours.

April 24-25 10am-4pm Saturday, 11am-4pm Sunday; Regular Admission

### THIRD THURSDAY CONCERT SERIES

Join us for our second annual Third Thursday Concert Series in the Gheens Barn. This season we have everything from Jazz to Bluegrass, and Celtic to Baroque. No matter what your taste, this is certainly one of the best venues for live music this summer.

4/15 Harry Pickens Trio  
5/20 Whiskey Bent Valley Boys  
6/17 Harry Pickens Trio  
7/15 Bourbon Baroque  
8/19 Bourbon Baroque  
9/16 Whiskey Bent Valley Boys  
10/21 Keltricity  
11/18 Harry Pickens Trio

7:00pm-9:00pm; \$12 members/\$15 nonmembers

### SPRING SHRUB WALK

This is the perfect post-Derby garden activity. The grounds will be lush with flowering shrubs, trees and spring perennials. This walk will cover the best the spring garden has to offer.

May 5, 6:30pm-8:00pm; \$15/\$25 members/nonmembers

### CUTTING PROPAGATION WORKSHOP

Plant propagation is the perfect blend of the art and science that make up the field of horticulture. This workshop will provide all the pointers necessary to make you a standout plant propagator. Participants will propagate a variety of plants that can be taken home once rooted! This workshop is a great way to get some super plants for your own garden. We will offer two sessions to accommodate different schedules.

May 13, 10am-noon and 6:00pm-8:00pm; \$25 members/\$35 nonmembers

### THIRD ANNUAL GARDEN SCULPTURE SHOW

Artwork from more than twenty local and regional sculptors and glass artists will be on display and available for purchase at this year's Sculpture Show. Last year, the Sculpture Show welcomed more than 4000 visitors. This year, all of our featured artists will be juried by a high-profile panel of judges. Yew Dell's Sculpture Show offers a truly unique environment for regional artists and serves as a conduit for connecting artists with garden designers and garden lovers.

Opening Weekend May 29-30, Show Runs through Aug. 1; Regular Admission

To register, visit:  
[www.yewdellgardens.org](http://www.yewdellgardens.org),  
or call 241.4788

Advanced registration required for all charge events

## THIRD ANNUAL SCULPTURE SHOW

We are again looking forward to Yew Dell's 3rd Annual Garden Sculpture Show. For the past 2 years, we have garnered record attendance and a wealth of positive feedback from artists who were thrilled to be part of an event conceived to connect talented artists with great gardeners.

This year's show will include more than 70 pieces in a wide-range of materials and styles. The artwork will be displayed throughout the gardens in venues chosen specifically by the artists. This year's event will feature more than twenty local and regional sculptors and glass artists. And, in keeping with tradition, we will include pieces from two local high schools so art lovers in the area can get a first glimpse of the area's up and coming artists.

New this year, we brought in a jury comprised of local art experts to help us choose which pieces to include in the show. Also new this year, we are proud

to include the work of The Louisville Glass Art Society. Louisville is lucky to have a strong contingent of talented glass artists and we are happy to recognize the importance of glass as an artistic medium by incorporating it into our exhibit this year.

Yew Dell offers a truly unique environment for regional artists and we are eager to be able to foster collaboration in the local arts community and to serve as a conduit for connecting artists with garden designers and garden-lovers.



Thank You to our sponsors:  
Rev. Al Shands, Oldham County  
Educational Foundation and  
Ellen and Hendrik van Nagell.  
Sponsorship opportunities are  
still available.

*Open viewing for the public begins on  
May 29th and continues for two full  
months. The show is scheduled to close on  
August 1, 2010.*



*Brunera macrophylla "Jack Frost"*

## MEMORIAL/HONORARY DONATIONS

*December 1 2009 – February 28, 2010*

IN HONOR OF;  
Yew Dell Board Members  
*Dr. and Mrs. Paul Cappiello*  
Yew Dell Staff  
*Mary Anne Thornton*  
*Mr. and Mrs. Robert W. Rounsavall*  
Louise Hickox  
*Ms. Audrey W. Otto*  
Mary Rounsavall  
*Mr. Robert W. Rounsavall*

IN MEMORY OF;  
Edith Fitzhugh Camp  
*Anonymous*  
*Mr. and Mrs. Hunter Louis*  
*Mr. and Mrs. Robin Cooper*  
*Mr. and Mrs. Robert W. Rounsavall*  
Vincent Alexander Nold  
*Mr. and Mrs. Chris Haragan*  
Mary Caroldine Russell  
*Mr. and Mrs. Kurt Broecker*

## MEMBERSHIP

Yew Dell membership offers a wealth of benefits including **admission** all year long, **discounts** on all Yew Dell classes, lectures and workshops, **invitation** to member-only events and **early admission** to the annual **Plant Sale and Garden Market**. Members also receive discounts at area nurseries and garden centers and coupons and gift certificates for plants and garden supplies—membership pays for itself several times over! We are continuing to offer all our \$150 and up members a **special plant dividend** available only at our annual plant sale. We're even offering guest passes for your friends and family members. Check the website for complete details.

Yes, I want to show my support of Yew Dell Gardens by becoming a member today.

- |   |                          |
|---|--------------------------|
| <input type="checkbox"/> Virginia Bluebells   | (\$35/single membership) |
| <input type="checkbox"/> Silver Cloud         | (\$50/family membership) |
| <input type="checkbox"/> Weeping Katsura      | (\$150 - \$499)          |
| <input type="checkbox"/> Golden-Berried Holly | (\$500 - \$999)          |
| <input type="checkbox"/> The Dell Society     | (\$1,000 & above)        |
| <input type="checkbox"/> Other Donation       |                          |

Contact me about volunteer opportunities at Yew Dell  
Membership purchase also available on the Yew Dell Gardens website ([www.yewdellgardens.org](http://www.yewdellgardens.org))

Total Contribution \$ \_\_\_\_\_

Name \_\_\_\_\_ Phone \_\_\_\_\_

Address \_\_\_\_\_ City \_\_\_\_\_

State \_\_\_\_\_ Zip \_\_\_\_\_ Email \_\_\_\_\_

Method of Payment:  Personal Check  MasterCard  Visa Exp. Date \_\_\_\_\_

Card Number \_\_\_\_\_ Signature \_\_\_\_\_

PLEASE MAIL YOUR  
MEMBERSHIP TO:  
YEW DELL GARDENS  
P.O. BOX 1334  
CRESTWOOD, KY 40014

# YEW DELL HAPPENINGS

## YEW DELL TO OPEN NEW VISITOR CENTER AND GARDEN SHOP

If you've been to Yew Dell lately, you may have noticed a lot of commotion in the Tobacco Barn. We're happy to report that it is because Yew Dell Gardens is growing! As part of Yew Dell's master planning efforts, and thanks to generous donors, we have designed and begun construction on a new visitor center and garden shop. Renowned architects Ross Primmer and Roberto DeLeon, who also designed the award-winning Gheens Barn and Pavilion, worked closely with the staff and retail consultant, Andrew Andoniades, to produce a structure that will serve as a visitor welcome center and museum-quality garden shop that will carry unique and useful products, many from local and regional artists and merchants.



Architect's rendering of the view of the new visitor center and garden shop as you enter the Tobacco Barn.



Architect's rendering of the "crystalline box" that will serve as the new Visitor Center & Garden Shop.

The new center, set for completion in late May, will allow us to welcome and track our visitors more professionally and efficiently. It will improve our ability to develop our membership base and will eventually become a reliable source of earned income for Yew Dell.



2010 Volunteer of the Year, Debby Levine. Debby has been on of our most dedicated garden volunteers. She has tended gardens, curated collections, planted, pruned, mulched and just about everything else a gardner can do. The staff would like to salute Debby for her tremendous dedication. Thanks, Debby, for a job well-done!



## Limbwalker

### Tree Service, Inc.

Certified Arborists • Fully Insured











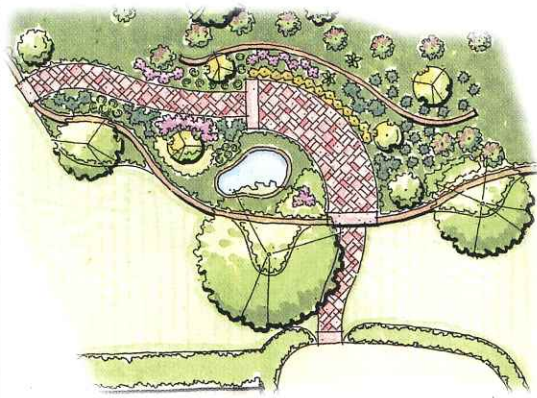


Removals • Pruning • Cabling / Bracing  
Soil Conditioning • Tree Injections

www.limbwalkertree.com

(502) 634-0400

Kentucky tree climbing champions  
2002, 2003, 2005, 2006, 2007, 2008, 2009



## Design...

Beechwood Trees and Gardens offers full landscape design services including:

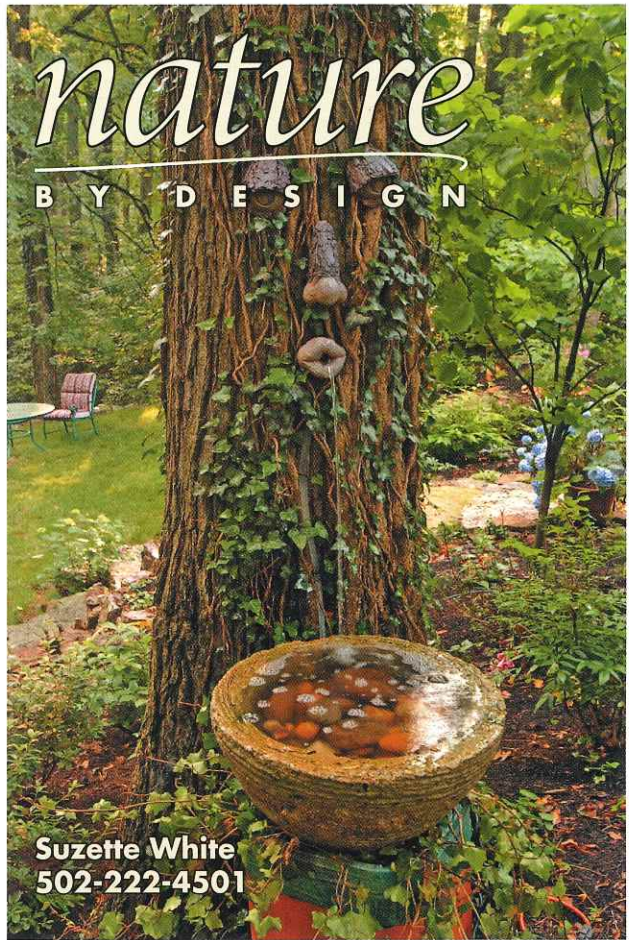
- Planting plans
- Fountains, ponds, and water features
- Patios, walkways, stairs, and retaining walls



**Beechwood  
Trees & Gardens**

Crestwood, KY 502-241-0471

*Turning landscape dreams to reality since 1988*



**Suzette White  
502-222-4501**

*Turning landscape dreams to reality since 1988*



**Beechwood  
Trees & Gardens**

Crestwood, KY 502-241-0471

Beechwood Trees and Gardens offers full landscape installation and maintenance services including:

- Planting trees, shrubs, and groundcover
- Pruning, mulching, and fertilization
- Installing walls, walks, and patios
- Tree removal, stump removal and grinding

## ...Build




## GREENHAVEN TREE CARE INC.

- Pruning
- Tree & Stump Removal
- Consulting
- Cabling
- Fertilization

Office (502) 244-8770  
FAX 244-8771

**1901 Williamson Court  
Louisville, Kentucky 40223**



## BECOME A FAN OF YEW DELL!

Did you know that you can become a fan of Yew Dell Gardens on Facebook? All you have to do is go to [www.facebook.com](http://www.facebook.com) and search for Yew Dell and become a fan. You'll get access to news and information, plus lots of photos of what's happening on the grounds. Become a fan today!



*Dryopteris affinis*

Yew Dell Gardens is a partnership project of the Garden Conservancy, a national, non-profit organization founded to help preserve America's exceptional gardens.

NON PROFIT ORG  
U.S. POSTAGE  
PAID  
Louisville, Ky.  
PERMIT #879

### Staff

DR. PAUL CAPPIELLO  
Executive Director

KARLA DROVER  
Assistant Director

LEAH WHITMER  
Director, Marketing & Development

BONNIE HEATON  
Volunteer Coordinator

JO ANNE FISCHER  
Gardens Manager

DON HIGHTCHEW  
Buildings & Grounds Manager

IRIS GOODE  
Development Associate

### The Castle Chronicles

#### YEW DELL, INC.

6220 Old LaGrange Road  
Crestwood, KY 40014  
(502) 241-4788

#### OPEN HOURS

April through November:  
Monday - Saturday 10 a.m. - 4 p.m.  
Sunday noon - 4 p.m.

December through March:  
Monday - Friday 10 a.m. - 4 p.m.

**David S. Whitty**  
*Vice President/Investments*

**(502) 420-3247**  
4969 U.S. Highway 42 • Suite 1000  
Louisville, Kentucky 40222

**STIFEL NICOLAUS**  
*Investment Services Since 1890*

Stifel, Nicolaus & Company, Incorporated  
Member SIPC and NYSE

Special thanks to:  
**Publishers Printing Co.**  
*printing*  
**United Mail, Inc.**  
*distribution*