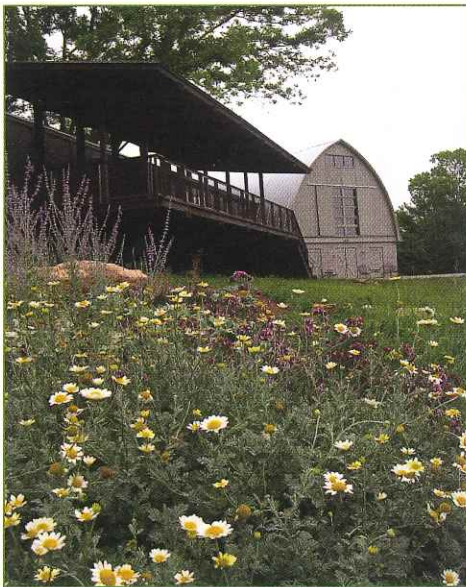


# The Castle Chronicles

SUMMER 2008



Rosa Carefree Sunshine™



## YEW DELL AND BOONE GARDINER TO HOST GREEN GARDENING WORKSHOP

Yew Dell will be the place to be on August 23<sup>rd</sup> for all gardeners and non-gardeners alike who are searching for ways to make their gardens greener. It is not that we assume your yards and gardens to be barren wastelands of brown tumbleweed and scorched earth. Rather we think most gardeners would love some tips for plantings that require less input of time, energy and all sorts of resources, while leaving a little lighter footprint on the planet.

Our day-long workshop will include lectures, demonstrations and walks around Yew Dell, all designed to send you home with a few straightforward tips on more sensible and sustainable design, plant selection and management, pest control and more. The best part of the entire program is that these tips will help you create better gardens while saving time and money and reducing negative environmental impacts.

As our program partner, our friends and neighbors at Boone Gardiner Garden Center are helping to pull off this super event. They've even cooked up a special reception at the Garden Center following the workshop, just for program attendees. See the Yew Dell website and the listing on page 4 for more information, then put this event on your calendar!

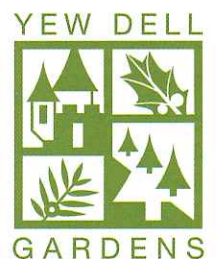
## GORDON HAYWARD AND DRY STONE CONSERVANCY TO HEADLINE SEPTEMBER 20<sup>TH</sup> STONE WORKSHOP

All great gardens have great stone work... while there are few absolutes in the garden world, this one is hard to refute. So Yew Dell has teamed up with two of the best in the business to help you design and create great stone work for your own garden. Celebrated garden designer and author Gordon Hayward is one of the best garden speakers in the US and has authored two outstanding books on stone in the garden. He will offer a Saturday morning lecture that is sure to be a hit. The Dry Stone Conservancy will add to the event by offering a two day (September 19 & 20) workshop on stone wall construction techniques. Other stone artisans and contractors will be on hand all day on September 20<sup>th</sup> with materials, ideas and pointers. See the program listing page and Yew Dell's website for more information.



### Our Mission:

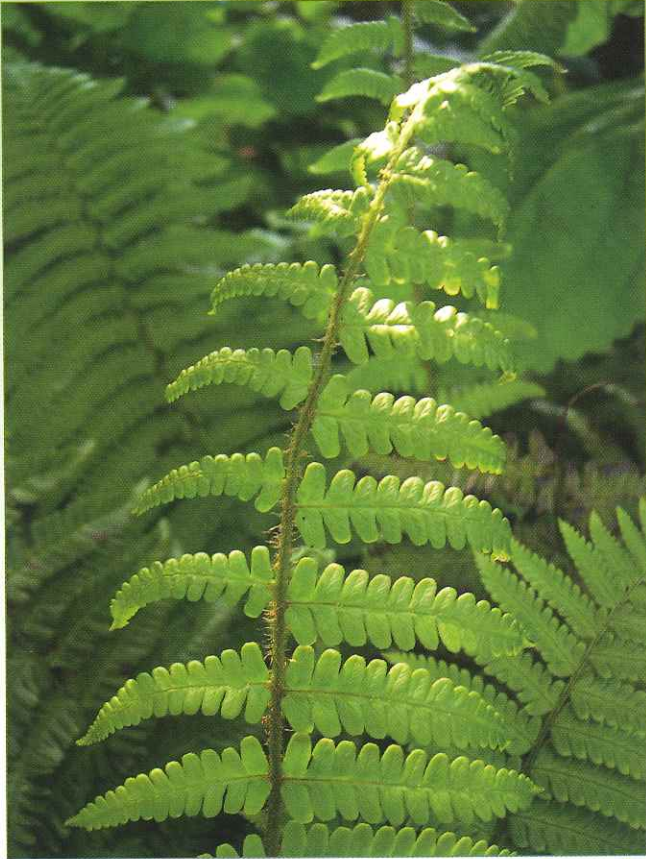
*The mission of Yew Dell Gardens is to continue the horticultural legacy of Theodore Klein; to encourage exploration of the arboretum, gardens and the extraordinary architectural setting; and to provide opportunities for education, enrichment and enjoyment.*





# Director's Letter

## ARE WE THERE YET...?



*Dryopteris affinis*

In the five plus years since I started at Yew Dell, we've talked more about master planning than just about anything else. Over that time, most of our significant strategy meetings eventually worked around to the same question, "when are we going to start our master planning?" Of course a master plan is the institution's major effort to lay out the organization's foreseeable future and how we want Yew Dell to develop over that time; how the gardens will evolve, where to add more parking, how to enhance the visitor experience, how to support our growing research and new plant work, and about a million other things.

When are we going to be there—to the point that master planning makes sense? Well, since you asked, I'm delighted to announce that we've finally arrived. For the last few months, we've been working with a fantastic group of staff, volunteers and board members, all lead by the gargantuan talents of Ross Primmer and Roberto deLeon, the stellar architects of our wonderful Gheens Barn and Peyton Samuel Head Trust Pavilion. We look forward to an equally fabulous process and an inspiring result. We'll be calling on some of you for input, advice and comment, so be prepared! And if you have any thoughts you'd like to share on how you think we can continue the success of this wonderful botanical garden, please give me a call or drop me an email. I'd love to hear from you.

Happy Gardening!

*Paul Cappiello, PhD*  
Executive Director

## THE PERFECT GIFT

*Why wait to leave a legacy behind in the gardens?  
Enjoy your bench or chair today!*

*Yew Dell has the ideal gift that will  
last a lifetime and beyond.*

*This summer, consider a  
Legacy Bench or Chair to honor  
those important people in your life!*

*Call 502.241.4788 for details.*



*Iris 'Lady Vanessa'*  
*Hydrangea quercifolia 'Little Honey'*



## SUNKEN GARDEN VOLUNTEERS PICK WINNERS AND LOSERS

As most of you likely know, Yew Dell has been the recipient of some long time and very talented help in the Sunken Garden. Starting in 2004, a group of die-hard members of the Oldham County Master Gardener's Association and the Green Thumbs Garden Club, have tirelessly planted, divided, dug up, weeded, and taken notes on all the plants in the garden. They work one morning a week throughout the gardening season to help us keep the garden looking great and to evaluate the tremendous diversity of plants in the garden. Eventually we hope to have either a brochure or a web page devoted to a summary of all the plant performance in the Sunken Garden.

We asked our volunteer crew to make a list of some of their picks and pans based on plant performance over the last few years. Here's a few of their thoughts...



*Decumaria barbara*



*Pulsatilla vulgaris* 'Fringed Petals'



*Sedum rupestre* 'Angellina'



*Daphne x burkwoodii* 'Gold Dust'



*Hypericum olympicum*

### Winners

*Decumaria barbara*; a fabulous SE North American native member of the hydrangea family, is a rather slow growing woody vine with bright glossy green leaves and late spring, white powder-puff flowers. It is a fabulous selection for a lightly shaded spot in your garden.

*Acorus gramineus* 'Minimus Aureus'; this dwarf gold sweet flag is a delightful plant for a shady garden. Growing only a few inches tall and about 6-10" wide, the fine textured yellow-green foliage is a delight. It works well in a range of soils and even makes a nice little container plant.

*Pulsatilla vulgaris* 'Fringed Petals'; An early spring favorite in the rock garden, the Pasque Flower forms a 12-15"-tall mass of fringed and fuzzy foliage, topped with deep reddish maroon flowers. The entire plant screams "fuzzy" and is one of those that just has to be stroked to be appreciated. Good for bright sun or part shade.

*Daphne x burkwoodii* 'Gold Dust'; while daphnes can be a bit trying, this one has been a winner. Gold-edged leaves and a compact 4'x4' habit combine with intensely fragrant pale pink spring flowers to offer season-long impact.

*Sedum rupestre* 'Angellina'; while this one can be a little aggressive, it is a great selection for any place where hot, sunny and dry are the name of the game. Brilliant yellow-gold foliage on a low creeping plant make this a great selection for sunny borders and even in containers.

*Sedum reflexum*; there are so many sedums out there, where does one start... or stop!? This little guy has been one of the real standouts, bearing bluish-grey foliage on a plant that creeps about the garden, never getting more than a few inches tall. This one loves the sun but will take a little shade as well.

*Hypericum olympicum*; there are piles of St. Johnsworts but this one we love. Tiny blue-green leaves carpet the ground and bear early summer flowers of bright

yellow. The Yew Dell form has flowers of a soft buttery yellow.

*Campanula porscharskana* 'Blue Waterfall'; appropriately named, this low growing plant (up to 12" tall) just flows over the rocks with excellent clean foliage and masses of purple flowers in late spring and early summer: an excellent selection for sun or part shade.

A few pans... (or at least a few that just haven't gotten the job done for us): *Saponaria pulvinaris*, *Saxifraga x* 'London Pride Variegated', *Euphorbia characias* 'Portugese Velvet Strain' (but it is so cool, we'll have to try again!), *Daphne x medfordensis* 'Lawrence Crocker' (same for this one; well worth another try!), *Globularia spinosis*, *Dianthus alpinus* 'Dark Nipples', *Armeria maritima* 'Little Penny', *Empetrum nigrum* 'Compass Harbor' (usually likes a soil pH of about 4.0—which we don't have!)

This year, plan to come pay the sunken garden a visit to pick some of your own winners.



# Upcoming Garden Educational & Events

## WOODY PLANT IDENTIFICATION WORKSHOP

Last year's all-day workshop was such a hit, we decided to do it again. This workshop is the perfect place for gardeners and professionals of all levels to brush up on their plant ID skills. Extensive time out among Yew Dells diverse plant collections will provide ample opportunity for discussions about ID features, cultural requirements, comparison of cultivars and more.

**Thursday, July 10; 9am-3:30 pm**  
Cost; \$45/\$55 members/nonmembers (includes lunch)

## HUMMINGBIRD WORKSHOP

Hummingbird Workshop sponsored by Dr. JB's Clean Feeder. Come spend an afternoon learning the tricks of the hummingbird feeding trade. Chris Whelan of the JB's Clean Feeder company will share his years of experience in attracting and feeding hummers. Nationally recognized hummingbird photographer Russ Thompson will provide tips for capturing that perfect snapshot. And if the little guys are cooperative, Brainard Palmer-Ball will conduct a hummingbird banding demonstration.

**Saturday, August 16, 1 – 3 pm.**  
Free with regular admission

## GREEN GARDENING WORKSHOP

This is a perfect opportunity to pick up some outstanding tips for improving the environmental footprint of your garden. From selection of pest resistant plants to green roofs for your potting shed, new composting products, and low-polluting fertilizers, we'll get you on the road to more sustainable gardening. You won't leave the day-long program a 100% organic gardener, but it will get you going in the right direction!

**Saturday, August 23, 9am-4:30 pm**  
Cost; \$55/\$65 members/nonmembers (includes lunch)

## STONE WORKSHOP FEATURING GORDON HAYWARD LECTURE AND DRY STONE CONSERVANCY CLASS

Friday and Saturday, September 19 and 20 will see a host of stone work going on at Yew Dell. Take advantage of this opportunity to hear and learn from some of the best in the country! In addition to the specific opportunities below, we'll have on hand a host of stone experts and vendors from the area to show off stone, stone benches and other products and to demonstrate their techniques. Enjoy these three great happenings held over two days.

Stone demonstrations and exhibits by local contractors, designers, and vendors.  
**Saturday, September 20, 10 am – 3 pm**  
Free with regular admission

## GORDON HAYWARD LECTURE

*Making the Garden with Stone* – This will be a great chance to hear one of the very best, talk about using stone to greatest impact in your garden. From small accents to more ambitious ventures, all will go home with a greater appreciation for stone in the garden and a list of projects to tackle.

**Saturday, September 20, 10 - 11 am**  
\$25/\$35 members/nonmembers

## DRY STONE CONSERVANCY HANDS-ON WORKSHOP

The Conservancy has earned an international reputation for preserving the heritage of dry stone work and also for passing along that heritage to all with an interest. This two-day workshop will be truly a hands-on experience as attendees will work with experienced Conservancy craftsmen to build a dry stone wall at Yew Dell

**Friday and Saturday, September 19 & 20**  
For registration information, go to the Dry Stone Conservancy website at [www.drystone.org](http://www.drystone.org)

## SEED WORKSHOP

Growing plants from seed is one of the great joys of gardening, and this session will be a great chance to learn the finer points of seed collection, processing, handling and germination. We'll collect seeds of a wide range of woody and herbaceous perennial plants from Yew Dell's gardens and grounds and run them through the process. All will go home with a healthy collection of seed and all the information needed to make new plants for next year and beyond.

**Wednesday, October 1; 6 – 8 pm**  
Cost; \$25/\$35 members/nonmembers

## TWILIGHT IN THE GARDEN

Don't miss Yew Dell's sixth annual event in the gardens. The planning committee has been hard at work throughout the year to plan a wonderful evening that will include cocktails and dinner, silent and live auctions and a chance to mingle with friends in one of the most delightful settings in the area, while supporting the continued growth and success of all that is Yew Dell Gardens. Individual tickets and tables of 10 are available but get your tickets soon—they are expected to sell out quickly... as they always do! Call the Yew Dell office for ticket information.

**Wednesday, October 10; 6 pm**

## GARDEN GEEKS II

Garden Geeks I was a huge hit this past winter so be sure to sign up for the limited spaces available for our second installment. This time around, we'll go below ground and study plant roots and root/soil interaction. Join Yew Dell Executive Director Dr. Paul Cappiello as he takes the group through his own research on root development, the unique physiology of plant root systems and a whole lot more. Whether you are a beginner or professional, this series will help you get to the "root" of so many gardening woes – and will help you develop a better understanding of the plants you grow.

Four consecutive Thursday evenings; **October 23 and 30, November 6 and 13; 6:30 - 8:30**  
Join us for our famous Yew Dell soup at 6 pm!  
Cost; \$45/\$55 members/nonmembers



Happy shopper Margie Schubert filling her tray at Pemberton's Greenhouses during Yew Dell's May trip to the Lexington area. All came home with a huge haul of great plants.

To register, visit: [www.yewdellgardens.org](http://www.yewdellgardens.org),  
or call 241.4788

Advanced registration required for all charge events



## NEW ENTRANCE GATES GRACE YEW DELL'S GROUNDS

If you've not been to Yew Dell recently, you will have missed a stunning new addition to the grounds. Yew Dell's entrance is now graced by a set of monumental new gates, designed by Ross Primmer and Roberto deLeon of deLeon and Primmer Architecture Workshop in Louisville. Taking the lead from Yew Dell's yew (*Taxus*) motif, the gates have added to the entrance a great touch of Yew Dell style. deLeon and Primmer have been involved with Yew Dell since they first started work on rehabilitation of the Gheens Barn and design/construction of the Peyton Samuel Head Trust Pavilion. The design and purchase of the new gates was supported by generous donations from Mr. Owsley Frazier and Mr. and Mrs. Harry Bounnell.



Workers at Independent Steel Company of Brooks, Ky. fabricating the support structure for Yew Dell's new entrance gates. The gates were designed by deLeon and Primmer Architecture Workshop in Louisville, also designers of Yew Dell's award-winning bank barn and pavilion.



## MEMORIAL/ HONORARY DONATIONS

January 1 – April 30 2008

IN HONOR OF  
Oldham County Educational Foundation  
Anonymous

Robbie and Duncan Cooper  
Mr. and Mrs. Alan Bowles

Sylvia Jaegers Birthday  
Ms. Julie Ballard  
Mr. and Mrs. John Dougherty  
Ms. McCall Eng  
Mr. and Mrs. Larry Ensor  
Mr. and Mrs. Chuck Hutchison  
Ms. Carol Jackson  
Mr. and Mrs. Stephen Klein  
Ms. Heidi Margulis  
Mr. and Mrs. Charles L. Owen  
Mr. and Mrs. Steven Ragan  
Mr. and Mrs. Gordon Ragan  
Mrs. Ann Rankin  
Ms. Dorothy Ridings  
Ms. Mason Rummel  
Ms. Jessica Schumacker  
Ms. Louise Shulman

Rosemary and Lee Kirkwood  
Mr. and Mrs. Paul Tipton  
Mr. and Mrs. Orm Gudmundsson

Margaret Kulp  
Glenview Garden Club

William G. Lussy  
Mr. and Mrs. George Stablein

Mike Mattingly  
Mrs. Robert Rounsavall

## MEMBERSHIP

Yes, I want to show my support of Yew Dell Gardens by becoming a member today.

- Virginia Bluebells (\$25/single membership)  
 Silver Cloud (\$35/family membership)  
 Weeping Katsura (\$100 - \$499)  
 Golden-Berried Holly (\$500 - \$999)  
 The Dell Society (\$1,000 & above)  
 Other Donation  
 Contact me about volunteer opportunities at Yew Dell

PLEASE MAIL YOUR  
MEMBERSHIP TO:  
YEW DELL GARDENS  
P.O. BOX 1334  
CRESTWOOD, KY 40014

Total Contribution \$ \_\_\_\_\_

Name \_\_\_\_\_ Phone \_\_\_\_\_

Address \_\_\_\_\_ City \_\_\_\_\_

State \_\_\_\_\_ Zip \_\_\_\_\_ Email \_\_\_\_\_

Method of Payment:  Personal Check  MasterCard  Visa Exp. Date \_\_\_\_\_

Card Number \_\_\_\_\_ Signature \_\_\_\_\_

There is a full schedule planned for the coming year from classes and plant walks to garden trips, family fun events and more. And the only way to stay on top of it all is by becoming a member. Remember that Yew Dell members receive generous discounts and offers at many of the best garden centers in the area. Just one trip to the garden center could pay for the year's membership. Of course it is also our membership support that helps us continue to grow and offer some of the best programming and plants in the region.



# YEW DELL VOLUNTEERS

## CURATOR SPOTLIGHT



*Caryopteris x clandonensis* "Dark Knight"



*Caryopteris x clandonensis* "Worcester Gold"

Nanette Dietmeyer has been a faithful Yew Dell volunteer for more than 2 years, and in that time, has worked as a hydrangea curator, tour guide, plant sale helper and about everything in between.

For 2008, Dietmeyer has taken up a new project; curator of the *Caryopteris* collection. *Caryopters*, or blue mist shrub, is a group of species and hybrids that generally make excellent plants for hot and sunny locations. These modest-sized summer bloomers add great foliage and mostly blue flowers to the mixed border. Nanette will be helping Yew Dell staff propagate, grow and evaluate a wide range of cultivars over the next several growing seasons. In time, we may even expand the project to breeding and selection of new forms for the garden world. Stay tuned for future reports on this project. And if you think you'd like to be a volunteer collection curator, give us a call. It is a great way to learn a new group of plants – just ask Nanette, our newest hydrangea expert!

## YEW DELL ADDS THREE NEW BOARD MEMBERS

**E. Neal Cory** - Mr. Cory is currently Senior Executive, Financial Consultant with more than 30 years of service with Hilliard Lyons in Louisville. He has been an active civic volunteer having served on numerous local and national boards including Washington and Lee University National Alumni, Kentucky Country Day School, Historic Homes Foundation, Kentucky Council on Economic Education and the Kentucky Lacrosse Association.

**Jennifer Powell** is the Associate Brand Manager for Jack Daniel's Family of Brands. She is a graduate of the University of Alabama with a Bachelor of Sciences degree in Public Relations and a Master's of Arts degree in Marketing. She has been employed with Brown Forman Beverages Worldwide based in Louisville, KY since 2003.

**Stephen Stowers** is currently Senior Advisor and Vice President of PNC Wealth Management. His professional credentials include 10 years as CPA with Coopers and Lybrand, CFO stints with two Louisville Corporations and three years as Financial Advisor with Merrill Lynch. Mr. Stowers has served on the Kosair Children's Hospital Foundation board and on Rotary International's Saving Lives Worldwide Committee.

We are fortunate to have attracted these three talented individuals to the Yew Dell board and look forward to working with them in the future.

## PUT THESE UPCOMING VOLUNTEER ACTIVITIES ON YOUR CALENDAR...

*Volunteer Work Days, the second Saturday of every month; 9 am - noon*

July 12

August 9

September 13

*Volunteer Pot Luck; noon – 3 pm, September 13*

*Come to the September work day and stay for a great volunteer event. Join your fellow volunteers and Yew Dell Staff for a pot luck get-together in the gardens. We'll enjoy a picnic lunch and then take a hike through the woods below the castle, to the Yew Dell pond that so few have had a chance to enjoy. This will be a fun way to get a look at a piece of land that we hope to develop into a series of teaching spaces and interpreted nature trails. More details to come through the website and our email newsletter.*



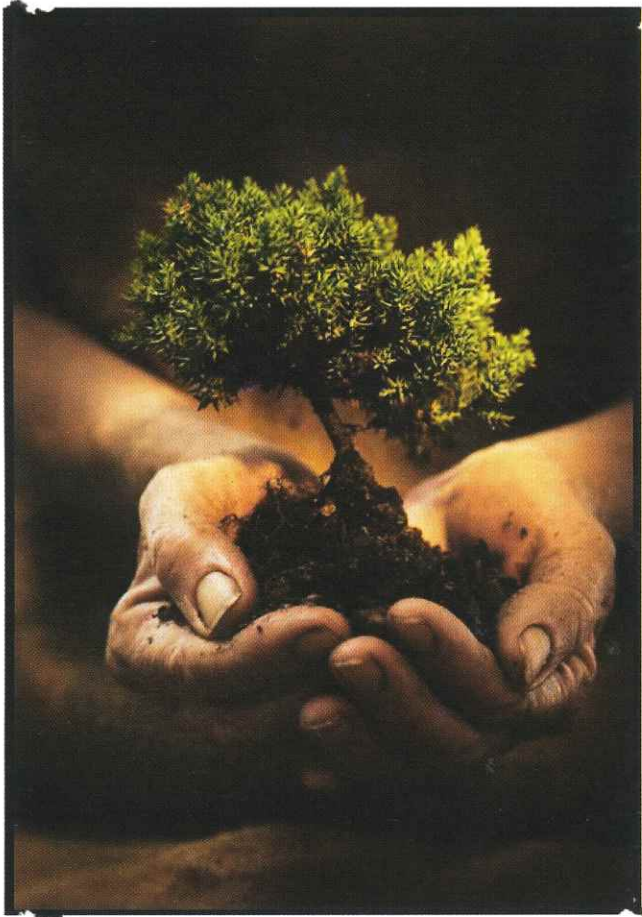
*Sunken Rock Garden volunteers recording plant performance information. Pictured left to right are Ruth McBride, Bev Smith, Ann Corts and Becky Scarboro. Their work is leading to an eventual publication or web page on the performance of all the plants tested in the rehabilitated rock garden. See page 3 for a short list of some of their best and worst from the first few years of plant evaluation.*



*Volunteers tending the Bloom Garden below the Castle. Join Yew Dell's corps of volunteers who work in the garden the second Saturday of every month, 9 am - noon. If weekdays work better in your schedule, just call volunteer coordinator Bonnie Heaton, and she'll be delighted to schedule a convenient time.*

Yew Dell would like to acknowledge the generous support of Mr. Tom Williams of Stoll Keenan & Ogden, Louisville Ky.





Plant a tree in your world this fall...



6300 Old LaGrange Rd. • 502-243-3832 • boonegardiner.com

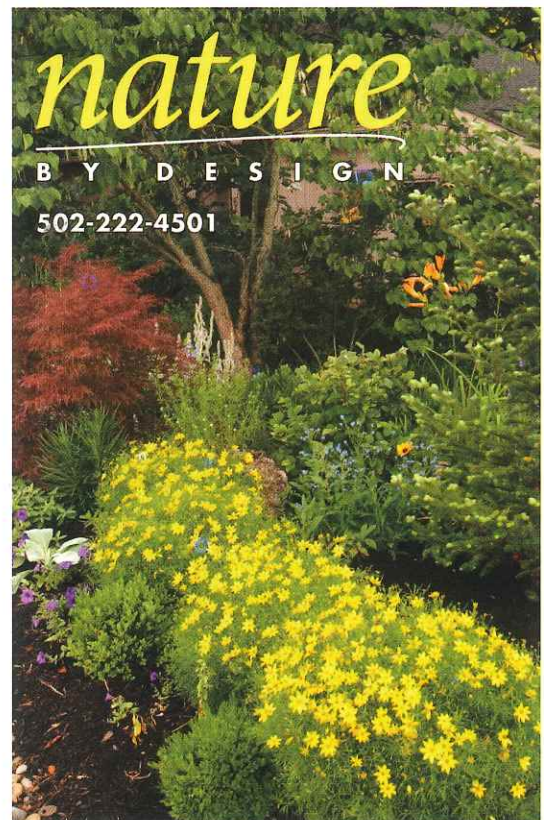
David S. Whitty  
*Vice President/Investments*

(502) 420-3247  
 4969 U.S. Highway 42 • Suite 1000  
 Louisville, Kentucky 40222

**STIFEL NICOLAUS**  
*Investment Services Since 1890*

Stifel, Nicolaus & Company, Incorporated  
 Member SIPC and NYSE

The logo for Beechwood Trees &amp; Gardens features a detailed illustration of a branch with several green, serrated leaves. The text "Professional Services" is at the top in a serif font. Below it, "Landscaping" and "Tree care" are listed in a red serif font. "Call 241-0471" is in a black serif font. The company name "Beechwood Trees &amp; Gardens" is in a red serif font, with "Trees &amp; Gardens" in a smaller size. To the right, "Since 1988" is written in a black serif font.







*Sculpture in the Dell exhibit  
continues through July 26.  
Don't miss this opportunity to enjoy  
Great Gardens and fine art together  
at Yew Dell!*



*Hydrangea quercifolia 'Little Honey'*

Yew Dell Gardens is a partnership project of the Garden Conservancy, a national, non-profit organization founded to help preserve America's exceptional gardens.

## Staff

DR. PAUL CAPPIELLO

Executive Director

KARLA DROVER

Assistant Director

JENA WALKER

Director, Development & Marketing

BONNIE HEATON

Volunteer Coordinator

JOANNE FISCHER

Gardens Manager

DON HIGHTCHEW

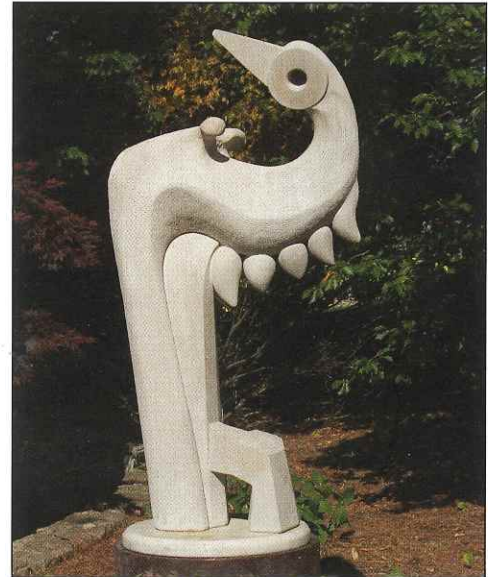
Buildings & Grounds Manager

IRIS GOODE

Development Associate



*Cougar* © 2008 Meg White (Indiana Limestone)



*Transition Bird* © 2008 Matt Weir (Indiana limestone/steel)

## The Castle Chronicles

**YEW DELL, INC.**

6220 Old LaGrange Road  
Crestwood, KY 40014

### OPEN HOURS

April through November:

Monday - Saturday 10 a.m. - 4 p.m.

Sunday noon - 4 p.m.

December through March:

Monday - Friday 10 a.m. - 4 p.m.

**(502) 241-4788**

Special thanks to:  
Publishers Printing Co., printing  
United Mail, Inc., distribution

NON PROFIT ORG  
U.S. POSTAGE  
PAID  
Louisville, Ky.  
PERMIT #879