

Fall 2005

The Castle CHRONICLES

www.yewdellgardens.org

UPCOMING LECTURE BY GORDON HAYWARD

International landscape designer Gordon Hayward will help Louisville-area gardeners learn how to create personal landscape designs in Yew Dell's fall lecture.

In his slide-lecture presentation, "Your House, Your Garden," Hayward will show how a gardener's very own home can help design the most attractive garden for a particular site.

Hayward will present 80 slides to illustrate how house doors, windows, building materials and dimensions offer valuable clues to guide a homeowner's decisions on designing the gardens to surround it. According to Hayward, doors give rise to paths, terraces and sight-lines, then windows frame views of those paths and gardens. Initial design ideas from the house then join with those generated by an existing terrace or deck, a garage or even driveway edges to help create a coherent landscape plan that links house to garden. Hayward also provides ideas for dealing with visual interruptions such as air-conditioning units, cellar door bulkheads or propane tanks.

Hayward brings decades of experience to his landscaping projects. The author of six books and over 50 Horticulture magazine articles on home garden design, Hayward uses his homes in Vermont and the Cotswolds region of England as his living design laboratories. He has shared his expertise through lectures at the Boston Museum of Fine Arts; the New York Botanical Garden and the New York Horticultural Society; the state landscape associations of Minnesota, Kentucky, Idaho, Massachusetts, Vermont and New Hampshire; as well as Cornell University, Penn State University, the University of Idaho and Swarthmore and Villanova universities.

continued on page 5

Yew Dell Sponsors Horticulture Magazine Symposia

Yew Dell Gardens has been selected to be one of three nationally prominent horticultural landmarks hosting Horticulture magazine's 2005 garden symposia.

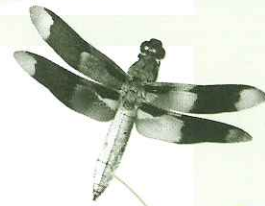
Yew Dell will join Maryland's Brookside Gardens and the Elm Bank Horticulture Center in Massachusetts to serve as sponsors for international experts in "Crafting the Artful Garden: How to Edit, Select, and Plant for the Elusive Four-Season Paradise."

The three Horticulture magazine seminars will feature Yew Dell executive director Paul Cappiello as well as British garden writer Carol Klein, former Horticulture magazine editor Thomas C. Cooper, New York Botanical Garden teacher Judy Glattstein, and international garden designer Nan Blake Sinton.

continued on page 5



Paul Cappiello, Executive Director



mission

THE MISSION OF YEW

DELL GARDENS IS TO

CONTINUE THE

HORTICULTURAL LEGACY

OF THEODORE KLEIN;

TO ENCOURAGE

EXPLORATION OF

THE ARBORETUM,

GARDENS AND

THE EXTRAORDINARY

ARCHITECTURAL SETTING;

AND TO PROVIDE

OPPORTUNITIES FOR

EDUCATION, ENRICHMENT

AND ENJOYMENT.

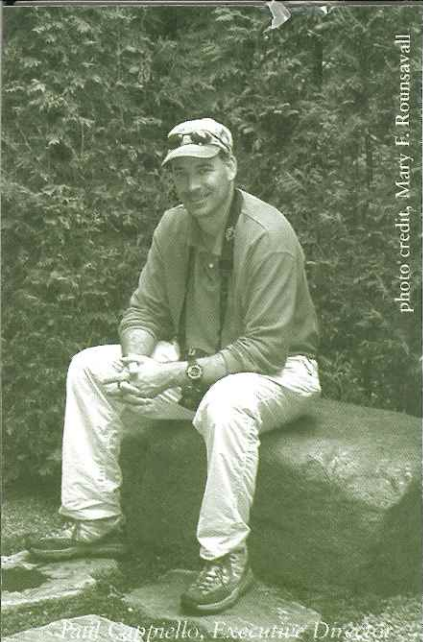
YEW DELL, INC.

P.O. Box 1334

Crestwood, KY 40014

(502) 241-4788

www.yewdellgardens.org



Paul Cappiello, Executive Director

One of the great benefits of finishing the writing and having a book finally published, aside from having a bit of my life back for a change, is the ensuing travel opportunities that the dogwood book has created. It has always amazed me how the fashioning of one's opinions between two hard covers renders the writer an expert on the subject. Those who know me best might suppose that my opinions are stronger than my command of the subject! But be that as it may, the book has provided many opportunities for travel to great cities and gardens, and chances to meet and talk with some great gardeners.

An early July trip to the Philadelphia area brought a chance to visit the incomparable Mt. Cuba Center in Greenville, Del. The former estate of Mr. and Mrs. Lammott du Pont Copeland, this fabulous tract of land has been developed into the nation's finest collection and display of native piedmont flora. The Center has had the good fortune to be run by two of the nation's finest plantsmen, first director Dr. Richard Lighty, and current head Rick Lewandowski, a plantsman's plantsman. Mt. Cuba has continued to collect, document, introduce and display outstanding native plants. Some of the outstanding introductions include *Aster laevis* 'Bluebird', which I first grew in my Maine garden, the yellow-stemmed and creamy variegated *Cornus stolonifera* 'Silver and Gold', star of the late summer border *Solidago sphacelata* 'Golden Fleece' and *Eupatorium rugosum* 'Chocolate' among others. Majestic *Liriodendron tulipifera* specimens abound in the woods. A chance encounter with a specimen of *Persia palustris* (or was it *P. borbonia*?) provided an impromptu plant quiz – I missed it!

The displays of native wildflowers at Mt. Cuba are legendary. Through the North American Plant Collections Consortium, they hold the national collections of both *Hexastylis* (formerly *Asarum*) and *Trillium*. Their spring open days are a must.

One of the absolute standout gardens in the U.S., that I was fortunate enough to visit twice this summer, is Chanticleer, in my mind, one of the most creative and aesthetically energetic public gardens anywhere. Under the brilliance of expert gardener and plantsman Bill Thomas, Chanticleer's staff continues to wow visitors with outstanding plant combinations and stunning design. From expertly crafted gardens, to exquisite handmade (staff made, that is!) garden furniture, iron work and garden sculpture, they seem to just do it all.

Among the tropical containers, endless *Tillandsias* and Cape bulbs, I found *Stictocardia beraviensis*, a striking tropical vine with electric red and orange blossoms, and a beautifully espaliered *Cornus kousa* 'Miss Satomi' (How could I miss the dogwood!) and a couple of excellent specimens of *Cotinus coggygria* Golden Spirit, the yellow leafed smoke bush. This is a garden not to be missed.

Dr. Paul Cappiello
EXECUTIVE DIRECTOR

BUSINESS AND PROFESSIONAL WOMEN OF OLDHAM COUNTY



Moonlight IN THE GARDEN

GHEENS BANK BARN

Yew Dell Chosen as Recipient of Fall Ball Proceeds

The Business Professional Women of Oldham County have selected Yew Dell Gardens to receive the proceeds from their annual fundraiser, The Fall Ball. The BPW, in addition to providing a discussion forum and support network for working women, also makes “enriching Oldham County by supporting and enabling organizations to embrace our community’s needs” part of its mission. The Fall Ball is the organization’s largest project through which they seek to accomplish this objective.

Last year’s event raised \$31,000 for the Oldham County Arts Center and this year’s ball, entitled Moonlight in the Garden, promises to be a wonderful opportunity for Yew Dell not only to raise funds but also to raise awareness of our grounds, mission, and projects.

The persistent dedication of our staff, board, volunteers and supporters has forged Yew Dell’s reputation as a historical and horticultural landmark and this footing is what made us stand out as an applicant. Said Fall Ball Chairperson Patty Gibson, “This is a unique opportunity for BPW/OC to work with a group that not only provides education and research for our community, but one that is recognized nationally and internationally for excellence.”

We’re proud that BPW considers us an educational and cultural asset to Oldham County and hope that you will join them at the Fall Ball 2005 in supporting our plans for a better Yew Dell and in turn, an enhanced Oldham County.

Moonlight in the Garden will take place on Saturday, November 19th at the Seelbach Hilton. The elegant and exciting evening of auctions and delectable cuisine will be set to live music by Leo Night and The Moonlighters. Tickets are \$100 each and corporate sponsorship is available starting at \$1,000 for a table of eight.

For more information on tickets, sponsorships or donations, please contact Patty Gibson at (502) 592-0565 or email us at fallball@bpwoldhamco.org.



Twilight in the Garden Gala

Yew Dell Gardens was glowing in June at the Twilight in the Garden Gala.

Co-Chairs Rosemary Kirkwood and Jamie Swyers planned a very memorable evening for the 300 guests, who strolled through the garden spaces to enjoy an evening of exceptional cuisine by The Silver Spoon, accompanied by a beautiful string quartet. The newly restored house, castle, log cabin and tobacco barn where on display, as well as the conceptual plans for the Gheens Bank Barn. The historic bank barn is being transformed into a state-of-the-art educational center.



Chairs Rosemary Kirkwood and Jamie Swyers



Board President Mary Rounsavall and Phillip Koenig



Kathy Cappy, Brooks Bower, Paula Grisanti, Karen Sales

Open House and Plant Sale

Yew Dell's second annual Open House and Plant Sale chaired by Mary Anne Thornton was packed with creative gardening tips. The event offered the sale of rare plants and uniquely planted containers. The family-friendly event also featured vendors, free gardening advice from noted experts and expanded children's activities.

The open house and gala was a winning combination for Yew Dell, netting nearly \$60,000. Proceeds from the event will fund the operating budget and Yew Dell's educational programs.



Rosemary Kirkwood, Patsy Harkess and Open House Chair Mary Anne Thornton

continued from cover

LECTURE BY GORDON HAYWARD

Hayward's November 12 lecture will take place at 10 a.m. at St. Francis in the Fields Episcopal Church, 6710 Wolf Pen Branch Road. Tickets may be purchased at the door, however, reservations are required by calling 241-4788 or email: lynnef@yewdellgardens.org. The cost of the lecture is \$10 for members, \$15 for nonmembers.

The lecture is co-sponsored by Yew Dell Gardens, Glenview Garden Club, the Garden Club of America and the Louisville Nursery Association.



YEW DELL, INC. BOARD OF DIRECTORS

Mary Rounsavall- President
Rosemary Kirkwood - Vice President
June Ezman- Secretary
David Whitty- Treasurer
Mary Broecker
Sue Brown
Holly Cooper
Bob Griffith
Louise Hickox
Robert E. Kulp, Jr.
Blair Matthews Louis
Rob Nunnelle
Phil Payne
Michael L. Smiley, ASLA
Roy K. Snell
Jamie Swyers
Mary Anne Thornton
Marianne Welch
Suzette White

Castle
5

Crafting the Artful Garden

how to edit, select, and plant for the elusive four-season paradise

continued from cover

Yew Dell Sponsors Horticulture Magazine Symposia

In the full-day session to be held in Louisville on October 15, the five speakers will discuss the art and the reason for skillful garden editing, which becomes particularly evident late in the season when even the best design can disappear into a confusing jungle of plants, colors and shapes. International horticulture experts will share their techniques for displaying plants, and show how to weave layers of bulbs, trees, perennials and borders into a four-season showplace.

Yew Dell, by hosting one of Horticulture magazine's symposia, joins a privileged group. This year's other two programs are at the Elm Bank Horticulture Center, a 36-acre horticulture and education center that is the headquarters of the Massachusetts Horticultural Society; and at Brookside Gardens in Maryland. The 50-acre Brookside Gardens, outside Washington, D.C., is part of the Maryland-National Capital Park and Planning Commission that encompasses many of the United States' most important monuments and national treasures.

Yew Dell's full-day session will be held at the Brown Hotel in downtown Louisville and is open to the public. The \$129 cost will include lunch. Registrations may be entered on the Horticulture magazine website hortmag.com or by calling 877-436-7764 by October 13.



Volunteer Dottie Lammlein



Volunteer Abi Rennekamp

One of the biggest challenges on the Yew Dell grounds is not pulling weeds (although we have plenty of that to do) but keeping track of all the existing and new plants and their locations. Without accurate mapping and inventory records, we would lose much of the scientific value of the collections – and the lack of this information makes it difficult to direct visitors who come in looking for a particular plant. Fortunately, through the tireless efforts of a few dedicated volunteers, major progress is being made on this tremendous task. Abi Rennekamp and Janet Schweitzer have been working from original inventory data compiled by Paul Clinton of Beechwood Trees and Gardens. When the project is completed, visitors will be able to come to Yew Dell and pick up a copy of the plant inventory and maps and quickly find any plant on the grounds!

Lest our readers (and maybe potential volunteers) think that all Yew Dell's horticulture work goes on outside in the gardens, there is yet another major ongoing project, but this one is for those gardeners who prefer air-conditioned gardening. In addition to being one of our charter tour guides, volunteer Ken Gustafson has taken on the mammoth task of cataloging and organizing Yew Dell's library. Consisting of Theodore Klein's books, others acquired recently and a growing list of current gardening magazines and periodicals, the library will represent an excellent resource for Yew Dell staff and members. While not intended to be a lending library, when ready, the books and magazines will be open for in-house use by Yew Dell members. Why spend hundreds of dollars on dozens of gardening magazines when you can come and read them in the beautiful surroundings of Yew Dell. We'll let you know when it is ready.

With all the horticultural work going on at Yew Dell, it would be easy to miss all the wonderful history that is responsible for this marvelous place. But through the efforts of volunteer Dottie Lammlein, we are keeping those historical ties as tight as ever. Dottie, who researched and authored "History and Families of Oldham County, Kentucky, The First Century 1824-1924," has created a first draft of a Klein family timeline that runs from the 19th century German heritage, all the way to the Kleins who built and inhabited Yew Dell. This valuable information, along with the Stabilization Plan previously drafted by the Garden Conservancy, will be used in a historical interpretive exhibit on the grounds in the future. Dottie is not only a champion for Yew Dell, but through her work in Oldham County, along with her husband, Bill, will be the recipients of the J.C. Chilton Barnett Award as Champions of Oldham County at the Oldham County Historical Society's Prohibition Ball in September. Dottie also is being honored by the Business and Professional Woman of Oldham County's Fall Ball, "Moonlight in the Garden" as the "Woman of the Year."

One of the great benefits of volunteering at Yew Dell is the opportunity to learn from a tremendous array of plants on the grounds. Now, we are offering a new opportunity for those with an interest in learning more about the plant collections. Just recently created, the post of Volunteer Curator will allow an interested volunteer to adopt a particular plant collection and work with Yew Dell staff on the management and interpretation of the collection. Volunteer Curator candidates do not have to be plant experts. The goal of the program is to bring in individuals interested in learning, and involving them in the curation of that collection. Some of the curator's tasks could include tracking bloom time, scouting for insect problems, checking labels and map locations, researching the history or background of the members of the chosen collection. The bottom line is, the only thing you need to bring to the table is interest and enthusiasm. We'll equip you with everything you need to make the journey one of learning and fun. And this is not just in the planning stage. Volunteer Janet Schweitzer has recently signed up to be our first Volunteer Curator – of the Beech collection!

Join us for Saturday work days every second Saturday of the month from 9:00 a.m. - noon.



NATURE BY DESIGN
Designs & Landscapes

1819 Circlevue Drive
LaGrange, KY 40031

Suzette White
Owner

(502) 222-4501



BOONE GARDINER
GARDEN CENTER

Family Owned and Operated Since 1899



A Full Service Retail Garden Center Offering:

-  Garden Design and Installation
-  Louisville's Largest Selection of Outstanding Garden Plants
-  Gift Gallery with a Wide Array of Garden Supplies, Art, and Fountains



16411 Shelbyville Road
Louisville, KY 40245
502.245.0238

Underwriters



Beechwood
Trees & Gardens

241-0471

Horticulture
Arboriculture
Urban Forestry

Paul Clinton
Kevin Klarer
Ben Rickenbacker

Castle

7

David Whitty

Vice President / Investments

(502) 420-3247

4969 U.S. Highway 42 • Suite 1000
Louisville, Kentucky 40222

Stifel, Nicolaus

& Company, Incorporated

Investment Services Since 1890

MEMBER
SIPC

MEMBER
NYSE



Yew Dell Gardens is a partnership project of the Garden Conservancy, a national, non-profit organization founded to help preserve America's exceptional gardens.

2005 UPCOMING TOURS & EVENTS

The calendar at Yew Dell Gardens is bursting with activity. Upcoming tours and events are as follows:

Tours of the Garden

Yew Dell Gardens is open only during scheduled tour times or by appointment.

Tuesdays and Thursdays at noon and 1 p.m.

Second Saturday of the Month (Feb. - Dec.) 10 a.m. - noon

Suggested donation is \$5.00 per person, but free to members.

No tour on Saturday, November 12. Please join us for the Gordon Hayward lecture listed below.

Special Events

OCTOBER 15 Horticulture Symposium - "Crafting the Artful Garden"
Cosponsored by Yew Dell Gardens, Horticulture Magazine and Monrovia
(For more information, see feature story on cover)

NOVEMBER 19 Business and Professional Woman/Oldham County Fall Ball
Proceeds benefit Yew Dell Gardens
(For more information, see feature story on page 3)

Lectures

NOVEMBER 12 Gordon Hayward - "Your House, Your Garden (10 a.m.)"
Cosponsored by Yew Dell Gardens, Glenview Garden Club, a member of the Garden Club of America, and Louisville Nursery Association
St. Francis in the Fields Episcopal Church, Wolf Pen Branch Road and U.S. Hwy. 42
\$10 for members, \$15 for nonmembers
(For more information, see feature story on cover.)



The Castle CHRONICLES

YEW DELL, INC.
P.O. Box 1334
Crestwood, KY 40014

OFFICE HOURS
Mon - Fri 9:00 am to 4:30 pm

(502) 241-4788
www.yewdellgardens.org

Special thanks to these underwriters:

Publisher's Printing Company, printing
United Mail, Inc., distribution

NON PROFIT ORG
U.S. POSTAGE
PAID
Louisville, Ky.
PERMIT #879