

Spring 2005

The Castle CHRONICLES

www.yewdellgardens.org

YEW DELL GARDENS' EXECUTIVE DIRECTOR CO-AUTHORS NEW DOGWOODS BOOK

Dr. Paul Cappiello's amazing new book about one of America's favorite flowering tress, "Dogwoods: The Genus Cornus" has just been released by Timber Press, the world's leading publisher of high-level horticulture books. Co-authored with one of the nation's most respected horticulturists, Don Shadow, "Dogwoods" is being hailed by critics as a must-have for every gardener.



THE MISSION OF YEW

DELL GARDENS IS TO
CONTINUE THE
HORTICULTURAL LEGACY
OF THEODORE KLEIN;
TO ENCOURAGE
EXPLORATION OF
THE ARBORETUM,
GARDENS AND
THE EXTRAORDINARY
ARCHITECTURAL SETTING;
AND TO PROVIDE
OPPORTUNITIES FOR
EDUCATION, ENRICHMENT
AND ENJOYMENT.

mission

DOGWOODS

Paul Cappiello & Don Shadow



continued on page 6

Mike Hayman, Louisville's unofficial tree expert said, "It's an instant classic, because no one has done it before and it's one of the major genera. It is an amazing book and truly a golden opportunity for Paul and Yew Dell."

An accomplished garden designer, lecturer, and photographer, Cappiello formerly served as horticulture director at Bernheim Arboretum and Research Forest in Clermont and as an associate professor of horticulture at the University of Maine. He received his bachelor's degree in environmental planning and design from Rutgers University and his master's degree and doctorate in horticulture from the University of Illinois.

Shadow is owner of Shadow Nursery, a wholesale nursery in Winchester, Tennessee, specializing in woody ornamentals and rare and unusual plants. A University

Celebration — 100th Anniversary of Klein's Birth

July 16 is an important date in Oldham County. It happens to be Oldham County Day, but it also marks the 100th anniversary of Theodore Klein's birth. In memory of this momentous occasion, Yew Dell Gardens is planning a members-only birthday party! The newly renovated Red Tobacco Barn will provide the setting for a traditional old-fashion picnic in the Gardens complete with barbecue and hayrides. Tours of Klein's plant selections will be given and the children can enjoy special activities planned just for kids.

Our celebration will begin by participating in the Oldham County Day parade. Klein's grandchildren and great-grandchildren will climb aboard our float in birthday style. Then at 4:00 p.m. the doors of Yew Dell Gardens will be open for members to enjoy the feast and birthday celebration.

YEW DELL, INC.
P.O. Box 1334
Crestwood, KY 40014
(502) 241-4788
www.yewdellgardens.org



A Message from the President

Castle
2

Yew Dell Gardens has burst into 2005 with a huge surge of activity of all kinds! The long-awaited rehabilitation of our wonderful old bank barn, which will become the Gheens Education Center, is at long-last underway. The failing greenhouses have been removed to make way for installation of a temporary greenhouse, which will be used for plant propagation. Many of the gardens are being revamped and cleaned up, and construction of a new parking area near the red tobacco barn is in progress.

We welcomed two enthusiastic new board members this winter, Marianne Welch and Mike Smiley, and a new development assistant, Bonnie Heaton. Bonnie's presence will allow us to extend our Open Hours each week to Tuesday and Thursday from noon to 2 p.m. This May we will be joined once again by a Yale Intern through the Bulldogs in the Bluegrass program.

Our special events are a real highlight this year! Thanks go to board members Weezie Hickox and Sue Brown, who hosted a members-only cocktail party and book-signing to celebrate the publication of "Dogwoods: The Genus Cornus", co-authored by our own Paul Cappiello with noted Tennessee plantsman Don Shadow. On April 16th, Paul gave a public slide lecture on dogwoods and the book. On May 11th garden expert and owner of Munchkin Gardens, Gene Bush, gave a lecture on rock gardening.

On June 10th we hope you will join us once again for our wonderful "Twilight in the Garden", and on June 12th we'll hold a newer, better version of our Open House entitled "Off the Wall." July 16th, we will celebrate the anniversary of Theodore Klein's 100th birthday with a float in the Oldham County Day parade and a members-only old-fashioned family picnic and birthday party. (So be sure to become a member so you can come!)

We are grateful to so many people for their interest and support! One in particular is Clifton Nicholson, who kindly arranged for Yew Dell to receive part of a collection of art from the estate of Christina Larsen. Sale of some of these pieces will become the corpus of Yew Dell's endowment. Five marvelous glass pieces were sold in March through the Tobin-Hewett Gallery, and other pieces will be featured in our live auction at "Twilight in the Garden".

Mary F. Rounsavall
PRESIDENT

Y E W D E L L , I N C . B O A R D O F D I R E C T O R S

- | | | |
|-----------------------|------------------------------------|-------------------------|
| Mary Broecker | Rosemary Kirkwood - Vice President | Roy K. Snell |
| Sue Brown | Robert E. Kulp, Jr. | Jamie Swyers |
| Holly Cooper | Rob Nunnolley | Mary Anne Thornton |
| June Ezman- Secretary | Phil Payne | Marianne Welch |
| Bob Griffith | Mary Rounsavall- President | Suzette White |
| Louise Hickox | Michael L. Smiley, ASLA | David Whitty- Treasurer |

Enjoy an Evening of Elegant Dining, Mingling with Friends and a New View of The Gardens – 2005 Twilight in the Garden Gala

The second annual Twilight in the Garden Gala, set for June 10, will offer an entirely new view of Yew Dell Gardens.

“This year, everyone will be entering from the parking lot by the Red Tobacco Barn, and they will move through the stations by going the opposite way that people usually take on the walking path,” said Rosemary Kirkwood, who is helping to organize and oversee the Gala. “It will give everyone a new perspective.”

Along with providing the opportunity to enjoy the gardens from a different viewpoint, the Gala will enable guests to see the numerous renovations underway at Yew Dell, including the historic bank barn, which is being converted into an educational and cultural center.

“The bank barn renovations won’t be complete but they will be well underway by then,” Kirkwood said. “This will be a wonderful opportunity for our donors and friends of Yew Dell to see the great strides we’re making.”

Rosemary’s planning is complimented by co-chair this year, Jamie Swyers. Both are working furiously to plan a memorable evening, which will include elegant samplings catered by The Silver Spoon, along with live entertainment, a live auction and a silent auction.

“We’ve got even more fantastic items for this year’s auctions, so guests will have plenty to bid on,” Kirkwood said. “We’re hoping that everyone will want to bid on at least one item, maybe more.”

Along with raising money for Yew Dell, the goal of the Gala is to showcase the renovations and improvements while allowing guests the chance to mingle with old friends and to make new ones.

“One of the things we hope to accomplish is not only to allow guests to see the gardens, but to really have a great time,” Kirkwood added. “Last year’s Gala provided people with a chance to see others from Oldham County and elsewhere that they hadn’t seen lately. Everyone had a wonderful time last year and we’re planning to have even more fun this year.”

Twilight in the Garden Gala

June 10

6:30 p.m.

Yew Dell Gardens

5800 N. Camden Ln.

Crestwood, Kentucky

2005 OPEN HOUSE & PLANT SALE OFFERS “OFF THE WALL” FUN FOR ALL AGES

Whether you are six or 60, Yew Dell Gardens’ 2005 Open House is going to be “Off the Wall” fun for everyone.

Children of all ages and adults will have plenty to do at the Open House on June 12. Along with the chance to enjoy the Gardens’ splendor, guests will have the opportunity to view the latest renovations underway at Yew Dell and to enjoy a variety of activities.

The gauntlet has been tossed! Mary Anne Thornton and committee are off and running to design an exception garden event. One of the highlights for the grownups will be a plant sale and sale of planted containers, designed by noted area horticulturists, gardeners and friends. Last year’s designers container event was such a huge success that it has been expanded. This year’s event, titled “Off the Wall,” will include some truly remarkable compositions.

“Off the Wall” will also host upscale vendors including The Blue Nest, Boone Gardiner Garden Center, Digs, and The Plant Kingdom. This is one stop shopping for all of your gardening needs at its best, plus just taking in the views of the hottest in garden collectibles is worth the visit to Yew Dell Gardens during “Off the Wall.”

And if you need help determining the best plants for your garden, our lecture demonstrations and workshops will be a must. Extension specialist Donna Michael and Shelley Nold, owner of The Plant Kingdom, will offer the trendiest ideas in container planting. And if you have hostas or roses gracing your gardens, experts from both Hostas of Kentuckiana and the Rose Society will be on hand to answer questions.

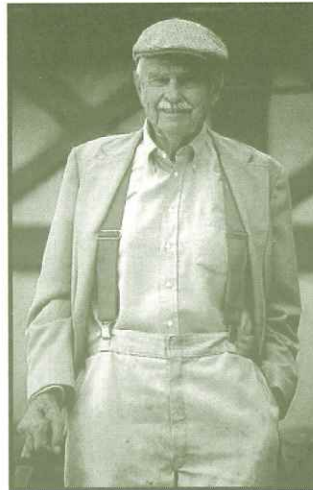
Also offered for the first time, will be a selection of Yew Dell Gardens’ merchandise and a handful of gardening books including Dr. Paul Cappiello’s “Dogwoods: The Genus Cornus.”

For the kids, there will be lots of action in the children’s activities area. There will be scavenger hunts, geared to ages three to eight, and a chance to build a terrarium or a sunflower collage.

So, mark your calendar! “Off the Wall” is scheduled from 1 p.m. to 5 p.m., but if “Yew” are a member, you will get first chance at the plant sale. The doors will open for “yew” at noon. Yew Dell is the perfect place for a weekend of fun with family and friends.

Theodore Klein Plant Awards

Promoting New and Superior Plants for Kentucky Landscapes



Abies nordmanniana
Nordmann Fir

2005

Cercis canadensis
'Appalachian Red'

is one of the very best fir species for the Kentucky landscape. Its dense formal shape, dependable dark green foliage and wide cultural adaptability make the Nordmann Fir a stately lawn specimen. Plants typically grow at a moderate rate to 60-80' tall and 30-40' wide. They perform best in a sunny location with moist soil. Excellent specimens can be seen at Yew Dell Gardens (Crestwood, KY) Cave Hill Cemetery (Louisville, KY), Bernheim (Clermont, KY) and the UKREC Botanic Garden (Princeton, KY). Nordmann Fir is happiest in USDA cold hardiness zones 4-6.

is a stunning new selection of our native redbud. This 20-25' tall tree absolutely explodes with brilliant fuchsia pink flowers in Spring; a much brighter shade than the typical redbud. Most at home in sun to dappled shade, 'Appalachian Red' will adapt to any average garden soil. Specimens can be seen at Yew Dell Gardens, Seneca Park, Bowman Airfield, and Whitehall House and Gardens. Best in USDA cold hardiness zones 5-8.

Castle
4



Quercus bicolor
Swamp
White Oak

is one of our most outstanding native oaks. Growing to 50-60' tall with an upright oval outline, it makes an excellent shade tree specimen and is also useful in street tree and parking lot plantings. This long-lived species is

tremendously adaptable and once established, is tolerant of both wet and dry soils. Summer foliage is a dark glossy green with a bit of yellow in the Autumn. Louisville's Cave Hill Cemetery has some excellent specimens. It is best adapted to zones 4-9.

Hakonechloa macra
'Aureola'
Golden
Japanese
Forest Grass



makes an outstanding bright accent in the lightly shaded garden. Growing slowly to 1' high and 3' wide, the elegantly arching blades are striped in brilliant green and gold tones. This exceptional ornamental grass performs best in a moist soil. Plants can be seen in the walled garden at Yew Dell Gardens. It is most at home in USDA cold hardiness zones 5-9.



The Theodore Klein Plant Awards were created to promote superior plants for the Kentucky landscape. The program is sponsored jointly by the University of Kentucky, the Kentucky Department of Agriculture, the Kentucky Nursery and Landscape Association and Yew Dell Gardens.

For more information on the Klein Awards and for a downloadable version of the 2005 poster, go to Dr. Win Dunwell's UK web site:

<http://www.ca.uky.edu/HLA/Dunwell/TKleinPA.html>

Volunteers — Making a Difference!

On a very cold and snowy day in mid-January, Yew Dell Gardens' hosted it's second annual Volunteer Appreciation Brunch at Waldeck Farm. Having outgrown the Castle, the event was moved to the historic Waldeck Mansion that was generously donated for our use by David Gleason and Helena Grimes Smith. Nearly 100 volunteers braved the cold weather to gather for an afternoon of celebration and recognition.



Lee Squires (right) congratulated Karl Klein (left) who won the "Volunteer of the Year" award for 2004.

The highlight of the afternoon was the "Volunteer of the Year" recognition that was awarded to Karl Klein. Karl has been one of Yew Dell's quietest and most active volunteers working on projects as diverse as planting, pruning, demolition, providing guided tours and participating in oral history work.

Several others got in on the awards as well. Karla Drover received the "Saturday Morning Special" for participating in more Second Saturday work days than anyone – even more than some staff! "Green Ivy" awards were given to Carolyn Breeden, Susan Freepartner and Judy Reibel, who led the Wednesday Weekly Weeders in contributing over 250 hours collectively. The "Freelance" award went to master gardener Leisa Reynolds for her outstanding work in the gardens in all sorts of challenging weather conditions.

Last year more than 450 volunteers contributed over 3,500 hours to help with the stabilization of Yew Dell. Kudos to an outstanding, dedicated group of supporters. From office jobs to garden rehabilitations, Yew Dell would not be moving forward without the energy and talent of this amazing group of individuals.



David and Terri Miller (l-r), Dr. Paul Cappiello and Holly Cooper gathered in the spacious foyer of Waldeck for the second annual Volunteer Recognition Event.

Castle
5



Margaret Kulp (l-r), Jo Anne Fischer and Don Hightchew manned the booth at the Kentucky Landscape Industries trade show at the Kentucky International Exposition Center.

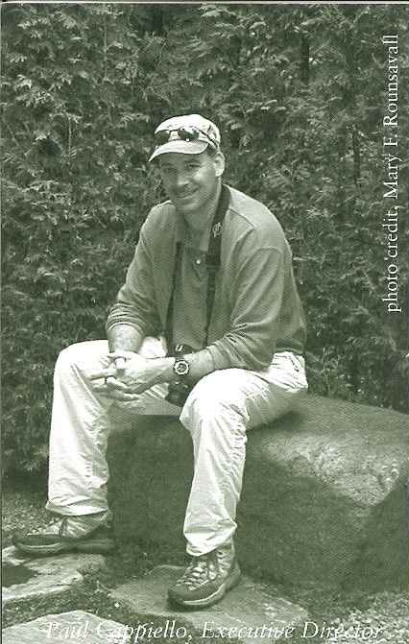


photo credit: Mary F. Rounsavall

Despite the incorrigibly wet weather this spring, we have continued to build on the outstanding horticulture at Yew Dell. Several new planting projects will bring a dizzying array of new and unusual plants to Yew Dell. Plant programs and lectures will add even more reasons to make repeated visits this year.

The Sunken Rock Garden, located adjacent to the castle, is undergoing a major rebirth this spring through the great efforts of both the Green Thumb Garden Club and the Oldham County Master Gardeners. Beginning with their joint adoption of the project last year, members have been working on clearing out overgrowth, mapping, historical research and planning for new work. The new plantings being installed this year will provide a fantastic introduction to the art and science that is rock gardening. A few of the new gems being added are *Epimedium epsteinii* and *E. diphyllum*, several saxifrages, choice daphnes, a green-flowered Rudbeckia and several hardy cyclamen to mention just a few. Come out to see the progress of what is likely to be one of the newest garden highlights on the property.

On May 14 and 15, Yew Dell will host a bonsai show and demonstrations to be staged by the Greater Louisville Bonsai Society. The event will showcase some of the best examples of the art found in the region. For the serious collector, bonsai gardener or the casual observer, this will be an outstanding event. For a thorough introduction to and appreciation of the diverse world of hostas, June 5th will bring Hostas of Kentuckiana to Yew Dell for their annual show to be held in the newly rehabilitated tobacco barn. This will also be an excellent chance to tour Yew Dell's collection of more than 500 hosta varieties, many of which were generously donated by the private collector, Dr. Jerry Meyer.

Finally, spring 2005 has brought to the region, announcement of the new crop of Theodore Klein Plant Award winners. To promote these excellent garden plants, Yew Dell has created a marquis display at Boone Gardiner Garden Center in Louisville. It is hoped that this pilot project will be expanded to other garden centers in the future.

Sorry . . . I'm out of space. You'll just have to come for a visit to see everything else that is going on in the garden at Yew Dell!

Dr. Paul Cappiello
EXECUTIVE DIRECTOR

continued from cover

of Tennessee graduate with a bachelor's degree in horticulture, Shadow is past-president of the International Plant Propagator's Society (Eastern region) and the Southern Nursery Association. Among the honors he has received are the Medal of Honor award of the Garden Club of America (1989), the Individual Commercial Award of the American Horticultural Society (1993), and the Silver Seal Award of the American Federation of Garden Clubs (1994).

To celebrate the release of "Dogwoods," Yew Dell Gardens hosted a lecture and book signing with Paul Cappiello on April 16. If you missed this opportunity, books are still available by calling Yew Dell Gardens.

A colorful hardbound coffee table book with more than 260 breathtaking photos is available to Yew Dell Gardens' members at a special discounted rate of \$35.



NATURE BY DESIGN
 Designs & Landscapes

1819 Circleview Drive
 LaGrange, KY 40031

Suzette White
 Owner

(502) 222-4501



BOONE GARDINER
 GARDEN CENTER

Family Owned and Operated Since 1899



A Full Service Retail Garden Center Offering:

-  Garden Design and Installation
-  Louisville's Largest Selection of Outstanding Garden Plants
-  Gift Gallery with a Wide Array of Garden Supplies, Art, and Fountains



16411 Shelbyville Road
 Louisville, KY 40245
 502.245.0238

Underwriters

RICHARD SCHLECHT

"Orvieto, North End"
 Watercolor



B DEEMER GALLERY

2650 Frankfort Ave
 Louisville KY 40206
 502 896-6687

www.bdeemer.com



Beechwood
 Trees & Gardens



7906 Floydsburg Road
(502) 241-0471

Castle
7

Ladyfingers Catering

FINE CATERING FOR YOUR SPECIAL OCCASIONS

**Named Exclusive Ceterer for Kentucky's
 Top Events 04-05**

1300 Middletown Ind. Blvd. | 245.7734
 WWW.LADYFINGERSINC.COM

Planting Your Future

David S. Whitty

Vice President - Investments

(800) 733-2556 • (502) 420-5365

10350 Ormsby Park Place, Suite 104

Louisville, KY 40223

Advest

Serving Investors Since 1898

www.advest.com

Advest, Inc. Member: NYSE, NASD, SIPC.

A member of The MONY Group.





Yew Dell Gardens is a partnership project of the Garden Conservancy, a national, non-profit organization founded to help preserve America's exceptional gardens.

2005 UPCOMING TOURS & EVENTS

The calendar at Yew Dell Gardens is bursting with activity as we prepare for an exciting new year. Upcoming tours and events are as follows:

Tours of the Garden

The second Saturday of every month, from 10:00 am to 12:00 p.m., Yew Dell will host tours of the gardens, plants, and buildings. Suggested donation, \$5.00 per person, free to members.

In addition to these open days, Yew Dell has recently expanded open hours during the week. Now every Tuesday & Thursday, guides will be available to offer tours from noon to 2:00 p.m. Please call ahead to help us schedule sufficient tour guides.

Events

- MAY 14-15** Bonsai Show & Demonstrations by the Greater Louisville Bonsai Society
- JUNE 4** Hosta Show, Hosted by Hosta of Kentuckiana
- JUNE 10** "Twilight in the Garden" Gala Celebration - Join Co-Chairs Rosemary Kirkwood and Jamie Swyers for this second annual gala evening, which will feature sumptuous samplings by The Silver Spoon in stations throughout the gardens, romantic twilight tours, and a live and silent auction.
- JUNE 12** Open House & Plant Sale - Join Chair Mary Anne Thornton and spend a day in the garden at Yew Dell for guided tours, sale of rare and unusual plants, lectures and much more.
- JULY 14** 100th Anniversary of the late Theodore Klein's Birth - Join Chair June Ezman for this member-only event featuring a picnic celebration in the newly renovated Red Tobacco Barn complete with barbecue and hayrides. Join us for an afternoon of fun-filled country fare. Look for your invitation and more details in the near future. If you are not a member, consider joining today so that you don't miss out on this memorable member-only celebration.



The Castle CHRONICLES

YEW DELL, INC.
P.O. Box 1334
Crestwood, KY 40014

OFFICE HOURS
Mon - Fri 9:00 am to 4:30 pm

(502) 241-4788

Special thanks to these underwriters:

Publisher's Printing Company, printing
United Mail, Inc. distribution

NON PROFIT ORG
U.S. POSTAGE
PAID
Louisville, Ky.
PERMIT #879