

# WINTER 2022

*20 Year Anniversary*



YEW  
DELL  
BOTANICAL  
GARDENS™



**“WE SHOULD ATTEMPT TO BRING  
NATURE, HOUSES, AND HUMAN BEINGS  
TOGETHER IN A HIGHER UNITY.”**

**- Ludwig Mies van der Rohe**





# EXECUTIVE DIRECTOR'S LETTER

Happy Birthday, Yew Dell! Twenty years . . . woo hoo!

My first day on the job as Yew Dell's first executive director was a little different than my days now 20 years later. Back in 2002, we had one half-time office worker and no paid staff working on the grounds. All the outdoor work was done by a horde of **passionate** volunteers on Second Saturday work days. We had a tiny but **passionate** (and supremely talented!) board. And we immediately started to attract a core of community members who were (and are!) equally **passionate** about saving this priceless piece of Kentucky history and turning it into a world class botanical garden.

**Passion.** That word keeps popping up, and for good reason. Yew Dell's first 20 years has been fueled, more than anything else, by passion . . . a passion for plants, for gardens, for teaching and learning, for history, for creating something truly special. In fact, that word has been so central to our development, direction, and success, that it was inserted front and center at the start of our newly minted mission statement:

*Sparking a passion for plants and gardening through accessible science and inspiring beauty.*

For our 20th year of sparking that passion, we decided that we'll need a whole year of celebration to do it justice. So each quarter of this year, we'll focus on a different aspect of Yew Dell; starting with this newsletter's focus on the architecture that is so central to Yew Dell's sense

of place. And by the end of our 20th year, we'll have covered the four central pieces of the Yew Dell puzzle; architecture, plants and gardens, history, and natural areas. And we'll throw in a major surprise or two along the way as well . . .

To those who have been here from the very beginning, the board members, volunteers, staff, and community members, thank you from the bottom of my heart for your support, your faith, your confidence and of course, your passion. And to those who are new to Yew Dell, welcome. You've joined an amazing and passionate community.

Here's to the next 20 years!

*Paul Cappiello*





### THE EVOLUTION OF PLANTS - IN-PERSON

WEDNESDAY, JANUARY 26

6:00 PM - 7:30 PM • \$20/\$30 - MEMBER/NON-MEMBER

Why do some trees make cones and others flowers? Join horticulture apprentice Silas Zoeller as he charts a course through the evolutionary timeline of plants. Discover what it took to get the variety of living plants today while making stops in time to discuss various stages of plant development.

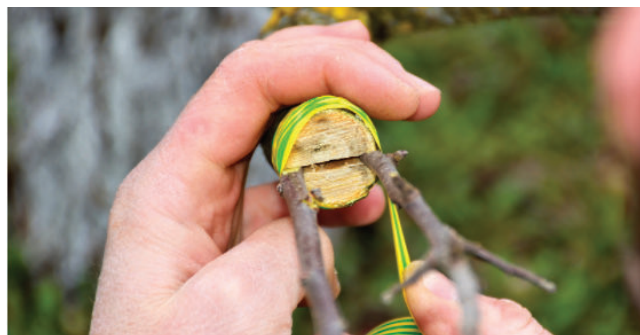


### COMPOSTING FOR HEALTHIER SOIL - IN-PERSON

WEDNESDAY, FEBRUARY 2

6:00 PM - 7:30 PM • \$20/\$30 - MEMBER/NON-MEMBER

Save those weeds, food scraps, and paper products! Our horticulture apprentice Allison Morgan will take a dive into all things compost-related and show you how to turn waste into the soil nutrients your plants are craving.



### HANDS-ON GRAFTING WORKSHOP - IN-PERSON

SATURDAY, FEBRUARY 12

1:00 PM - 3:30 PM • \$50/\$60 - MEMBER/NON-MEMBER

Part art, part science, grafting is one of the more mysterious plant production techniques. This is your chance to learn it! Chris and Michael Summers will talk about the process, the plants, and the tools of grafting. Then they'll guide you through an afternoon of hands-on grafting for some very cool and unusual evergreens. And once you've done the grafting, you'll take a few of your newly grafted evergreens home to grow in your own garden.

### HOUNDS ON THE GOUNDS

EVERY SUNDAY DURING OUR OPEN SEASON

12:00 PM - 4:00 PM

Starting March 27 to December 11, we allow leashed, well-behaved dogs on most Sundays for Hounds on the Grounds.

**Blackout dates for 2022 are July 10 and 17, and October 30 for our Boo Dell event.**



### PLANT WALK SERIES: THE OTHER EVERGREENS - VIRTUAL

FRIDAY, FEBRUARY 11

9:00 AM - 10:00 AM • \$15/\$25 - MEMBER/NON-MEMBER

Join our horticulture apprentices Allison Morgan and Silas Zoeller on a virtual tour through the gardens as they highlight the overlooked and underrated members of the evergreen community. Enjoy our impressive hellebore and epimedium collections as well as the wild gingers, laurels, and spurges that keep Yew Dell green all year long. Don't miss this opportunity to learn more about the true stars of the winter garden.

### PLANNING YOUR CUT FLOWER GARDEN - VIRTUAL

SATURDAY, MARCH 12

12:00 PM - 1:30 PM • \$15/\$25 - MEMBER/NON-MEMBER

In observance of #NationalPlantAFlowerDay, Terri Harrison, owner of Petal Power in Crestwood, shares her experiences in opening her cut flower business. She'll provide details on what NOT to do when planning your cut flower garden, share the lessons learned in her first year of operations, and guide you in planning a successful cut flower garden for this season.

### 80 YEARS OF ARCHITECTURE AT YEW DELL - IN-PERSON

TUESDAY, MARCH 15

6:00 PM - 8:00 PM • \$50/\$60 - MEMBER/NON-MEMBER

Join us for this celebration of Yew Dell's 20-year anniversary with an expert-led evening all about architecture. Yew Dell's primary architecture partners for the last 20 years, Ross Primmer and Roberto de Leon of de Leon & Primmer Architecture Workshop, will present a lecture and walk covering Theodore Klein's whimsical castle, Cotswold-styled home and outbuildings, and how they provided the inspiration for de Leon & Primmer's award-winning new architecture seen on the grounds today. Enjoy an evening of cocktails, hors d'oeuvres, an architecture lecture and walk, and take home a whole new appreciation of the magic of Yew Dell.







To register and for more information, go to [www.yewdellgardens.org/classes-events](http://www.yewdellgardens.org/classes-events)

# CLASSES AND EVENTS

## SERIES: DESIGNING YOUR HOME LANDSCAPE

We have a new series this season that is designed to help you get a handle on your home landscape. Whether you're a new homeowner or your existing home landscape needs a refresh, this is the series for you. Take one workshop or all three and you'll be ready to tackle your project this spring. No experience is needed. Those who complete all three sessions will go home with a free plant from our nursery to help get you started on your own garden!

### SESSION ONE: CREATING A LANDSCAPE PLAN - IN-PERSON

SATURDAY, FEBRUARY 19

11:00 AM - 12:30 PM • \$25/\$35 - MEMBER/NON-MEMBER

Paul Cappiello, Yew Dell's executive director, kicks off our Designing Your Home Landscape series with this class. From site inventory to program development and mapping out the process, we'll cover it all in an easy and straightforward presentation. Whether you have a new home with a blank slate or an existing yard that needs some attention, this course will get you going in the right direction.



### SESSION THREE: FROM PLAN TO PLANTED - IN-PERSON

SATURDAY, MARCH 5

11:00 AM - 12:30 PM • \$25/\$35 - MEMBER/NON-MEMBER

Sayde Heckman, Yew Dell's garden and arboretum manager, wraps up our Designing Your Home Landscape series with a workshop on planting techniques, soil amendments, mulches, and more. Even if you're a seasoned homeowner, this will be an excellent review of the essential practices to help ensure your plants hit the ground running.

### SESSION TWO: SELECTING PLANTS FOR THE HOME LANDSCAPE IN-PERSON

SATURDAY, FEBRUARY 26

11:00 AM - 12:30 PM • \$25/\$35 - MEMBER/NON-MEMBER

Jacob Stidham, Yew Dell's nursery and greenhouse manager, takes us from the paper plan to purchased plants in the second session of our Designing Your Home Landscape series. Using examples from Yew Dell and his own home garden, Jacob will provide tips and tricks for taking the mystery out of the process of selecting the best plants for your new landscape.

## OPENING DAY

IN PERSON

SATURDAY, MARCH 26

10:00 AM - 4:00 PM

ADVANCED TICKETS REQUIRED

FREE/REGULAR ADMISSION - MEMBER/NON-MEMBER

Opening Day 2022 has the special distinction of kicking off our 20th Anniversary! This year, we have three timeslots to spread out the crowd- so reserve your tickets now! In addition to the traditional plant sale with hellebores and other spring ephemerals, we'll have a family activity as well as drop-in garden tours throughout the day with our Horticulture Team.

GARDEN GIFT SHOP OPENS FOR THE SEASON!





# NOTES FROM THE NURSERY

One of the most rewarding parts of Yew Dell's first 20 years has been the meteoric growth of our plant nursery. From our very first (and somewhat comically frenetic since we didn't even have a parking lot!) in-person plant sale, providing the gardening public the very best plants has always been at the top of our long range plan. But that's not the whole story. . .



With the addition of nursery and greenhouse manager Jacob Stidham in January of 2018 and nursery assistant Cosmo Bosela in 2020, not only did plant production and sales go off the charts, so did the gardens. No longer restricted to using plants available at commercial nurseries (because Jacob and Cosmo can grow anything!) gardens and arboretum manager Sayde Heckman now has access to just about anything. When she sits down with her staff to design the next year's tropical and annual displays, the sky is truly the limit. If Sayde wants it, chances are pretty good that Jacob can find it and grow it. What a luxury as a garden manager to have access to literally the world's flora!

**As we look forward  
to the coming year of both  
anniversary celebrations  
and plant sales, we thought we'd  
give you the rundown  
for what to expect for 2022  
– our 20th year!**

## Online Sales

Monthly Releases – as we did for 2021, we'll start out of the blocks with a January release of shade perennials, then February sun perennials, and in March we'll upload trees, shrubs and whatever else we find kicking around the nursery. We'll add periodic releases through the rest of the growing season so make sure you're signed up for our e-newsletter and pay attention to social media posts. Scheduled pick up just like 2021.



**Scan Here To Subscribe  
To Our Monthly Garden eNews!**



# In-Person Sales Every day and Events Sales



## Garden Gift Shop

Starting on opening day (March 26) we'll have plants available for sale near the shop as we have had for the last few years. There will be plants for sale there through most of the growing season.



## Plant Market

Our newest addition in 2021 is located behind the glass greenhouse. This market operates much like the Garden Gift Shop plant sales area but gives us more space for more plant varieties.



## Spring Plant Sale

This is the Big Kahuna . . . our 20th anniversary edition! Scheduled for Saturday April 30. And while you will have lots of chances to buy online before then, there will be plenty of outstanding plants available only at the in-person plant sale.



## Fall Plant Sale

Rapidly becoming the horticultural social event of the year, this is the best time to buy new plants for fall planting. Plus, we'll have our second annual plant food fight – an open forum discussion of some of the best and worst performers of the year!



## Opening Day Plant Sales

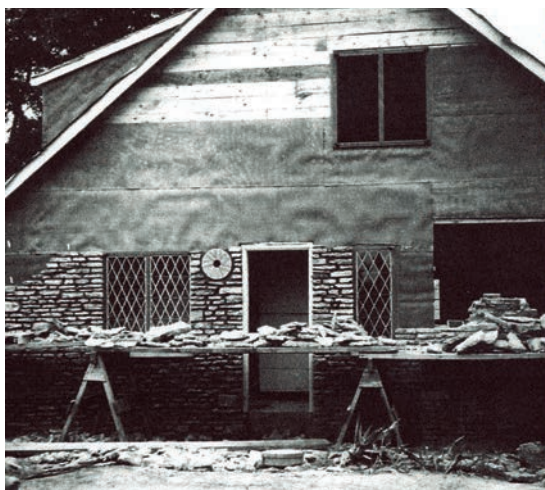
Hellebores and other early blooming spring plants will be for sale in special, Opening Day Only, areas. March 26 only. Tickets must be reserved in advance.



# 80 Years of Architecture at Yew Dell



When we set out to discuss how to kick off the year-long celebration of Yew Dell's 20th anniversary, it didn't take long for us to all agree on architecture as our first quarter focus. After all, while the plants and gardens often get top billing (we are a botanical garden!) it is indisputably Theodore Klein's unique and whimsical architecture that sets the tone across the property.



The distinctive Cotswold style that is so prominent in the house, castle, rock house and fieldstone walls around the property, had its heyday in England during the 16th and 17th centuries and enjoyed a bit of a revival in the US in the 1920s and 30s, just prior to the time the Kleins started to develop their Crestwood farm. Typified by fieldstone construction, prominent chimneys and steep roof lines, Theodore Klein's love of history and building craft are evident throughout his work.

In the house, some of the supporting lumber for the first floor was salvaged from the Confederate Soldier's Home in Pewee Valley – a structure that was closed in the 1930s. There's wormy chestnut paneling that Klein and a friend milled out of an old American chestnut log dragged back to the farm from a nearby cemetery. Inlaid hardwood flooring (different patterns in every room) and secret cupboards for an early hi-fi stereo speaker system and an 1800s Regina music box, add to the home's charm and whimsy.





And Yew Dell's iconic castle certainly doesn't play second fiddle to the house when it comes to craftsmanship and details. From the intentionally wavy roof line (to make the castle look old) to the hand carved sundial over the front entrance and carved stone family crest that he designed with his daughter Marian, the castle is a treasure trove of detailed artistry.

In an entirely different style, the elegantly utilitarian Gheens Barn was built from a kit and supported the family's livestock operation. Built into the hillside so both the upper and lower levels were accessible from ground level, the barn is a model of design simplicity and efficiency.

But the Klein-era architecture is only half the story at Yew Dell.

Starting in 2002, we were fortunate to develop what would turn into a 20-year relationship with the brilliant minds of Ross Primmer and Roberto de Leon of the de Leon & Primmer Architecture Workshop. Starting quite modestly (with a lighting plan for the newly hired executive director's office!) from our very first discussions it was clear that the DPAW approach was to honor the artistry and history in Klein's early work and translate it to contemporary architectural expressions for the growing botanical garden.



The result of the last 20 years of collaboration has been two-fold. First, the DPAW team helped the Yew Dell board and staff develop a comprehensive design vocabulary for the property to ensure the property would feel unified and consistent throughout. Secondly, they created designs that have added award winning, contemporary architecture to Yew Dell's core set of offerings. In fact their designs were so compelling and so effective at working with the historic fabric of the National Register of Historic Places property, that each of the 4 major works was honored with the highest design award by the Kentucky chapter of the American Institute of Architects.

Architecture at Yew Dell is not simply a history lesson or a snapshot in time. It is a forward looking integration of the old and the new and a dedication to creatively melding outstanding architecture and horticulture into a sum that is so much greater than the parts.

**Honoring the past and letting it inspire the future . . .  
it's what Theodore did . . .  
it's what we have done for 20 years . . .  
and it's what we'll continue to do into the future.**

*20 Year Anniversary*



# Plant Architecture

NOTES FROM THE GARDEN AND ARBORETUM  
MANAGER, SAYDE HECKMAN



The combination of smooth gray bark and twisted branch architecture make the contorted European beech (*Fagus sylvatica* 'Contorta') a knockout specimen in the arboretum.

Yew Dell is known for its unique and timeless building architecture – and for good reason. But the plant collections spread across the grounds offer their own architectural impact as well. And as prominent as that plant architecture can be, it's surprising how often it is overlooked when selecting plants for a garden or landscape. We long for the first Magnolia bloom of the season or the fresh spring foliage on our Japanese maples. But we often overlook the beauty beneath the foliage and beyond the flowers.

As you walk the gardens at Yew Dell you'll see display signage on the plants with Latin (Latinized!) words like *pendula*, *contorta*, and *fatigiata* in the plant botanical names. And many of these nomenclatural terms describe the plant's architecture or other features that can be put to use to enhance your garden. *Pinus strobus* 'Pendula' is the pendulous or weeping white pine. *Fagus sylvatica* 'Contorta' is the name of the contorted European beech. Those are pretty straightforward.



The weeping (or pendulous) white pine (*Pinus strobus* 'Pendula') offers gracefully pendulous branches on this visitor favorite evergreen located in the Secret Garden.



Paperbark maple (*Acer griseum*)



Lacebark elm (*Ulmus parvifolia*)

Other plant names can provide less obvious clues into plant features. While the name *Acer griseum* may not mean much on first reading, the common name – paperbark maple – is spot on. Same with the finely flaking bark of *Ulmus parvifolia*, the lacebark elm. Bark can contribute to a plant's architectural impact almost as much as branching.



*Ginkgo biloba*



'Ryusen' Japanese maple (*Acer palmatum*)



'Slender Silhouette' sweetgum (*Liquidambar styraciflua*)



If you look even closer you can find intriguing architectural features in buds, fruiting structures, cones, branches, and more. One of my all-time favorite little architectural details is the spur growth on the Maidenhair Tree (*Ginkgo biloba*). These stubby little branch bits are nothing more than tightly stacked bud scars built up over the plant's life. You can see the same structure on many fruit trees.

And then there's simply putting all this architecture to best use in the garden. Whether it's the spire-like 'Slender Silhouette' sweetgum (*Liquidambar styraciflua*) as an exclamation point in the garden or drifting the graceful branches of a weeping Japanese maple (*Acer palmatum* 'Ryusen') over a retaining wall, plant architecture adds much to the garden year round.

## WINTER HOURS

DECEMBER 14 - MARCH 25

TUESDAY - FRIDAY

10:00 AM - 4:00 PM • FREE ADMISSION/DONATIONS WELCOMED

With Yuletide over, we have adjusted our hours for the winter season. Visitors are welcome to come out and enjoy Yew Dell Botanical Gardens but there will be limited access to parts of the grounds and buildings. Before you visit, please check our website for holiday and weather-related closures.



**Paul Clinton**  
Arborist/Forester



Practicing the art and science of arboriculture since 1988

Office 241-0471 • Cell 296-3825



## Natural Products

MULCH • COMPOST • TOPSOIL • PLANTING MIX  
GRAVEL • SAND • GREEN WASTE RECYCLING

2800 INTERIOR WAY

LA GRANGE, KY

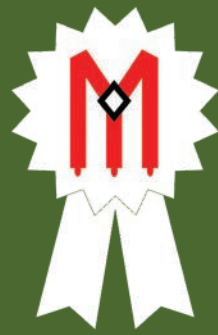
NATURALPRODUCT@BELLSOUTH.NET

WWW.NATURALMULCHLAGRANGEKY.COM

502-222-4545



# '22 THEODORE KLEIN AWARDS



It's time for the Theodore Klein Awards! Every year, a panel of Kentucky green industry professionals hunkers down and debates over which plant nominees earn such a high distinction. The awards started back in 1999 and now make up the go-to collection of woody and herbaceous garden plants for the region.

For a link to past winners, see [www.yewdellgardens.org/theodore-klein-plant-awards](http://www.yewdellgardens.org/theodore-klein-plant-awards)



**Chinese Dogwood** (*Cornus kousa* 'Greensleaves') – One of the best cultivars on the market today, this 20' x 20' tree develops deep, glossy green leaves, brilliant white late spring floral displays, and excellent fall color of red, orange, and burgundy. It is highly disease resistant and adaptable to a wide range of soils. Best for full sun but happy in part shade as well.



**Japanese Beauty Berry** (*Callicarpa dichotoma*) – This 3' x 3' shrub is best known for its brilliant, amethyst-colored fruit that color up in late summer and last through the fall. Bright green foliage sets off delicate pink/white flowers on branch tips in mid-summer. Best in full sun to light shade. Deer resistant.



**Kodiak® Series Diervilla** (*Diervilla Kodiak®* Series) – North American native shrubs to 3-4' tall and wide that are best known for their spring and fall foliage colors. The Kodiak® Red, Orange, and Black selections all offer disease (and deer) resistant foliage and delicate yellow summer blooms. Plants are tolerant of full sun or light shade and perform well on any reasonable soil.



**Short-Toothed Mountain Mint** (*Pycnanthemum muticum*) – Stunning 2'-tall perennial with silver/grey leaves and pale pink flowers that is an absolute pollinator magnet. Best in sun to light shade. Excellent for rain gardens, mixed borders or naturalizing at the woods edge.



**Swamp Sunflower** (*Helianthus angustifolius* 'First Light') – This fabulous, compact selection of an already excellent North American herbaceous perennial will top out at about 4' tall. In September and October it is smothered in 2-inch diameter, screaming yellow daisy flowers. Loves full sun and can handle damp soils but will adapt to any reasonable garden soil. Deer resistant.



**Foam Flower** (*Tiarella cordifolia* 'Running Tapestry') – This fabulous North American native herbaceous groundcover is perfect for the shade garden. Growing to about 10" tall, its bright green leaves are flecked with deep red through the summer and the color intensifies after fall frost. Spikes of clear white flowers cover plants in spring. Avoid very dry soils.





# LIMBWALKER

Louisville's Urban Forest Experts

ORGANIC LAWNS

PLANT HEALTH CARE

MOSQUITO CONTROL

TREE CARE



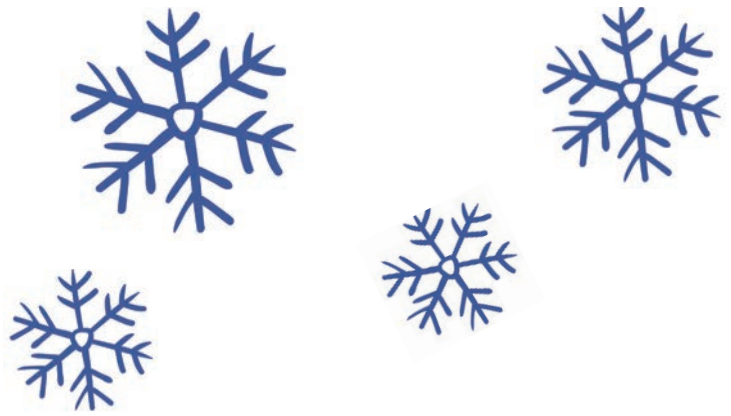
We're proud to be here for all your tree care and plant health care needs.

Visit our website [bobrayco.com](http://bobrayco.com) or call us at 502-425-7654.



# THE BUDDING GARDENER

A GUIDE FOR GARDENERS OF ALL AGES



## Observe Winter

In our part of Crestwood, “winter” can range from warm temperatures to bitter cold, with dry days and both rain and snow. We watch our gardens year-round, and we are always amazed at what is happening. Here are some suggestions to keep you connected to your garden through the lens of snow.

### Before The Snow

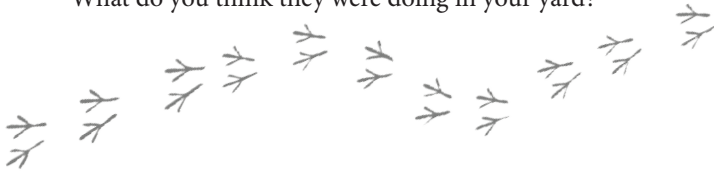
Gather dried leaves, acorns, seedpods, sticks, and other natural plant products when it is dry outside. Keep them in a glass jar and sketch how different each looks in the spring and summer.



And what outdoor scents do you notice in winter that you may not smell in other seasons?

### During The Snow

Look at the tracks in the snow. What made those footprints? What do you think they were doing in your yard?



It is estimated that 13 inches of snow equals 1 inch of rain. Keep a record of how much snow and rain falls in a season.

### After The Snow

Study where the snow melts the fastest in your yard. That’s likely where you could place your sun-loving plants. The spots that take longer to thaw may prefer shade plants.

Is anything green popping up yet through the snow? Keep your eyes open for snowdrops and daffodils that bloom in the winter.



## VOLUNTEER HIGHLIGHTS

### THANK YOU, UPS!

October was Global Volunteer Month at UPS and we were honored to have two huge groups out to give back to the community by improving our gardens. More than 60 UPS employees came out to volunteer and they made an enormous impact on Yew Dell’s grounds. From our arboretum to our gardens to our apprentice house to our woodland trail and even our skies- they literally touched all four corners of our 60 acres! We are blown away by the support we get from our community.





# COMMUNITY HIGHLIGHTS

THANK YOU, COMMONWEALTH BANK & TRUST AND LIMBWALKER TREE SERVICES!

Yuletide at Yew Dell proved to be merry and bright! We were delighted to have so many visitors come out and make Yew Dell part of their holiday tradition. It would not have happened without the support of our presenting sponsor, Commonwealth Bank & Trust Co. along with the help of Limbwalker Tree Service. Thank you!



## MEET OUR NEW STAFF!



**ALLISON MORGAN**  
HORTICULTURE APPRENTICE



**TONY ASCHEMAN**  
BUILDINGS & GROUNDS ASSISTANT



**AMANDA BARNETT**  
VOLUNTEER & WEBSITE COORDINATOR

Over the year, we will introduce you to the newest additions to the Yew Dell family.

## Did YEW Hear?!

We have a new website!

Check out our new look at [www.yewdellgardens.org](http://www.yewdellgardens.org)

# THANKS TO OUR 2021 CORPORATE SPONSORS

All of us at Yew Dell Botanical Gardens would like to thank our community and corporate partners who generously sponsor and provide in-kind support to our gardens and events.  
We could not grow without your help.

- Bluegrass Motorsport
- Bob Ray Company
- Brown-Forman
- Commonwealth Bank and Trust
- Corvus Capital
- Digs Home and Garden
- Dinsmore & Shohl
- Dwyer Designscapes
- Gettelfinger Family Foundation
- Kentucky Artisan Distillery
- Kentucky Select Properties
- Kiel Thomson Company
- LG&E/KU
- Limbwalker Tree Service
- Moose Capital
- Outdoor Lighting Perspectives
- Oxford Garden
- Parthenon
- Petal Power Flowers
- PNC Wealth Management
- Project Guild of LaGrange
- RoundHouse
- Shiraz Mediterranean Grill
- Stites & Harbison
- Stock Yards Bank & Trust
- United Mail





6220 Old Lagrange Road  
Crestwood, Kentucky 40014  
[yewdellgardens.org](http://yewdellgardens.org)

NON PROFIT ORG  
U.S. POSTAGE  
PAID  
Louisville, KY  
PERMIT #879



Yew Dell Botanical Gardens is a partnership project of the Garden Conservancy, a national, non-profit organization founded to help preserve America's exceptional gardens.  
Copyright 2021



# MEMBERSHIP

*BE A PART OF THE CELEBRATION!*

As we celebrate our 20 year anniversary, now is the time to become a Yew Dell member! There is something for everyone in a membership, from free admission throughout the year to first dibs on our summer concerts to discounts on our classes and in our garden gift shop.

SCAN TO  
BECOME A  
MEMBER  
TODAY!



Follow Us On Social Media  
[@yewdellgardens](https://www.instagram.com/yewdellgardens)



SPECIAL THANKS TO: UNITED MAIL, INC.