

YEW DELL BOTANICAL GARDENS

January • February • March 2020



Helleborus
'Confetti Cake'

Opening Day 2020 **3**

The Conifer Conundrum **7**

Planned Giving and Yew **11**

LETTER FROM THE DIRECTOR

WINTER IS UPON US...

Winter... It's the best of times and the worst of times, the age of wisdom and the age of foolishness, and the epoch of belief and the epoch of incredulity. I'm sorry but Mr. Dickens had to be a gardener.

Winter is the best of times if you like to peruse catalogs, review the successes and challenges of the past season and plan for the coming garden year. It's the worst of times if it's January and you're already overwhelmed with cabin fever. The double edged sword of wisdom and foolishness is as obvious to the gardener as to the golfer. And when it comes to belief and incredulity, where else but the garden can you be so struck with both.

The new year offers us a chance to learn from the worst and build on the best; to pack away the lingering grumpiness of the past year's deluge, drought, borers and beasts. After all, gardeners are eternal optimists. And at Yew Dell Botanical Gardens, the best is always on the horizon.

In this new issue for 2020 you'll find a whole lot of new going on – gardening advice for new homeowners and those looking to take their gardens in a new direction. We've expanded our class listing, event programming and offerings on the grounds. We're building new evaluation gardens to help us figure out which new plants actually make the grade. We're planning new experiences and surprises throughout the year.

I hope you'll join us for what is sure to be a heck of a ride for the coming season.

Happy Gardening,

Paul Cappiello
Executive Director

**WE FIND SOLUTIONS
WHEN OTHER COMPANIES CANNOT**

**FULL SERVICE ELECTRICAL COMPANY
COMMERCIAL AND RESIDENTIAL**

**Design • Repair • Installation • Consultation
Landscape Lighting • Ponds-Pumps**

Call or Text 502-810-4682

www.churchmanelectric.com

Churchman
Electric and Technologies

ON THE COVER: HELLEBORUS 'CONFETTI CAKE'

Hellebores are the queens of the winter garden. Evergreen, shade tolerant and deer proof, their February - April blooms add a touch of class all winter long. 'Confetti Cake' is the product of famed breeder Hans Hansen who selects for large blooms, vivid colors and vigorous growth.



SAYING GOOD-BYE TO A LONG TIME BOARD MEMBER AND DEAR GARDEN FRIEND

November brought the sad news that we had lost a gem from our Yew Dell family. Weezie Hickox was one of Yew Dell's original board members - one of those people who stepped up early and often, even when few others could see the potential of the place. With her quiet generosity, quick wit and penchant for delightful garden luncheons, Weezie helped to literally save this place from being demolished. She was a faithful board member who brought out friends, arranged flowers for fundraisers, supported auctions, dinners, and plant sales. For many years Weezie dug winter aconites from her own garden and forced them into bloom on her windowsills to give to volunteers at Yew Dell's annual volunteer appreciation event.

Weezie was a passionate gardener with both broad and deep knowledge of the craft. And she delighted in helping to make Yew Dell a place that would share her passion with all. We will miss her dearly and will work hard to insure that Yew Dell will always be a place that would make her proud.

YEWDELLGARDENS.ORG

OPENING DAY 2020

Saturday, March 28



Keeping with our developing tradition, Opening Day will feature sales of the irreplaceable **Hellebores** – those winter blooming, evergreen stunner, **deer proof gems of the garden**. You'll find brand new varieties, Yew Dell's ever present expert advice and a rejuvenating spring garden atmosphere. We'll have a few **other early blooming specialties** to whet your plant appetite as well.

Along with the plant sale, there are so many new projects at Yew Dell we will be celebrating! Our horticulture staff has a line up of several workshops, talks and experiences to highlight all that is new and improved. See page 5 for more details. Here's a sneak peak of what we're excited about: the pollinator meadow should no longer be the "dead-ow", we will break ground for our highly anticipated plant trial and evaluation area, we've expanded the nursery area, the arboretum is more interactive than ever with the addition of a sound garden and a self guided tour of the trees. And the cherry on top is a new snack shop at Yew Dell! Name is TBD, but if we decide to sell sandwiches, "Yew Deli" is a top contender.

And while you're here, be sure to check out the **Garden Gift shop for new arrivals**. Shop manager, Madge Huecker, spent the long, dark days of winter perusing catalogs, hitting the show floors and searching for just the right tools, books, and gifts for everyone from kids to grandparents, to gardeners and lovers of beautiful things!

CHANGE OF STAFF

After eight years as the Marketing and Events Director, Jackie Gulbe retired at the end of October 2019. We are sad to see her go, but pleased to announce that Lindsay Duncan is moving into a new role as Marketing and Public Relations Manager. Lindsay has overseen Yew Dell's Volunteer Program and social media for the past three years. Her unique and engaging content has increased the number of our social media followers by the thousands. This is the end of an era, but marks an exciting new chapter for Yew Dell!



2020 Winter - Early Spring Events and Classes

Watch for emails and check our website for complete descriptions, program updates and additions.



Botany of Bourbon Cocktail Hour

Thursday, February 20; 6-7:30 pm

At Kentucky Artisan Distillery

\$35/\$45 - Member/Non-member

Join Yew Dell's Executive Director, Paul Cappiello and Kentucky Artisan Distillery's Master Distiller, Jade Peterson for a fun and informative distillery tour that will combine the grains and the brains of the distilling process. Cocktails and appetizers will of course be part of the experience.



Garden Designing for the Impulse Buyer

Wednesday, February 26th; 6-7:30 pm

At Logan Street Market

\$20/\$30 - Member/Non-Member

We can design and plan all we want when it comes to our garden, but in reality are we going to stick to it? I'm sure, like us, many of you buy a plant on impulse and purely because you "HAVE to have it!" So, if you are guilty of having a midsummer plant nursery on your driveway from plants you found on sale or at a plant geek conference then this is the class for you! We will discuss the basics of garden design and planning in order to make those random plant purchases easier to place in your own garden!

Travelogue Dinner - Japan Edition

Wednesday, March 18; 6:30- 8:30 pm

\$80/\$90- Member/Non-member

Welcome to plant and garden paradise! Join us for our annual winter dinner that this year will take us to the gardening Eden of Japan. Over a themed dinner, Yew Dell executive director Dr. Paul Cappiello will entertain us with images and stories of the plants and the people behind the business that makes Japan a gardener's paradise. From the rarest of the rare to the most ancient of garden practices, this presentation will make you want to pack your bags and hop on a plane. Sign up quickly as these dinners sell out fast.

Volunteer Celebration

Saturday, March 21; 10- 11:30 am

Whether you are a seasoned volunteer or just curious about our Volunteer Program you won't want to miss it! For more information, see page 8.



The Dirt on Potting Mixes

Saturday, March 21; 1- 2:30 pm

\$20/\$30 - Member/Non-member

Join Yew Dell nursery and greenhouse manager, Jacob Stidham, for a hands on class on creating the perfect potting mix. From succulents to orchids, tropical house plants and patio veggies, Jacob will take you through the tricks of the trade. He'll cover drainage, nutrition, aeration and more. Each participant will mix up and take home one bag of potting mix to use in their own pots at home.



Opening Day & Hellebore Sale Event

Saturday, March 28; 10 am-4 pm

(see workshops below for specific times and locations)

Free for members or included with regular admission

See page 3 for more details.

Opening Day Workshops, Tours and Experiences

11:00 am Attracting Wildlife to the Home Garden, Lori Carlos- Learn how to build a solitary bee habitat for your own garden!

11:30 am Making Music in the Garden, Jeffrey Fox- Take a walk on the sonic side! Enjoy a musical demonstration in the arboretum featuring the sound garden instruments. Fun for the whole family!

12:00 pm What's in Bloom walk, Sayde Heckman

1:00 pm Noble Tree walk, Jacob Stidham



Secret Garden Party - Derby Edition

Wednesday, April 8; 6-8 pm

\$35/\$45 Member/Non-member

Location: It's a secret!

Join Yew Dell staff at a secret location for a new and fun take on the garden party. We'll email you a couple of days before the event with the address of this Louisville location. You'll join us for a cash bar and light snacks at a location few people ever see. There'll be time to enjoy interesting plants, take in a little history and kick off the Derby season. Limited to 40 so sign up soon!



Spring Bulb Walk and Master Class

Thursday, April 9th; 5-6:30 pm
\$20/\$30 - Member/Non-member

Enjoy a chance to learn from our resident bulb guru, garden manager, Sayde Heckman, who's responsible for the massive Big Bloom display. Walk the Big Bloom beds consisting of over 14,000 bulbs from early snow drops to crocus, hyacinths, tulips and some unusual offerings as well. Sayde will talk about how she makes selections, crafts fabulous combinations and pulls it all together for a stunning show - and she'll offer tips on how you can create your own Big Bloom at home.

Hypertufa Workshop

Saturday, April 18; 10- 11:30 am
\$35/\$45 - Members/Non-member

Create the perfect horticultural masterpiece for your garden or patio. Yew Dell's former director of marketing & events turned volunteer Jackie Gulbe will guide you through the process of creating your own hypertufa planter. Hypertufa containers are the perfect home for low maintenance plants like succulents and cacti. Making this creation before the Plant Sale gives you the perfect opportunity to come back and shop for plants to fill your new hypertufa creation.



The Big Bloom

If last year's 14,000 spring bulbs just didn't do the trick for you, maybe we'll get your attention this year. For 2020 we have even more bulbs, wilder combinations and some unusual offerings to help jump start your spring garden engine. From crocus to tulips, hyacinths and snow drops, this year's offering will have something for everyone.

Whether you come for a casual stroll through the bulbs or join us for a guided bulb walk and workshop, don't miss this year's Big Bloom. Garden manager Sayde Heckman and her band of interns and volunteers have outdone themselves this time!

Members Only Plant Sale

Friday, April 24; 5- 8 pm

Memberships available at the door!

By all means, make sure your membership is up to date. This is THE plant sale event of the season and members get first crack at the best of the best plants. Nursery manager, Jacob Stidham has put together an amazing list of perennials, shrubs, trees, tropicals and more – and they're all plants we've tested and done our best to kill right here at Yew Dell, so you won't have to. Members can enjoy a beer or glass of wine and light snacks while they fill their carts, wagons, trucks and vans with the newest, the coolest and the never-seen-it-before!

Plant Sale

Saturday, April 25; 10 am- 2 pm

Free for members or included with regular admission

If you can't make the members' only Party and Plant Sale on Friday evening, be sure to join us on Saturday, April 26th when we fling open the doors to all for our annual plant sale event. We'll have a killer selection of plants along with our expert staff and volunteers to help you find just the right plants for your own garden project. Whether you're looking for a single tree for the front yard or you're in the market to build an entire pollinator garden, we're here to help.



EXPERIENCED ♡ COMMITTED ♡ ARBORISTS

WWW.GREENHAVENTREECARE.COM

YEWDELLGARDENS.ORG

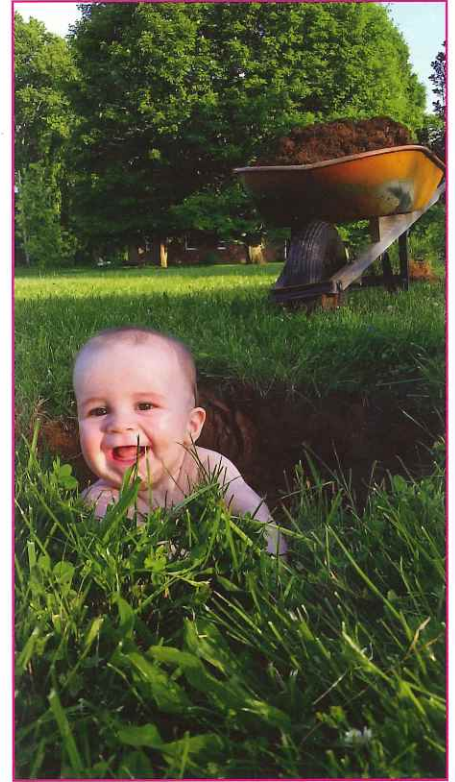
NOTES FROM THE NURSERY MANAGER

Jacob Stidham

How many trees have my wife Emma and I planted since we moved into our home in November of 2012? Sixty, give or take a few depending on your definition of tree vs. large evergreen shrub. Ninety, if you count the small *Thuja plicata* 'Green Giant' we recently planted as a hedge along one side of the property. We are the perfect couple to ask if you are wondering about there being enough room for another tree in your yard. Yes! Yes, there is.

True story - The first night we moved in, Emma was in the house unpacking dishes or something and I was outside cutting down bush honeysuckle by security light. Priorities, right? Since that first day the "yard" has been in a constant transformation into an arboretum/garden. Of course, like responsible plant geeks, Emma and I sat down and drew out a landscape design with tiny circles that represented a list of plants that we were going to plant. Wrong! We didn't have any kind of plan. We both worked at retail garden centers at the time and bought plants without the other's permission, weekly, and like a kid with a credit card at Toys R' Us in the 1990's. We were out of control. We're still out of control, and we don't plan on changing. It is so bad that our Christmas tree each year is an unusual evergreen. We put presents under a *Cryptomeria japonica* 'Yoshino' this year. We can look out our front window and still see our last 6 Christmas trees!

The moral of this article is to get you excited about planting trees in your yard if you have one. No, space isn't an issue. Only have a 4' x 4' yard? Look at a *Liquidambar styraciflua* 'Slender Silhouette.' Power lines an issue? Try a *Maclura pomifera* 'White Shield.' Neighbors you don't like? There are some fantastic evergreens out there. Have an HOA that requires a tree be from a certain list they find acceptable? Move away from there, you don't need that negativity in your life!



NOTES FROM THE GARDEN MANAGER

Sayde Heckman

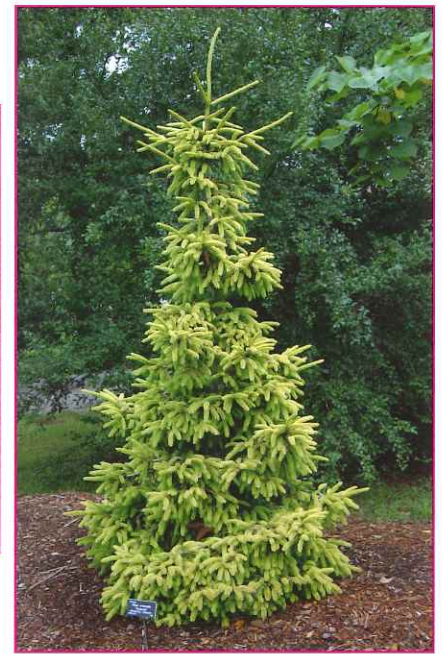


As a collector of plants of all sorts I am faced with the difficult task of determining what it is, exactly, that I am looking for in homeownership, aka garden ownership! Unlike a first homebuyer, non-plant enthusiast who typically is looking for 2 bedrooms, 2 baths, and a low maintenance landscape, we gardeners have some difficult questions to ask ourselves.

1. How much garden/acreage can I maintain? Depending on your household you may be the only plant addict, like me. Be honest with yourself about how many daylight (and headlamp illuminated) gardening hours you will actually commit to your garden.
2. What is the health of the existing landscape? If trees are in poor health they can cost thousands to be professionally removed. That means less money for new plants.
3. What does the soil look like? Bad soil can limit your plant selection and can make gardening a headache. Improving soil takes time. So we have to be those weirdos checking the soil, especially with newer constructions as most of the topsoil is removed and sold.

4. How much sunlight is available? Determine the positioning of the house and see what kind of sunlight you'll get in different areas. This is the time to see if the windows and the deck or patio are suitable for your houseplant collection.

No matter your reasons for becoming a homeowner it should be focused around what makes you happy, and for me that's having my own garden. Although it takes extra effort to find the perfect home and garden I hope this gets you thinking about what you really want in homeownership, aka garden ownership. Happy searching!



THE CONIFER CONUNDRUM

Paul Cappiello

Offering gardening advice can be a bit like being an NFL punter – often initiating activity but sometimes conspicuously absent at the point of impact. That means those recommendations can sometimes come up a little long on passion and a little short on detail. And recommendations for the winter garden can serve as a good example.

“Plant evergreen conifers.” That’s an easy and oft spouted recommendation for sprucing up (sorry!) the winter landscape. Evergreens offer nice foliage color through the colder season and provide a visual relief from the grays, browns and other somber tones of winter. The problem is, coming up with the perfect selection can be tough.

Problem #1 – Conifers can get big... really big. Your standard Norway spruce (*Picea abies*) can grow over 100’ tall and more than 80’ wide. That means they can cover almost a quarter of an acre! How many residential lots can handle a quarter acre tree? My Highlands lot is one tenth of an acre. Put one mature Norway spruce in the middle of my lot and I’d have to hollow out the trunk just to get out of the rain! Same goes for many other full sized conifers.

Problem #2 – Dwarf conifers grow slow... really slow. There are thousands of dwarf conifers on the market. Many make cute little muffins with blue, yellow and even variegated colors. Eventually some might even grow into something you’d mistake for a tree. But a tree that grows 2” a year isn’t going to make much of an impact for a long, long time. It can be a bit like putting a single gold fish in a 10,000 gallon tank. Sure it’ll grow... eventually...

There are some great medium sized conifers but they do take time to grow. Sure, you can go out and buy a 40’ tall Hinoki false cypress (*Chamaecyparis obtusa*), oriental spruce (*Picea orientalis*) or weeping white fir (*Abies alba* ‘Pendula’) – all great trees for the winter garden – but you’d have to plunk down a year’s salary for such an old and large specimen.

Of course the sensible alternative is to take the gardener’s approach and have some patience. We all know that planting small means planting smart. And there’s no denying that watching a plant grow over the years into what you envisioned . . . that just makes it all that much better.

So from my punter’s perch behind my desk, here’s my advice. Whether you’re starting a new garden or renovating, think about the winter color. Think about those fabulous conifers that add so much to the winter landscape. And think about giving it some time to grow.

Now please excuse me while I duck out of bounds before I get hurt!

VOLUNTEER HIGHLIGHTS

VOLUNTEER SPOTLIGHT

Fran Tiller



"It's hard to say what my favorite experience at Yew Dell has been after 14 years of fun and high jinks with my buddies in the volunteer crew. Most recently, with the building of the 3 new greenhouses, I have enjoyed learning from Jacob Stidham about the management of them and the preparations required for new plant stock."

VOLUNTEER CELEBRATION SATURDAY, MARCH 21; 10-11:30 AM

We invite you to attend Yew Dell's Annual Volunteer Celebration where we get together to recognize the wonderful contributions of our volunteers to our gardens. Anyone interested in joining our Volunteer Community is more than welcome to attend. Come enjoy a potluck provided by Yew Dell staff and the presentation of Yew Dell's Volunteer Awards in the beautiful Gheens Barn!

UPCOMING VOLUNTEER OPPORTUNITIES

Opening Day - March 28

Spring Plant Sale - Friday, April 24 and Saturday, April 25

Volunteer Orientation is held on the second Saturday of each month from 9-10 am, March-November.

E-mail grow@yewdellgardens.org or call (502) 241-4788 to sign up!

VOLUNTEER HIGHLIGHTS



Every year, we take volunteers on several private tours of gardens in the Louisville area. One trip was to Peggy Fowler's gorgeous garden and historic home in Henry County. Thank you, Peggy, for your amazing hospitality!



Nursery Volunteers have helped grow and maintain a remarkable number of plants. Our horticulture staff always provides volunteers with opportunities to learn! Photo taken by volunteer, John Embry.



In 2019, we've had girl scouts, boy scouts and eagle scouts from over 10 different troops involved in our volunteer program. Here's to inspiring the next generation of gardeners!

**We Sincerely Appreciate
our 2019 Community &
Corporate Partners!**

Against the Grain Brewing
Anderson's Sales and Service, Inc.
Blue Grass Motorsport
Bob Ray Company
Brown-Forman
Carl Ray Landscape Nursery
Churchman Electric and Technologies
City Girl Farm/ Hagan Properties
Commonwealth Bank and Trust
Commonwealth Theatre
Churchill Downs, Incorporated
Digs Home and Garden
Dinsmore & Shohl LLP
Dwyer DesignScapes
Dale and Donna Gettelfinger Family
Fifty Chairs
Gravelly Brewing
Greenhaven Tree Care, Inc.
Insuramax
Kentucky Artisan Distillery
Kentucky Select Properties
Lenihan Sotheby's Realty
LG&E & KU Foundation
Merrill Lynch
Morris Deli & Beverage Catering
Natural Products
Outdoor Lighting Perspectives
Oxford Garden Furniture
Parthenon, LLC
PNC Asset Management Group
Project Guild of LaGrange
Red Pepper Deli
Robert H. Deibel Greenhouses
School of Rock
Sentry Steel
South Oldham Fire Department
South Oldham Rotary
Sounds Unlimited Production
Springhouse Gardens
Stites & Harbison PLLC
Alan Thompson
Thorne and Sally Vail and their children
Liz and Shep
United Mail
Meg Vogt

**Honoring Former Board
President Phil Payne, Jr.**

Phil Payne, Jr. has long served as an advocate and Board Member for Yew Dell. In honor of his leadership and dedication in serving Yew Dell and in recognition for his term as Board President from 2015 - 2017, the members of our Board of Directors, staff, and his friends from his former company, Doe Anderson, contributed to engage local artist Joe Autry to make a one-of-a-kind bench for this one-of-a-kind person! Phil always knows just the right words to convey Yew Dell's sense of whimsy and charm, and we could think of no better way to honor him than a whimsical bench, sculpted to mimic Yew Dell's pine cones, holly leaves and yew trees. Thank you for your ongoing service to Yew Dell, Phil!



 **Natural Products** LLC.
NATURALPRODUCT@BELLSOUTH.NET

ORGANIC RECYCLING • HARDWOOD MULCH • CEDAR MULCH
SAND • LANDSCAPE MIX • ORGANIC COMPOST
TOPSOIL • DECORATIVE ROCK • DELIVERY
COMMERCIAL & RESIDENTIAL 

WWW.NATURALMULCHLAGRANGEKY.COM

OFFICE: 502.222.4545 2800 INTERIOR WAY
FAX: 502.222.1963 LAGRANGE, KY 40031

 **Paul Clinton**

**Beechwood
Trees & Gardens**
bwtrees.com

Arborist and Gardener Services Since 1988
pclinton@bwtrees.com ☎ Office 241-0471 ☎ Cell 296-3825

A HUGE THANK YOU TO OUR SPONSORS FOR MAKING BOO DELL SUCH A GREAT COMMUNITY EVENT!



Presented by:
CHURCHILL DOWNS
INCORPORATED

Gold Sponsors:
LGE and KU Foundation **Dwyer DesignScapes**

Silver Sponsors:
INSURAMAX **Yew Dell Botanical Gardens**



THANK YOU TO



Commonwealth
Bank & Trust Company

FOR YOUR SUPPORT OF

Yuletide **at**

YEW DELL
BOTANICAL GARDENS

Certified Arborist On Every Job.



LimbwalkerTree.com

502.634.0400

DONOR SPOTLIGHT

YEW DELL WELCOMES NEW CORPORATE PARTNER CHURCHILL DOWNS



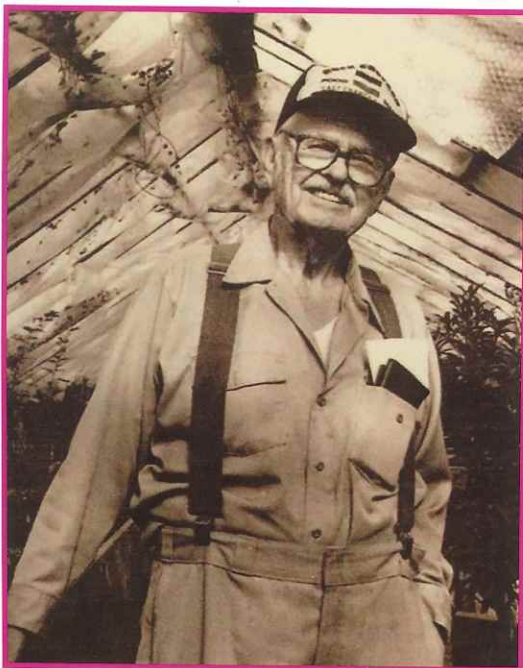
CHURCHILL DOWNS INCORPORATED

As a nonprofit, Yew Dell relies on sponsorships from our wonderful community partners to bring you fun events throughout the year while keeping the cost of admission low for our community. This year, we were delighted to welcome Churchill Downs, Inc. as our new Title Sponsor for our popular Boo Dell event. In their role as an industry leader, Churchill Downs does not neglect their responsibility to take care of their surrounding community and upholds a strong corporate social responsibility dating back to the 1930s. Churchill Downs donates up to \$2 million in financial and in-kind contributions annually, all benefiting the Commonwealth!

The importance of Yew Dell Gardens was brought to the attention of Churchill Downs through House Speaker David Osborne and his wife, Lori, who are horse owners and supporters of Yew Dell. Churchill Downs said “We appreciate the Osbornes for introducing us to the good work being done at Yew Dell. The Boo Dell event showcased what is best about community. It was refreshing to see hundreds of families come out to enjoy fellowship with one another away from the many distractions of modern life. Yew Dell, like Churchill Downs, provides a venue for people to spend time outdoors in the presence of friends and family.”

Churchill Downs not only sponsored the event, allowing us to add new and exciting experiences like a stilt walker and creepy bugs with Idlewild but they also sent staff out to set up a booth and pass out candy along our Trail-O-Treats. Betsy Janes, Churchill Down’s Government Relations Director said “The best part of the event was seeing the kiddos decked out in their Halloween best, especially one little tyke dressed as a jockey riding a horse! Thanks to Yew Dell for allowing us to be a part of such a positive event.” On behalf of all of Yew Dell, thank you Churchill Downs for helping us grow this winning family event!

PLANNED GIVING & YEW



“Legacy. What is a legacy? It’s planting seeds in a garden you never get to see.” - Alexander Hamilton

What does this quote from one of our American Founding Fathers have to do with Yew? The answer is lots! We have an amazing picture of Theodore Klein, the gentleman and nursery industry giant who started Yew Dell, sowing oak seeds in his greenhouse. The amazing thing about this is that Theodore is into his 90s at the time of the photograph. And as even the least savvy gardener among us knows –oak seeds take many years to grow and mature into big oak trees. Theodore knew he would never sit under the shade of those oak trees but he sowed the seeds anyway. He knew someone, someday would benefit from that small act of hope and love. At the time, he also didn’t know that his family nursery business would one day be a nonprofit botanical garden that carries on his legacy of horticultural and gardening excellence.

A planned gift is just like this. It is a gift you give in your will, a seed of support you sow for the future you won’t get to see. Unlike giving during your lifetime, a planned gift will not take away from any income or assets you currently have. Once you have passed away, a gift from your estate becomes part of your personal legacy and ours. This support is vital to keeping our gardens growing and thriving for the next generation and beyond. If you would like to talk more about leaving a legacy to Yew Dell through a planned gift, please give us a call at 502-241-4788 today.



YEW DELL BOTANICAL GARDENS

6220 Old LaGrange Road • Crestwood • Kentucky • 40014
yewdellgardens.org

NON PROFIT ORG
U.S. POSTAGE
PAID
Louisville, Ky.
PERMIT #879



Yew Dell Botanical Gardens is a partnership project of the Garden Conservancy, a national, non-profit organization founded to help preserve America's exceptional gardens.



wander
learn
grow



YEW DELL BOTANICAL GARDENS

January • February • March 2020

STAY CONNECTED TO THE GARDENS ON SOCIAL MEDIA



www.facebook.com/YewDellGardens



@YewDellGardens

We Love Seeing Our Visitors' Photos! #YewDellGardens

DON'T MISS OPENING DAY!

SATURDAY, MARCH 28, 2020; 10 AM – 4 PM

SPECIAL THANKS TO:
United Mail, Inc.