



# YEW DELL BOTANICAL GARDENS

July • August • September 2018

Donor Spotlight – Jean Ohlmann **5**

*Calycanthus floridus* 'Burgundy Spice' **6**

Yew Dell and Anchal: A Natural Collaboration **9**

*Asclepias tuberosa* - butterfly milkweed

# LETTER FROM THE DIRECTOR

## There is MAGIC in the Garden...

Myrmecochory – it's a heck of a word. But it's one of those amazing plant/animal kingdom things that seems to me to be just... well... magic. Trilliums bear seeds with lipid-rich elaiosomes – essentially compact little energy bars – that attract ants and form the basis of a wonder-of-nature seed dispersal system. You just never know where the next great symbiotic marvel is gonna show up.

Well, synergies seem to be the order of the day around here. This spring and summer Yew Dell paired up with **Om Sup Yoga** to offer Friday morning yoga sessions in the inspirational confines of the Gardens. We have a killer volunteer gardener group evaluating new plant varieties – part of a project that involves other plant evaluators across the US.

And how's this for a synergistic project... **Former Yew Dell summer intern Colleen Clines** went on to found the Anchal Project, a non-profit that helps women in India recover from trafficking circumstances through designing, making and selling

fabulous textile products. Anchal needed more plant based dyes. A local girl scout needed a Gold Award project. And Yew Dell knows how to grow plants.

The result... we now have several raised beds built by **Girl Scout Gold Award** candidate Kelly Weatherton. Our Saturday morning **Children in the Dell** kids are growing sunflowers and marigolds in those raised beds. The good folks at the Anchal Project will lead a combined extraction effort to produce plant-based dyes that will end up in Indian textile products. And the whole string of work will help others get a new start in life.

I call that... well... magic!

Happy Gardening...  
*Paul Cappiello*  
Executive Director



### ON THE COVER: *Asclepias tuberosa* - Butterfly Milkweed

This Kentucky native is common in open fields and along unmowed highways across much of the southern and eastern US and eastern third of Canada. Its brilliant orange flowers make it an excellent early summer garden plant. Foliage is an important food source for monarch butterfly larvae and its flowers are an essential nectar source for monarchs and many other butterflies.

**Yes, I would like to help Yew Dell GROW ON with an Annual Campaign gift!**

Name \_\_\_\_\_

Amount \$ \_\_\_\_\_

Address \_\_\_\_\_

Payment: Amex / VISA / MasterCard / Discover / Check

City \_\_\_\_\_ State \_\_\_\_\_ Zip \_\_\_\_\_

Card Number: \_\_\_\_\_

Phone (\_\_\_\_) \_\_\_\_\_

Expiration Date: \_\_\_\_\_ (MM/YY) CVC: \_\_\_\_\_

Email \_\_\_\_\_

Signature \_\_\_\_\_

You may also donate online at: <http://www.yewdellgardens.org/donate.html> or by calling 502.241.4788

**COME OUT AND PLAY IN THE GARDEN!**



**GARDEN  
GAME  
DAY  
AT YEW DELL**

**SATURDAY, JULY 21  
NOON - 4PM  
YARD GAMES**

**BEER • FOOD**

**MUSIC BY  
DANNY FLANIGAN + LITTLE BAND  
1 - 3 PM  
FREE WITH REGULAR ADMISSION!**

暮

Brown-Forman's

*Twilight* in the  
*Garden*

*Save the Date*  
Friday, October 5, 2018

# 2018 SUMMER EVENTS AND CLASSES

Watch for emails and check our website for complete descriptions, program updates and additions.



## Children in the Dell Saturday

Now through August 25;

10:30 am - noon

*Free with the admission of a parent or guardian*

Join our usual merry band of kiddos in the Children in the Dell World Headquarters (aka the log cabin) rain or shine! This popular Saturday morning program is the perfect opportunity to give children a chance to spend some time with all that is green. Our energetic and creative educators will engage the children in everything from planting and growing veggies to nature-inspired scavenger hunts, and a whole lot more. Whatever happens to be in season will be the topic du jour. Intended for children from 5-10 years old. Parents must stay on the grounds and are invited to participate in the day's activities. Preregistration encouraged – drop-ins welcome as space allows.

## Garden Game Day

Saturday, July 21; 10 am – 4 pm

*Free with Regular Admission*

Ever wonder what it would be like to play croquet, badminton or Frisbee jam, but never had the chance? Maybe board games are more your style – well we are taking Yahtzee, Twister and Jenga outside! This event is your chance to bring your friends and family for a day in the garden playing a variety of classic and maybe soon-to-be classic games. Danny Flanigan +Little Band will provide live music from 1 - 3 pm and adult refreshments and basic picnic fare and beer will be available for purchase.

## Build Your Own Fairy Garden

*Instructor: Greenhouse/  
Nursery Manager, Jacob  
Stidham*

Thursday, July 26; 6 - 7:30 pm

\$25/\$35 Members/Non-members

Here is your chance to enter the ethereal world of fairies. This hands-on Fairy Garden building class will walk participants through the construction of their very own take-home container Fairy Garden. The class will feature all natural materials and will give you an opportunity to let your creative inner-fairy flow.



## Art Makes a Return to Yew Dell –

*Laurie Tennent Botanical  
Portraits*

If you've been missing the annual garden sculpture show you're not alone. We've missed it too. So this year we're bringing art back to the Garden with a one-woman show all season long.

Laurie Tennent is an astonishing talent who works with camera, garden and giant sheets of aluminum. Her printed botanical photographs are uber sized and can be placed indoors or out in the garden! Her close up and hyper-detailed images of ferns, flowers and more are completely unique and we're sure they'll be a giant hit.

All pieces will be for sale with proceeds benefiting Yew Dell's ongoing programming. Be sure to check it out now through October.

## Thursday Evenings in the Garden! Now through August!

*First Furry Friendly Thursday*

Thursday, August 2; 5 pm

Beer & Wine from our friends at 3rd Turn Brewing starting at 5pm. The first five dogs get a free Yew Dell bandana. Take a stroll or go for a hike. Meet the good folks from Paws with Purpose. All dogs must be leashed and cleaned-up after.

## Second Summer Saunter – Plant Walk

Thursday, July 12 & August 9

Come for an informative and entertaining plant focused walk with our Horticulture staff leading the way. Each one will highlight the garden marvels of the month and will feature garden tips and Q & A.

## Third Thursday Tunes

**Beer – Wine – Food** from our friends at 3rd Turn Brewing starting at 5 pm

**Music** 6 – 8 pm

• Thursday, July, 19

*Billy Goat Strut Revue – Classic New Orleans jazz with a touch of Kentucky twang.*

• Thursday, August, 16

*Laurie Jane & the 45's – Country soul, rhythm and blues, and rockabilly.*

## Fourth Fairy Fun Thursday

Are you or your kiddos fairy garden fans? Come out for a hands-on opportunity to get acquainted with fairy garden life and its creatures and take part in our hands-on Fairy Fun activities.

• Thursday, July, 26 - Will feature a Build Your Own Fairy Garden class, please see above for details.

• Thursday, August, 23 - Volunteers will be on hand to guide visitors through the Fairy Forest.

## Seventh Annual South Oldham Rotary Bourbon & Wine Experience

Friday, September 7: 6:30 - 9:30 pm

\$25/\$35 Members/Non-members

The South Oldham Rotary Club is hosting their Seventh Annual South Oldham Rotary Bourbon & Wine Experience at Yew Dell Botanical Gardens. What better way to spend the evening than strolling thru beautiful Yew Dell Botanical Gardens viewing the grounds and plantings, while having the opportunity to taste over 80 varieties of bourbons, wines, vodkas and moonshines and partake in catered *hors d'oeuvres* by Ladyfingers Caterers? A silent auction, as well as live music by The Misty Mountain String Band add to the entertainment. Proceeds will benefit local and international projects. Tickets are \$75. Tickets can be purchased online at [www.southoldhamrotaryevents.org](http://www.southoldhamrotaryevents.org).

## Boo Dell

Saturday, October 27

11 am – 2 pm – Trail o’ Treats and other fun activities!

2 - 3 pm – Mr. Magic performs!

Free with Regular Admission

## Awakening The Writer Within

Saturday, October 14: 9 am - 3 pm

\$50 Members/\$60 Non-members

*A Day Retreat. A Cabin.*

*Botanical Gardens. A journal. A pen.*

*And the precious uninterrupted time the writer in you longs for.*

Are you a beginning writer or have been at it for a while and feel ready to be re-inspired? This lively experiential retreat with writer, poet, songwriter and lover of the natural world Pamela Jay, will help you reconnect with nature and your own inner nature, open up your imagination, quiet your pesky inner critic and liberate the writer within you! To register or for more information contact: Pamela Jay at [slowdownpj@gmail.com](mailto:slowdownpj@gmail.com). [www.pamelajay.com](http://www.pamelajay.com)

## DONOR SPOTLIGHT – JEAN OHLMANN



*Jean Ohlmann and Yew Dell Executive Director Paul Cappiello at the Secret Garden dedication ceremony.*

When Jean Ohlmann puts her mind to something... well... she puts her mind to it. Ask anyone who knows her and the response always involves words such as amazing, unbelievable and inspiring. Jean was a chemical engineering graduate of UofL's Speed School... back when women just didn't do that kind of thing. She went on to an engineering career but eventually turned her attention to her love of gardening.

A list of Jean's service and recognition in the garden world would fill this entire newsletter... so just a few highlights. An accomplished potter and flower arranger, Jean first joined a garden club in 1963. From there she went on to be a national committee leader for National Garden Clubs (with over 180,000 members!), president of the local Rambler's Garden Club (3 times), a constantly in demand

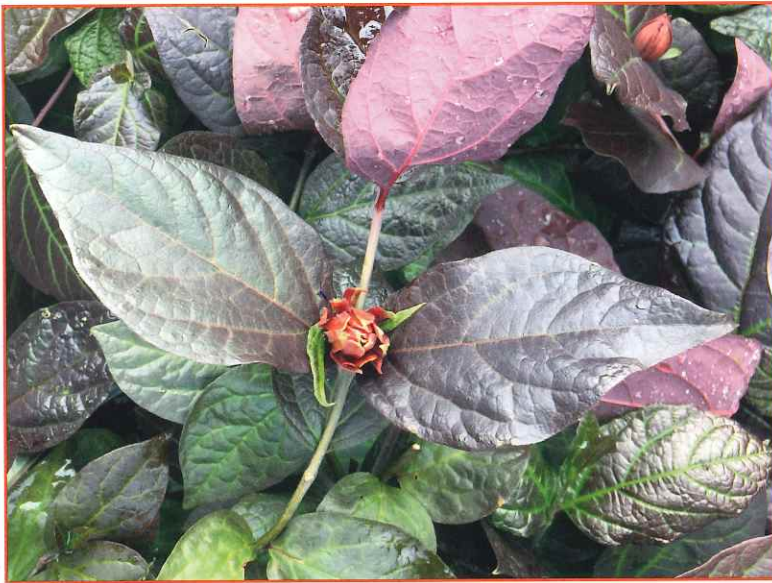
workshop leader and presenter locally and nationally on topics ranging from flower arranging to Hosta College, president of the Midwest Peony Society and chair of just about every national effort offered by National Garden Clubs. Having routinely offered NGC reports in rhyme, she was asked and recently co-wrote a children's book (*The Frightened Frog*) for NGC.

Jean's love of Yew Dell began with an encounter with Theodore Klein, "Theodore Klein did a program for our Rambler GC and invited us to Yew Dell. This huge, gentle man made an impression that was unforgettable... Yew Dell became very special. This was a place that I wanted all my horticulture contacts to know about. Dr. Paul Cappiello helped me make that possible. He always found time for my visits and whatever else I asked... including a South Atlantic Region meeting as well as a 2016 national meeting for National Garden Clubs."

Jean recently made another big splash with a \$650,000 gift to Yew Dell, much of which will go to create an endowed fund to support the Secret Garden, a space her garden club adopted back in 2003 and continues to help maintain. A ceremony in honor of Jean and her generous gift was held this spring with many of her friends there to celebrate with her.

Thank you, Jean, for your tremendous generosity!

## *Calycanthus floridus* 'Burgundy Spice'



If there ever was a Golden Age of New Plants, we're certainly right smack in the middle of it. The rate of new plants being collected overseas, cultivars being introduced to the market, plant breeding in everything from sweet corn to dogwoods... has never been greater. But often times the development and introduction of a new plant variety seems to be one of those black boxes of horticulture. So here's a storyline to shed a little light on one example.

*Calycanthus floridus* (sweet shrub) is a wonderful garden shrub – a darling of the native plant world. Growing 6-8' tall and wide, it grows in sun to part shade, heavy to somewhat dry soils and is highly pest (deer!) resistant. Its late spring blooms are deep burgundy colored with an enigmatic fragrance that is variously described as everything from elementary school paste to strawberries to gin & tonic! It has excellent yellow fall color.

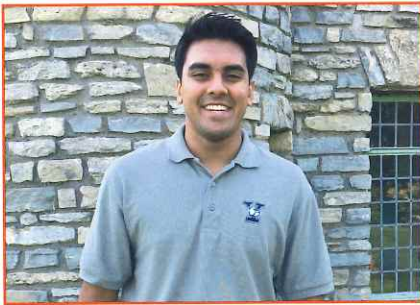
There are a few excellent Sweet Shrub cultivars on the market including the chartreuse flowered 'Athens' and Allen Bush's excellent 'Michael Lindsay' that offers stunning, glossy, dark green foliage.

But for years there's been a weakly colored burgundy form (*C. floridus* var *purpurescens*) floating around botanical gardens. The leaf color was only obvious on close... very close... inspection – and even then it wasn't very impressive.

But a very talented grower and plantsman, Rich Hesselein of Pleasant Run Nursery (NJ), started growing out seed populations of the purple leafed form. Each year he'd pick out the seedlings with the best color. He'd grow them out for a few years and then collect seed from those seedlings. And after a number of generations he produced what has become one of the hottest shrubs on the market among today's horticultural glitterati.

*Calycanthus floridus* 'Burgundy Spice', while still quite hard to find, has stunning, deep burgundy leaves with color that lasts all through the growing season. It's a vigorous grower. Has typical blooms (that admittedly disappear a bit on the deeply colored foliage), fragrance and stands like a burgundy beacon anywhere it's planted in the garden.

So how did Yew Dell get in on this fab new offering? Well we're longtime friends with Rich and his clan of uber plant geeks so he offered to hold a few for us. Then, we pressed another plant geek friend into service to pick up a batch at the nursery in NJ and drive them back here to Crestwood! A bit of a *Calycanthus* black market highway! And now... we're growing as many as we can!



## INTRODUCING OUR 2018 YALE BULLDOG INTERN FOR 2018

Neehaar Gandhi is a freshman at Yale University and is picking up the QR code program and taking it to the next level. Neehaar is coordinating new QR signage and the addition of audio to the QR code experience. He is very well versed in Google applications, Wordpress and to top it off he is a talented photographer! Neehaar said, "My favorite thing about Yew Dell has been the opportunity to merge my academic and personal interests; while I'm primarily doing backend software development and management through my internship, I've also been able to spend a good deal of time outdoors taking pictures and interacting with nature." Neehaar is a wonderful addition to Yew Dell!

In his spare time he likes hiking, watersports, playing the cello, taking pictures and is an avid fan of sports, especially college football (Roll Tide!) and NFL (Go Bills!). When asked about his time in Louisville Neehaar commented, "My favorite thing about Louisville so far is that it's the perfect mix of suburbia and the city; it's always happening, yet easy to get away to peace and quiet."



## NEW HORT APPRENTICES GETTING THEIR HANDS DIRTY

If you haven't met our new hort apprentices you're missing out. Issac Lechner and Isabel Branstrom started their 12-month posts in May and have been setting the place on fire. Their first Thursday night plant walk was a huge success with a great crowd, some amazing plants and fresh made blueberry/buckwheat scones right out of the intern house kitchen!

Isabel's focus is plant evaluation and her year-long project will be helping us to draft our long term plant evaluation plans. Her favorite thing about Yew Dell so far... "I love the culture of Yew Dell and the educational spirit that drives it. It's a place to ask questions, try new things, find your plant nerd flag and then let it fly."

Issac is our budding (sorry!) designer who has been expanding his plant palette at a furious pace. He simply describes his early Yew Dell experience this way, "As a horticulturist, the beauty of Yew Dell inspires me to want to learn more about plants."

Be sure to seek them out next time you're on the grounds. You're sure to learn something!



*Thank You to Our  
Farm to Table Supporters*

### *Table Sponsors*

Anne & Mike Hampton  
Lenihan Sotheby's/Limestone Title  
Sterling G. Thompson Insurance  
Stites & Harbison  
U.S. Bank

### *Farmer in The Dell Sponsor*

[euniceray.arbonne.com](http://euniceray.arbonne.com)

### *On Kind Donors*

Black Hawk Farms  
Creation Gardens  
Dozens of Dollars  
Happy Jacks  
Lakshmi Farms  
Liège & Dairy Ice Cream and Waffles  
Michaëlis Events  
Rental Depot  
Southern Classic Rentals  
Third Turn Brewery



# VOLUNTEER SPOTLIGHT



Oldham County Master Gardener, **Susan Lancaster**, first became involved as a volunteer in 2016 at our annual Plant Sale. Her involvement then skyrocketed in 2017, donating a generous 82 hours of time. Susan is involved in a variety of projects including the All American Selection Trial Beds, the Overlook Garden, tour guide program and special events. Along with other dedicated Oldham County Master Gardeners, Susan has breathed new life into the Overlook Garden. She comes every Thursday morning during our growing season to weed, mulch and do whatever else is necessary to keep her adopted garden beautiful. She guided 8 tours in 2017, a few of which were Second Saturday tours. We are so lucky to have Susan involved. Her kindness and enthusiasm for Yew Dell provides a very enjoyable experience for our visitors. Thanks for keeping our gardens growing, Susan!

## UPCOMING VOLUNTEER OPPORTUNITIES

### *Weekly Workdays 10 am-Noon:*

**Arboretum Tuesdays:** Join our rugged crew of dedicated volunteers to help remove debris and invasive plants in the Arboretum.

**A note from our Curator, Debby Levine** - Just two hours a week in the arboretum will make a difference that will last all year. We'd love to have you volunteer to help on Tuesdays from 10 am -12 pm.

**Garden Wednesdays:** Work alongside our terrific Garden Manager, Sayde Heckman, and talented Horticulture Apprentices, Isabel Branstrom and Issac Lechner in the garden.

**Nursery Thursdays:** Work alongside our fun and knowledgeable Nursery Manager, Jacob Stidham.

**Garden Adoption Program:** If you are interested in learning about and caring for a specific garden or collection this is your spot!

**Corporate/Group Volunteer Opportunities:** Looking for a place to do a Corporate Volunteer Project? Volunteer group efforts can be arranged at a range of expertise levels from general to highly specialized, depending on the group's interests and abilities.

**Volunteer Orientation:** Orientations are the second Thursday of every month from 5-6pm.

Please contact our Volunteer Coordinator, Lindsay Duncan, at [lindsayd@yewdellgardens.org](mailto:lindsayd@yewdellgardens.org) to receive more information.

### VOLUNTEER HIGHLIGHTS



Kelly Wetherton built 4 raised beds behind the log cabin for her Girl Scout Gold Award project! In collaboration with another local non-profit, Anchal Project, Yew Dell will grow marigolds in Kelly's raised beds that will be harvested and dried for natural dye. See page 9 to learn more about the Anchal Project!



Thanks to Linda Probus for helping Jamie clear out the smokehouse that will house the dried marigolds for the Anchal Project collaboration, Lulu Johnston for adopting all the Thursdays for Cultural Pass, Girl Scout Charlotte Wright for creating two fairy houses for our Fairy Forest, and Cullen Hunter for assisting Jacob in the Nursery!



Thanks to the Fairy Forest volunteers for sprucing up the houses, Debby Levine for creating wreaths to hang in the trees, and Dub Butler.



Thanks to Robin Macaione and Diane Tilton for bringing out their family to help maintain the Woodland Trails, Jacquelyn McGrail for recruiting Hostas of Kentuckiana members to help Yew Dell establish a Hosta Display Garden, to all the volunteers who attended the Volunteer Field Trip to the Highlands Farm and to the Walled Garden crew for always doing an amazing job!



# GROWING YOUNG GARDENERS

## YEW DELL AND ANCHAL: A NATURAL COLLABORATION



Magic happens frequently at Yew Dell. And when it does, it connects, stacks and builds faster than Legos in the hands of an 8-year-old. Our latest Adopt-A-Bed project is no exception.

Just 10 short weeks ago, Aimee Conrad-Hill, our resourceful Development Manager, was notified on social media that she and Colleen Clines, CEO of Anchal (pronounced ON- chal), an up-and-coming Louisville - based non - profit social enterprise, shared a work history at Yew Dell. As it turned out Colleen was one of Yew Dell's first interns!

When Colleen visited a few weeks later, she explained that her time at Yew Dell helped to fuel her passion for garden design which led her to becoming a landscape architect. Later, while on a life-changing trip to India, Colleen learned of women in need of help and changed her design course.

Anchal means "shelter", and addresses the exploitation of women around the world by using design thinking to create employment opportunities, services, and natural, wearable products that support empowerment.

Colleen, along with her sister, Maggie Clines, (who, it turns out, is an architect and had a hand in helping the firm that designed our state-of-the art greenhouse) have grown Anchal into a global initiative. Its goal is to employ over 300 women as Anchal revolutionizes the industrialized textile system and educates the community about sustainable textile practices. Due to Anchal's rapid growth, the dyeScape Project was created to form satellite gardens producing more flowers such as marigolds and sunflowers for natural dyes. Enter Yew Dell.

No sooner had we eagerly offered garden space near our log cabin, than Girl Scout Kelly Wetherton approached Lindsay Duncan, Yew Dell's Volunteer Coordinator, seeking a project to earn her Gold Award. Kelly met with Garden Manager Sayde Heckman for help with designing 4 raised beds and selecting marigolds and sunflower seed varieties. In a few short weeks, Kelly had successfully recruited volunteers (representing 3 generations) to help her haul lumber, construct and fill the beds with soil, and weed-proof the paths. Volunteers in our Second Saturday Workday program followed up by planting the seeds and they are off and growing!

Next, we are enlisting volunteers as part of our Adopt-A-Bed Program to help water and weed the marigolds and sunflowers and learn the process for harvesting and drying the petals which will then be used to create natural dyes to use in Anchal Project textiles.

Additionally, our little smokehouse has been cleaned out by Grounds Manager Jamie Pickerill and loyal volunteer Linda Probus and awaits its new purpose as a drying shed for our Children in the Dell programs.

So much magic. So many beautiful people. So Yew Dell. And it has only begun!

If you, or someone you know, would like to volunteer, contact [lindsayd@yewdellgardens.org](mailto:lindsayd@yewdellgardens.org).

# Louisville's Plant Health Care Experts



Protect your plants and help them grow. Limbwalker is now offering:

- Pest & Disease Preventatives
- Organic Fertilization
- Bio-Tea Compost Tea

**Call us today for a FREE Plant Health Care evaluation.**

[LimbwalkerTree.com](http://LimbwalkerTree.com)

**502.634.0400**



Paul Clinton

**Beechwood  
Trees & Gardens**

1988 - 2018

30 years serving Oldham County

For a free estimate on your tree or landscape needs call 241-0471

**WE FIND SOLUTIONS  
WHEN OTHER COMPANIES CANNOT**

**FULL SERVICE ELECTRICAL COMPANY  
COMMERCIAL AND RESIDENTIAL**

Design • Repair • Installation • Consultation

Call or Text 502-810-4682

[www.churchmanelectric.com](http://www.churchmanelectric.com)



**GREENHAVEN  
TREE CARE  
244-8770**

THIRTY - FOUR YEARS OF ARBORCULTURE

[WWW.GREENHAVENTREECARE.COM](http://WWW.GREENHAVENTREECARE.COM)

# HONORARY AND MEMORIAL DONATIONS

Purchase of a memorial/honorary bench has been and continues to be an excellent way to remember a loved one, mark a special occasion, or honor a valued friend. Contact a staff member for details.



## HONORARY GIFTS

*In Honor of Mary Rounsavall*  
R. Elliott Rounsavall  
Elizabeth Rounsavall

*Gifts received between 3/29/2018 – 6/25/2018*  
*We apologize for any errors or omissions in this list.*

## MEMORIAL GIFTS

*In Memory of Lynn Steinbock Timbrook*  
Bruce and Debbie Bunger

*In Memory of Lois U. Davis*  
Loretta Shearer  
Susan M. Bentley

*In Memory of Margaret and Greg Heirman*  
Drew and Sue Krueger

*In Memory of Mel Gregory*  
Joyce Gregory

*In Memory of Dennis Ronald "Chip" Heaton II*  
Phyllis Peklenk

*In Memory of Clyde Brewer Butler*  
Louise Brown

## cailin art studio

**Visual Art Studio** featuring  
classes, workshops, & event space

10% Discount: YewDell 18  
[www.cailinartstudio.com](http://www.cailinartstudio.com)



## Do you Enjoy Reading This Newsletter?

If you thought to yourself ... yes, I do, then we are so pleased. But we have a favor to ask. Would you mind looking on the label to check your membership status? If you are a current member, thank you for your support! If not, we hope you will consider renewing your membership. We love our current and previous members and want you to stay informed. Yew Dell has been growing and, to continue on that path, we need your support. Thank you in advance for your support!

## LEVELS OF GIVING

- Individual \$35
- Family (residing at the same address) \$50-\$149
- Silver \$150-\$499
- Gold \$500-\$999
- The Dell Society \$1,000- \$2,499
- Director's Circle \$2,500 and up

Name \_\_\_\_\_

Address \_\_\_\_\_

City \_\_\_\_\_ State \_\_\_\_\_ Zip \_\_\_\_\_

Phone (\_\_\_\_) \_\_\_\_\_

Email

AMEX VISA Mastercard Discover (CIRCLE ONE) Amount: \$ \_\_\_\_\_

Card Number:     -     -

Expiry Date:   -   (MM-YY) Security Code:

Signature \_\_\_\_\_

*For a list of membership benefits and more information about events and programs, visit our website at [www.yewdellgardens.org](http://www.yewdellgardens.org). Please return this form to:*

**Yew Dell Botanical Gardens**  
6220 Old LaGrange Road  
Crestwood, KY 40014



# YEW DELL BOTANICAL GARDENS

6220 Old LaGrange Road • Crestwood • Kentucky • 40014  
yewdellgardens.org

NON PROFIT ORG  
U.S. POSTAGE  
PAID  
Louisville, Ky.  
PERMIT #879



Yew Dell Botanical Gardens is a partnership project of the Garden Conservancy, a national, non-profit organization founded to help preserve America's exceptional gardens.



wander  
learn  
grow



## YEW DELL BOTANICAL GARDENS

July • August • September 2018



'LIKE' US ON FACEBOOK

Upcoming Events & Programs **4 & 5**

Upcoming Volunteer Opportunities **8**

**SPECIAL THANKS TO:**  
United Mail, Inc.