



YEW DELL BOTANICAL GARDENS

July • August • September 2015

Yew Dell launches new pavilion project

3

Meet our volunteer plant curator

6

It's bulb sale time!

8

Helenium 'Copelia'

LETTER FROM THE DIRECTOR

Things Continue to Bloom & Improve at Yew Dell...

Now that we're approaching the dog days of summer, you might think things will slow down a bit at Yew Dell . . . just like in winter, when people ask us what we do when there's supposedly nothing going on during the colder months. No, long gone are the days of an off-season or down time at Yew Dell. We've managed to fill in every corner of the annual calendar with programs, projects and plans.

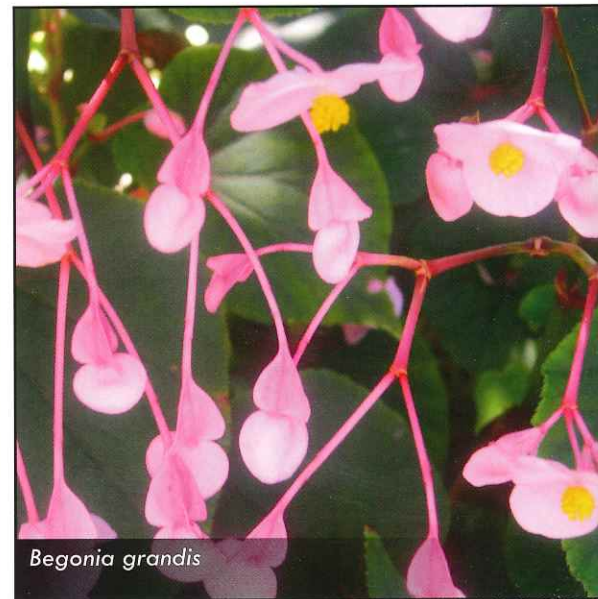
We were delighted to welcome our first international intern this spring – all the way from Dublin, Ireland. And we welcomed Leo in grand fashion, as he was the first resident of our brand-new, shiny intern house! That's right, we now have an outstanding four bedroom house (IHQ we call it – intern headquarters) right on the grounds, where we can house interns and apprentices to help grow our efforts to train the next generation of top gardeners (and you'll meet our new apprentice, Ted Martini, on page 6).

Right on the heels of the completed Horticulture Center and Intern Headquarters efforts, we've embarked on our next exciting project. On page 3, you'll get a first glimpse of the plans for our new event pavilion structure. For all those who have picked gravel out of their open-toe shoes or worried about tents blowing in a rain storm, fret no more. We're replacing the gravel pad and rental tents with a permanent structure, featuring a striking roof line and open sides. This stunning structure will be an elegant addition to the grounds and a wonderful event host for many years to come. Just one more of those little things we do during the dog days!

So if you want to see what a botanical garden looks like during down time, come pay us a visit! We'd love to see you.

Happy Gardening . . .

Paul Cappiello
Executive Director



Begonia grandis

JOIN US!

Yew Dell membership offers a wealth of benefits including admission all year long, discounts on Yew Dell classes, lectures and workshops, invitations to member-only events and early admission to the annual Plant Sale and Garden Market.

Members also receive discounts at area nurseries and garden centers and coupons and gift certificates for plants and garden supplies—membership pays for itself several times over!

All of our \$150 and above members will also receive a special plant dividend available only at our annual Plant Sale. For Silver Cloud and above memberships, we're even offering guest passes for your friends and family members.

Help us Keep in Touch!

If you have recently changed your email address, mailing address or don't receive any email from us- please let us know! Contact Kathy at kathyj@yewdellgardens.org or call 241-4788.

LEVELS OF GIVING

- Virginia Bluebells **\$35 (single)**
- Silver Cloud **\$50-\$149 (family)**
- Weeping Katsura **\$150-\$499**
- Golden-Berried Holly **\$500-\$999**
- The Dell Society **\$1000 and above**

Name _____

Address _____

City _____ State _____ Zip _____

Phone (____) _____

Email

VISA Mastercard Discover (CIRCLE ONE) Amount: \$ _____

Card Number: ---

Expiry Date: - (MM-YY) Security Code:

Signature _____

For a list of membership benefits and more information about events and programs, visit our website at www.yewdellgardens.org. Please return this form to:

**Yew Dell Botanical Gardens
P.O. Box 1334
Crestwood, KY 40014**

YEWDELLGARDENS.ORG

MEMBERSHIP FORM

Commonwealth Bank & Trust Company's 8th Annual Garden Sculpture Show September 1 - October 25



Colors of Life by David Caudill.

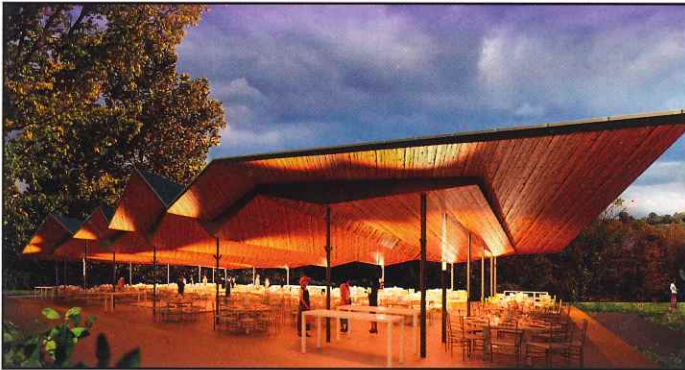
This year's Garden Sculpture Show will display a wonderful array of one of a kind garden sculptures from the region's most renowned and emerging artists, with David Caudill as our featured artist. Come by and visit the gardens to see the many wonderful works of art designed to transform your garden to an outdoor gallery.

Don't miss our opening reception to mix and mingle with the artists, preview the sculptures, and enjoy heavy appetizers and cocktails. The reception is Sunday, August 30 from 5-8pm. Any sculptures purchased during the opening reception will be discounted 10%.

For tickets (\$25/\$35 member/non-member) please call the office at 502-241-4788 or order online at www.yewdellgardens.org.

Thank you to our sponsors for their support: Commonwealth Bank & Trust Company, Ellen van Nagell RE/MAX 100 and Oldham County Educational Foundation.

NEW EVENT PAVILION DESIGNS UNVEILED



Pavilion view from walkway.



Pavilion view from north approach.

For the last 10 years, most large events at Yew Dell have had one thing in common . . . great big rented tents. And while the constant set-up and break-down, gravel surface and endless coordination has not been ideal, the arrangement has served us well through our early growth. But the time has come to step up our effort.

Earlier this year, we engaged our star architectural firm, deLeon and Primmer Architecture Workshop, to design a permanent pavilion structure with open sides (sides optional) to accommodate rentals and our own events as well. And as you'd expect, they've come up with something truly special. At the same time stunning and understated, the new structure will include a hard-surface floor, expanded restroom facilities, storage and lots of other bits that will make events easier to stage. The low-slung roofline will

work beautifully with the existing Gheens Barn and Peyton Samuel Head Trust Pavilion. In short, this new structure will complete the architectural framing of the whole event space.

One aspect of the project that makes us especially proud is that our Board decided to raise a naming gift in honor of our long-time former Board President, Mary Rounsavall. As most of you know, Mary's service has been exemplary and her work has been tireless. We all thought it fitting that the new project honor her long and selfless dedication to Yew Dell. And we're still fundraising . . . so if you'd like to make a gift in Mary's honor or to simply support the project, by all means give us a call! Groundbreaking is planned for this coming fall . . .

2015 Summer & Fall Events and Classes

Watch for emails and check our website for complete descriptions, program updates and additions.



Farm To Table Dinner

New Format, New Food, Never Better!

We switched things up a bit for this year's Farm to Table and it was a hit! Wiltshire Pantry and Red Hog/Blue Dog Bakery served fantastic food and Comfy Cow's ice cream was literally the Bee's Knees!

Yew Dell Botanical Gardens and Slow Food Bluegrass would like to thank our Farm to Table Dinner Supporters

Title Sponsor

Brown-Forman Corporation

Entrée Station Sponsor

Medical Transformation Center

Table Sponsors

Baptist Health LaGrange • Brinly-Hardy Co.

Foxhollow Farm • Gault-Marsh Properties

Mike & Anne Hampton • Jones Group

Nell Pearce Bradley, Lenihan Sotheby's Realty • Plumbers Supply Company

Schubert Realty & Investment Co.

Farmer in The Dell Sponsor

euniceray.myarbonne.com

In Kind Donors

All Occasions Event Rental • Bourbon Barrel Foods • Comfy Cow
Dozens of Dollars • Essential Details • Falls City Brewing Company
Old 502 Winery • Party Central Rental • Red Hog/Blue Dog Bakery

Thank You to Our Producers

Ambrosia Farm • Foxhollow Farm • Freedom Run Farm
Grateful Greens • Holden Farms • Red Hog Farm • Stone Cross Farm
Weisenberger Mills

Longtime Volunteer Coordinator Retires



After more than 10 years of service as Yew Dell's Volunteer Coordinator, Bonnie Heaton retired at the end of May. Bonnie has long been that kind and sweet voice on the other end of the phone that greeted visitors, would-be volunteers and others contacting Yew Dell to schedule group visits and attend events. She created and nurtured our volunteer tour guide group, managed the annual volunteer celebration and generally made all our volunteers feel welcome and appreciated.

In her retirement Bonnie is looking forward to spending more time with her children and grandchildren, traveling and, get this . . . spending time volunteering at Yew Dell! We wish Bonnie all the best in her retirement and thank her for all her hard work and dedication to Yew Dell.





AUGUST

The Hummingbird Festival is expanding to include Bees! The Hummingbirds & the Bees Festival!

Sunday, August 23; 3-6pm

Free with regular admission!

Since birds and bees have been associated as long as anyone can remember, we decided to include bees in our annual Hummingbird Festival! The hummingbird aspect of the festival will continue to offer the opportunity for all to learn about these amazing little birds, what makes them tick, how to attract them, how to keep them coming and a whole lot more. Local experts will catch and band birds, offering an excellent opportunity to see them up close and learn about hummingbird research.

The festival will be buzzing! Beekeepers Claude Nutt and Rodolfo Bernal will hold Q & A sessions and give presentations that will get you buzzing about bees. We'll also have for sale hummingbird and bee accessories and plants that attract hummingbirds and bees, kid's activities, refreshments, tours, and lectures that will get you in the know about the hummingbirds and the bees! Don't forget your camera and binoculars!

Commonwealth Bank & Trust Company's 8th Annual Garden Sculpture Show Opening Reception

Sunday, August 30; 5-8pm

\$25/\$35 - Members/Non-members

Join us for a delightful evening of cocktails, heavy appetizers from a variety of fabulous restaurants/caterers and the unveiling of the 2015 show. This year's opening reception offers attendees a 10% savings on all sculpture purchases made that evening. The juried show will offer garden sculptures in everything from glass and metal to stone and more. It is the perfect chance to enjoy great art, meet the artists and buy a piece for your own garden. Cash bar.

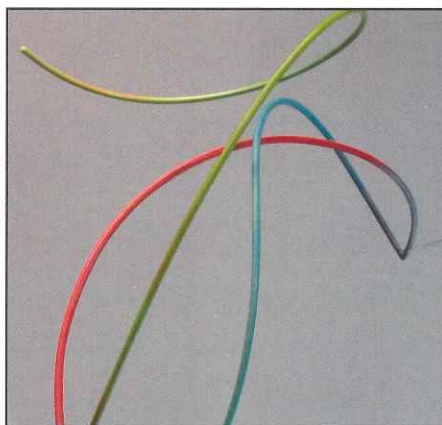
Commonwealth Bank & Trust Company's 8th Annual Garden Sculpture Show

Tuesday, September 1 through

Sunday, October 25

Free with regular admission!

Don't miss Yew Dell's 8th annual show that will feature some of the best sculptors in the region, headlined by Louisville's own David Caudill. Regardless of your preferred style or material, we're sure this year's juried show will have something to catch your eye. Whether you want to come out to enjoy the art or are looking for a piece for your own garden, be sure to visit during the two months of the show.



Light with Airs by David Caudill.

YEWDELLGARDENS.ORG

OCTOBER

BROWN-FORMAN'S TWILIGHT IN THE GARDEN



Friday, October 9; 6:30pm

Save the Date for Yew Dell's annual fundraiser and celebration of all things garden, featuring cocktails, a seated dinner prepared by Wiltshire Pantry and limited live and silent auction items (with some great trips on the auction block this year).

Boo Dell! at Yew Dell

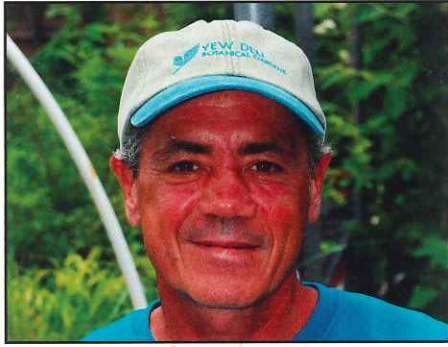
Saturday, October 31; 11am-2pm

Mr. Magic 2pm

This seasonal event is a frightfully-fun day and a family favorite! Mark your calendars and get your creative costume thinking cap on. Kids of all ages can enjoy trick-or-treating along the trail-o-treats (11am-2pm). Dozens of local businesses will entertain with their creatively creepy booths and costumes. Hayrides, a straw maze, scavenger hunts and the popular Mr. Magic will round out the day's activities with a performance from 2-3pm. This event draws a big crowd, so come early to get in on the goodies.

MEET YEW DELL

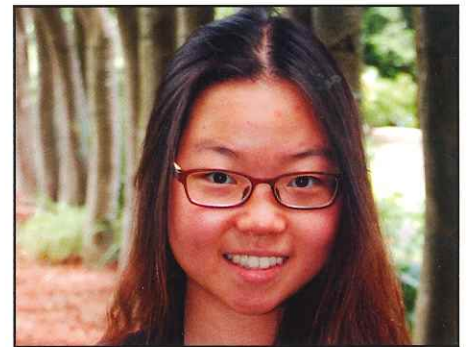
Meet Ted Martini



Ted hails from NYC, but comes to us by way of Beaufort, NC. In his previous life, Ted worked as a retail space designer for Barnes and Noble, Antique Boutique and other notable retailers in NYC. After moving to Beaufort, NC, to be closer to family, he owned and operated Backstreet Pub, a unique little watering hole in Beaufort frequented by coastal boaters and beachgoers. After many years of gardening for pleasure, Ted decided to pursue a formal education in the hopes of making his avocation become his vocation. He attended Sandhills Community College to study in their Landscape Gardening program. He's now working as Yew Dell's newest Horticulture Apprentice, where he hopes to incorporate his education and design experience to work towards a career in historic garden design and preservation.

Meet Sarah Yoo

Sarah is our newest 'Bulldog in the Bluegrass'. If you don't already know about this program, it's an intern program from Yale University that brings Yale students to Louisville each summer to intern at various organizations. We're fortunate Sarah chose Yew Dell as her intern destination this summer. She's working hard to help our staff develop new children's activities, marketing materials, data analysis and archiving materials we want to keep for future reference. Sarah is studying biology and is excited to also be working one day a week in our gardens where she'll gain hands-on practical gardening experience in addition to her office work.



VOLUNTEER PROFILE

Debby Levine; Volunteer Curator Extraordinaire

This spring we profiled one of our original and stand-out volunteers, Abi Rennekamp, who spent years developing and maintaining our plant collections database. That outstanding work has now been picked up and is being expertly guided to the next level by our new volunteer collections curator, Debby Levine.



Debby has been a regular volunteer since 2006, having been named Volunteer of the Year back in 2009. In that time, she has worked events and in the office, but her focus has been in the garden. Whether pulling weeds, edging beds, potting plants or reclaiming lost specimens, Debby has used her Master's Degree in botany to help us raise the horticultural bar at Yew Dell. Last year, she offered to pick up the plant collections curator post and has done so with great energy.

Debby's curation activity includes updating our MS Access database structure, tracking all our plant acquisitions, updating the inventory and, a huge effort, tracking and making labels for all the plants we bring in for our various plant sales. These efforts are essential in allowing us to do all our work, from caring for plants to tracking performance and evaluations and communicating with research collaborators. It's a giant job to say the least.

If you're looking for a project, want to learn some new plants and meet some new people, Debby could always use some help. Give us a call and we'll connect you!

GARDEN SMARTER, NOT HARDER...

Container Gardening Made Easy



Sedum rupestre 'Angelina'

One might be hard pressed to find a better plant for container gardening than the group of plants collectively known as succulents. Their adaptations to dry environments and diversity in color, texture, and form make them ideal candidates for life in a container. These fleshy-leaved plants actually thrive in the container environment, require a low amount of general maintenance and their stunning colors and unique shapes allow for endless creative opportunities.

In the horticultural sense, the term “succulent” is typically used to exclude cacti, despite the fact that cacti are succulent plants. The term is used to describe those plants with thick leaves and stems that act like water storage tanks. Taxonomically, succulents are often unrelated, but their ability to live in dry environments give many a similar appearance. Plants referred to as succulents can include *Aeonium*, *Agave*, *Aloe*, *Echeveria*, *Kalanchoe*, *Sedum* and *Sempervivum*.

Many succulent species are native to arid regions of the world and are found growing in porous, well-drained soils with low fertility. Given their need to survive in some of the toughest growing conditions on earth, succulents have evolved a number of water-saving strategies such as fleshy, waxy or hairy leaves and a compact growth form. Additionally, many species have shallow

roots that lie just below the soil surface. This proximity to the soil surface enables them to take up moisture from very small storms or even dew. Simply put, succulents are built to store water and grow in poor soils, making them exquisitely adapted to life in a container. For the gardener, this means they require less fuss than conventional container plant species.

A few things to consider...

Succulent Species:

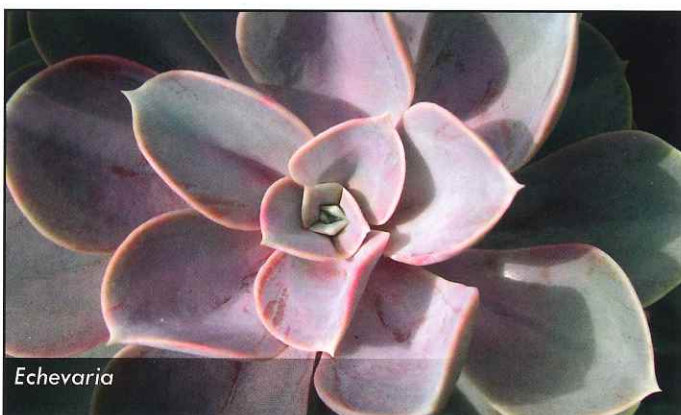
It is important to know the cultural requirements of any plant species when attempting to grow them in the garden. The same holds true for succulents. Succulents have a variety of cultural needs but can be placed into general groups based on their cultural requirements. As a general rule, it is best to group plants with similar needs within the same container. A little research early on will pay dividends later on in the growing season.

Containers:

Size – Given their drought tolerance, many succulents can be placed in much smaller containers than traditional container plant species. A word of caution...the smaller the container, the more frequent your watering schedule might need to be.

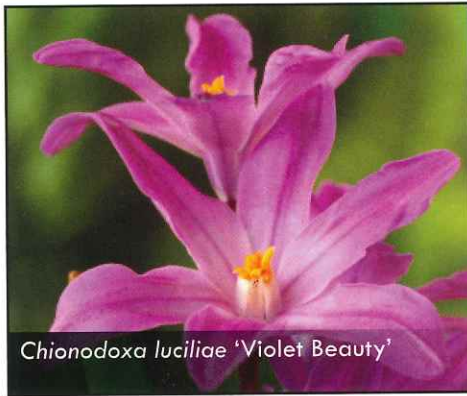


Agave ovatifolia 'Frosty Blue'



Echeveria

IT'S BULB SALE TIME AGAIN!



Chionodoxa luciliae 'Violet Beauty'

This year's trio is sure to offer a unique twist to your spring garden. All three species are easy to grow, reliable bloomers and deer resistant. Get your orders in fast, as these will sell out quickly! Once we have a ship date for all three, we'll set a pick-up date when you can come in, pick up your treasures and head home for some planting. Then you'll just have to sit back and wait to soak up the accolades next spring!

Chionodoxa luciliae 'Violet Beauty' is a noteworthy little selection with its pink-violet flowers and pink-white centers. A bit of a departure from the straight species, it still retains its durability. It's a reliable, early bloomer that will readily naturalize under the right conditions. This tough, pest-free bulb is sure to kick start the spring.



Narcissus 'Rapture'

Narcissus 'Rapture' is a charming departure from traditional narcissus varieties. A bit smaller in flower size, its perfectly formed flower showcases extremely reflexed petals and a long trumpet. Treat it as you would other narcissus varieties by planting it in full sun to part shade and enjoy the unique blooms once spring arrives.

Although not a new variety, it's hard to beat *Allium* 'Globemaster' when it comes to reliability and flower longevity. Blooming a bit later in the season (May), the 10" globe of lavender florets is perched atop a 24-36" stem that can withstand relatively strong wind gusts. Since it's a sterile hybrid and does not produce seed, the flowers can last several weeks depending on spring temperatures. This is sure to be a tried-and-true show-stopper in the garden.

Bulb tips:

Storage - If you find yourself without the time to immediately plant your bulbs, store them in a cool, dry location, such as a garage or basement, until you find the time to plant them.

Planting - Spring flowering bulbs should be planted prior to the ground freezing. Planting your bulbs in the fall rather than the spring is important because spring bulbs require a long period of cool temperatures to initiate the spring flowering process. Here in Kentucky, it is best to plant your bulbs between September and November.

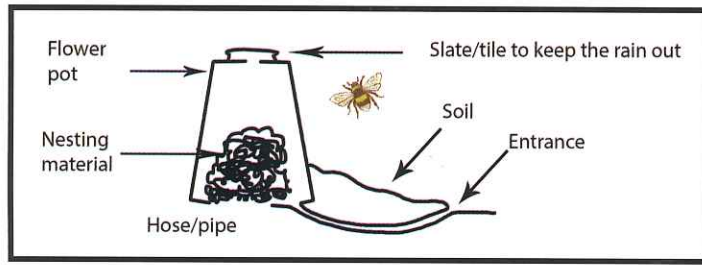


Allium 'Globemaster'

ANOTHER WAY TO SUPPORT YEW DELL!

On Thursday, October 1, Yew Dell will participate in the 2nd annual Give Local Louisville, hosted by the Community Foundation of Louisville. This 24-hour online "Give Day" encourages donors to support local nonprofits, helping create greater impact for our community. Nonprofits with the highest number of donations have the chance to secure additional prize funds, so please help support us! Donors with a Community Foundation Donor Advised Fund or Charitable Checking Fund have an additional chance to participate! Make a gift through your Community Foundation fund between Monday, August 3 – Friday, September 25 and your donation will be applied towards Yew Dell's donation total.

GROWING YOUNG GARDENERS



Make Your Own Bee Nest

You can help bumblebees by providing them with somewhere to nest.

The first step, of course, is to provide lots of the right kinds of flowers in spring. At this time of year, the nest-searching queen will be attracted to gardens where she can find plenty of food to help produce her first batch of eggs. Once she is ready to lay, the queen will start looking for a nest site. She flies low over the ground in a zig-zag pattern, stopping to investigate holes in the ground or piles of leaves.

We have teamed up with Hartley Botanic to create a guide to making bumblebee nests in your garden.

It can be quite difficult to encourage bumblebees to nest in a specific place; even specially designed nest boxes have limited success. However, here is a design to build a suitable nesting site in case you want to give it a go.

What you need:

- A flowerpot (> 20cm in diameter)
- A piece of slate/tile
- A bit of tube or pipe

Instructions:

1. Sink the upturned flower pot into the ground and use the slate/tile to cover any drainage holes to keep the rain out.
2. Run a hose or pipe underground to the pot, leaving a prominent entrance. Be sure to make drainage holes in the pipe.
3. Finally, fill with a generous handful of nesting material, such as old bedding from a pet mouse, guinea pig, etc.

Source: Chicago Botanic Garden website

Bumblebee Wordsearch

Find the bumblebee related words in the grid below.

N J B Q T H E A R L Y H Y W U O J I
 E H U L R N I J F F L O W E R L Q I
 S K M V C W D M V F P B V V K L N P
 T S B S N H O N B B X O W J I O E W
 R G L X B I D N K U N J L M R V C I
 X A E X D T S I P H F A I L V P T V
 W R B N R E B U Z Z G F W G E C A O
 D D E E R T R O E A B V T W J N R S
 U E E Q N A K H I B E R N A T I O N
 C N C U S I D K N S F K G X I Q C D
 S Q H E X L H Z I N S E C T L L M A
 N H W E W E A Q J L T M D W W Q E P
 C B V N A D R X R E D T A I L E D D
 D K W O R K E R O L H W K T I L G P
 I D P Y C O M M O N C A R D E R M B

Buff-tailed	Flower	Pollen
Bumblebee	Garden	Queen
Buzz	Hibernation	Red-tailed
Common carder	Insect	White-tailed
Early	Nectar	Worker

Source: bumblebeeconservation.org

For A Few Laughs

Q. Why did the bee get married?

A. *Because he found his honey*

Q. What do you call a bear without ears?

A. *B's*

Q. What do you call a bee born in May?

A. *A maybe!*

Q. What kind of bee can't be understood?

A. *A mumble bee!*

Source: jokes4us.com



Children in the Dell

Fun and educational programs
 every Saturday from 10:30 am – Noon
 Free with an adult guardian's admission
 Admission for Children under 12 is Free!

**YEW DELL OFFERS
 FUN ACTIVITIES FOR KIDS!**

Backpackactivities
 Bag, Book and Blanket
 Scavenger Hunts
 The Wild Woods

WONDER • LEARN • GROW

YEWDELLGARDENS.ORG

MORE WEEDS THAN
GRASS?

RENOVATE YOUR
LAWN



For more information, call
502.634.0400
limbwalkertree.com

Fully Insured
Locally Owned
Certified Arborists



Eco-Tech
CONSULTANTS

Restoring Kentucky's Native Landscape

We promote native plants and landscape restoration
to enhance and preserve natural wildlife habitats.

502-259-0454
www.ecotechinc.com

11321 Decimal Drive, Louisville, KY 40299

STIFEL

Investment Services Since 1890

David S. Whitty
Vice President/Investments
(502) 420-3247

600 North Hurstbourne Parkway • Suite 100
Louisville, Ky. 40222

Stifel, Incorporated | Member SIPC and NYSE

nature
BY DESIGN

Suzette White
Design, Landscape & Maintenance
502-222-4501
www.suzettesgazette.com

HONORARY AND MEMORIAL DONATIONS

Purchase of a memorial/honorary bench has been and continues to be an excellent way to remember a loved one, mark a special occasion, or honor a valued friend. Contact a staff member for details.



MEMORIAL GIFTS

In Memory of Anne Rives
Ms. Winslow Fairleigh

In Memory of Willoughby Blocker
Mr. & Mrs. Carl Prohaska

In Memory of John Caso
Baptist Healthcare Radiology
Directors
Baptist Health Corporate
Ms. Jan Eastburn
Mr. & Mrs. Zach Zoeller
Mr. & Mrs. Kevin Wardell
Mr. & Mrs. Brad Phillips
Ms. Laura Trachtenberg
Lynn & Mark Luking
Ms. Jacquelyne Richardson
Mr. & Mrs. Thomas Kelley
Mr. Kelvin Westbrook
D.J. Luther
Ms. Judith Petty

In Memory of the Honorable John Heyburn
Mr. & Ms. Wayne LeNeave

Ms. Kathy Bertolone
Mr. & Mrs. Robert Stenger
Mr. Rome Wadlington
David & Susan White
John & Dorothy Cummings
Ms. Treva Donnell
Mr. Elmer Allen
Mr. & Mrs. Chip Muzzey
Mr. & Mrs. Ron Deprez
Ms. Renita Bernat
Ms. Linda Hallman
Mrs. Jaymme Pederson
Mr. Charles Drexler
Centric Consulting, LLC

HONORARY GIFTS

In Honor of Blair Louis
Ms. Ruth Wisnom
Ms. Gail Cooke
Ms. Elizabeth Snellings
Ms. Randy Hunter

In Honor of Mary Rounsavall
Mr. Elliott Rounsavall
Ms. Rita Shea
Dr. & Mrs. Anthony George
Mr. & Mrs. Frank Harshaw
Mr. & Mrs. George S. Gibbs, III
Mr. & Mrs. Paul Keith, III
Ms. Stewart Lussy & Mr. Bob Jones
Mr. & Mrs. William Lomicka

In Honor of Bonnie Heaton
Mr. & Mrs. Robert W. Rounsavall, III

In Honor of Paul Cappiello
Mr. & Mrs. William D. Grubbs

In Honor of Rosemary & Lee Kirkwood
Mr. Arni Thorsteinson
Mr. Richard Andison

Gifts received between 3/24/15 - 6/22/2015. We apologize for any errors or omissions in this list.



**Beechwood
Trees & Gardens**

Since 1955

Special Offer for Yew Dell Botanical Gardens Members
10% off on Emerald Ash Borer Treatments

Call 241-0471 for details

**GREENHAVEN
TREE CARE**
244-8770

ARTISTS IN ARBORICULTURE
WWW.GREENHAVENTREECARE.COM



YEW DELL BOTANICAL GARDENS

PO Box 1334 • 6220 Old LaGrange Road • Crestwood • Kentucky • 40014
yewdellgardens.org

NON PROFIT ORG
U.S. POSTAGE
PAID
Louisville, Ky.
PERMIT #879



Yew Dell Botanical Gardens is a partnership project of the Garden Conservancy, a national, non-profit organization founded to help preserve America's exceptional gardens.



YEW DELL BOTANICAL GARDENS

July • August • September 2015



'LIKE' US ON FACEBOOK

The Sculpture Show is coming soon! 3

Meet our new apprentice & intern 6

Succulents - Tips for success 7

SPECIAL THANKS TO:

Publishers Printing and United Mail, Inc.