

April • May • June 2015



# YEW DELL BOTANICAL GARDENS

Celebrating  
Mary Rounsavall's  
Leadership

3

The 2015 Klein  
Award Winners

6

The Annual Plant Sale &  
Garden Market is  
Coming Soon!

7

*Magnolia xsoulangiana*  
Saucer Magnolia

6220 OLD LAGRANGE ROAD • CRESTWOOD • KENTUCKY • 40014 • 502.241.4788 • YEWDELLGARDENS.ORG



# CELEBRATING MARY ROUNSAVALL'S LEADERSHIP



Mary Rounsavall speaks at the Horticulture Center groundbreaking.

How can we even begin to thank Mary Rounsavall for her incredible devotion to Yew Dell? Since 1999, Mary has been one of the pioneering forces behind the effort to restore Yew Dell and preserve it for future generations. When Mary joined the Friends of Yew Dell community group that year, Theodore Klein had recently passed away and the grounds were in dire shape. Most of the historic buildings were badly deteriorated and the property was completely overgrown. It was in this context that Mary became our Board President, stepping up to that position in February 2001. Since then, Mary led the organization with a level of passion, hard work, and vigor unmatched by most. Her ability to guide strategic efforts and successfully fundraise helped us to achieve some of our most significant accomplishments: restoring the gardens, renovating the buildings, opening our doors to the public, and constructing our recently-built new Greenhouse. Transforming from an overgrown property to one of the top 20 tourist destinations in Louisville, the Yew Dell that surrounds us today simply wouldn't be the same without Mary's tremendous commitment and passion. After serving as our Board President for the last fourteen years, Mary stepped down from her post in January, when she was succeeded by another one of our all-star Board Members: Phil Payne, formerly our Board Vice President. Although we're very sad to see Mary depart from her role as President, we're thrilled that she will remain on the Board and serve as Chair of our Development Committee. Please join us in thanking Mary for her many years of leadership, dedication, and hard work. We will be forever grateful.

## YEW DELL AND SLOW FOOD BLUEGRASS FARM TO TABLE DINNER

Sunday, June 14 • 6pm



Guests enjoying the evening!



Farm to Table fun with Dozens of Dollars.

Yew Dell is planning the 5th annual Farm to Table dinner and it's sure to be a bountiful feast! Once again, Yew Dell will partner with Slow Food Bluegrass to bring together the finest in locally sourced foods, prepared by chefs who are in tune with the best of the best locally produced fare.

Wiltshire Pantry, Red Hog (Blue Dog's porcine cousin) and Comfy Cow will team up to provide a local farm-raised feast. Entrées will feature Red Hog pork, Stone Cross Farm beef, seasonal sides featuring vegetables from the area and Comfy Cow ice cream. Weather permitting, guests will enjoy dinner under the summer skies; if Mother Nature is grumpy, the event will be tented. Dozens of Dollars will provide lively entertainment with their blend of Americana roots and bluegrass inspired sounds. It's a fun and lively event and a great way to spend a Sunday summer evening. Tickets are \$100/\$120 members/non-members. For tickets, please call 241-4788 or visit our website at [yewdellgardens.org](http://yewdellgardens.org)

# 2015 Spring & Summer Events and Classes

Watch for emails and check our website for complete descriptions, program updates and additions.

## MAY

### Cutting Propagation

**Instructor: Mark Jarecki,  
Head Gardener**

**Wednesday, May 6; 6-7:30pm**

\$25/\$35 Members/Non-members

Learn the tricks of the trade of plant propagation by stem cutting. Join Yew Dell Head Gardener Mark Jarecki for this hands-on propagation session. Participants will learn about the basics of rooting biology, root-promoting hormones, propagation facilities and more. After several weeks of rooting, participants will be able to take home their newly propagated plants.



### Edible Landscape Class

**Instructor: Hannah Barry,  
Horticulture Apprentice**

**Saturday, May 16; 10:30am - Noon**

\$15/\$25 – Members/Non-members

Horticulture Apprentice Hannah Barry will take the class on an edible plant walk around the grounds, finishing in the kitchen garden. The majority of time will be spent in the kitchen garden discussing techniques for space utilization, color and texture scheming, and methods for creating an aesthetically pleasing garden space with edible ornamentals. We will also discuss common uses for the edibles seen in class.

Attendees will go home with a list of edibles discussed in the class, basic descriptions and links to recipes, a free pass to return later in the season, and a small gift.

## JUNE

### Farm to Table Dinner

**Sunday, June 14; 6pm**

\$100/\$120 Members/Non-members

### Small Trees for the Residential Landscape

**Instructor: Paul Cappiello,  
Executive Director**

**Wednesday, June 17; 6-7pm**

\$10/\$15 Members/Non-members

Join Yew Dell Executive Director Paul Cappiello on this plant walk covering some of the most useful small trees for area landscapes. These plant walks are always lively, informative and entertaining and all will go home with a long list of new trees for the landscape.

## Garden Gift Shop – Open for the season!

There's one thing that is certain about Yew Dell's Garden Gift Shop.

There's never a dull moment when you stop by! That's because there are so many exciting, fun, interesting and useful things to see - and more importantly - to buy!

And this season doesn't disappoint with lots of fresh goodies for the house and garden already in the shop, with a whole lot more on the way. If you are looking for a special gift, we've got all the bases covered. There are children's games, home accessories and of course, garden related products and books.

We hope to see you soon. Remember, shopping at Yew Dell keeps the garden growing.

**Bring your kids, grandkids,  
nieces, nephews, and neighbors  
to this fun-filled FREE for the  
kids program!**

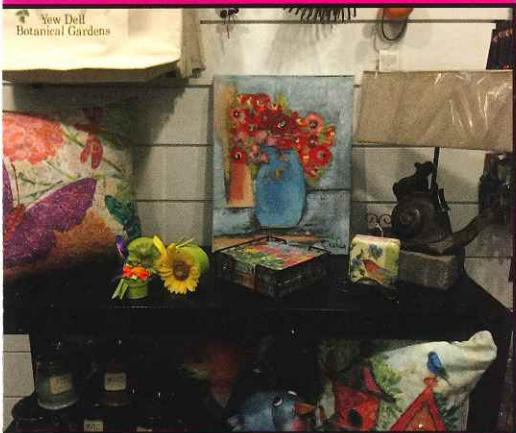


### Children in the Dell program begins Saturday, May 9; 10:30am-Noon

Free with the admission of a parent or guardian

*Every Saturday morning through the  
end of September*

Gardens, woods, trails and fields . . . these Saturday-morning classes are the perfect opportunity to give children a chance to spend some time with all that is green. Our energetic and creative educators will engage the children in everything from planting and growing veggies to nature-inspired scavenger hunts and a whole lot more. Whatever happens to be in season will be the topic du jour. Intended for children from 5-12 years old. Parents must stay on the grounds and are invited to participate in the day's activities. Preregistration encouraged – drop-ins welcome as space allows.



## Crestwood Festival

South Oldham Schools Campus on  
Hwy 146

Saturday, June 20; 10am–5pm

*Stop by and say hello! You might learn something new!*

## JULY

### Farm Fest The Maples in Crestwood

Saturday, July 11; 9am–6pm &

Sunday, July 12; 10am–6pm

*Stop by and say hello at this new  
Oldham County event!*

### Oldham County Day Event

Downtown LaGrange

Saturday, July 18; 9am–5pm

*Stop by and see us at our booth!*

## AUGUST



### Hummingbird Festival

Sunday, August 23; 3–6pm

Free with regular admission!

Always a summer favorite! Yew Dell's Hummingbird Festival offers the opportunity for all to learn about these amazing little birds, what makes them tick, how to attract them, how to keep them coming and a whole lot more. Local experts will catch and band birds, offering an excellent opportunity to see them up close and learn about Hummingbird research. We will have hummingbird plants for sale, kid's activities, refreshments, tours and as always, local hummingbird photographer Russ Thompson will be on hand to offer photography tips – so don't forget the camera and binoculars!



### The Commonwealth Bank & Trust Company 8th Annual Garden Sculpture Show Opening Reception

Sunday, August 30; 5–8pm

\$25/\$35 - Members/Non-members

Join us for a delightful evening of cocktails, heavy appetizers from a variety of fabulous restaurants/caterers and the unveiling of the 2015 show. This year's opening reception offers attendees a 10% savings on all sculpture purchases made that evening. The juried show will offer garden sculptures in everything from glass and metal to stone and more. It is the perfect chance to enjoy great art, meet the artists and buy a piece for your own garden. Cash bar.

### The Commonwealth Bank & Trust Company 8th Annual Garden Sculpture Show

Tuesday, September 1 through Sunday –  
October 25

Free with Regular Admission!

Don't miss Yew Dell's 8th annual show that will feature some of the best sculptors in the region. Regardless of your preferred style or material, we're sure this year's juried show will have something to catch your eye. Whether you want to come out to enjoy the art or are looking for a piece for your own garden, be sure to make it out during the two months of the show.

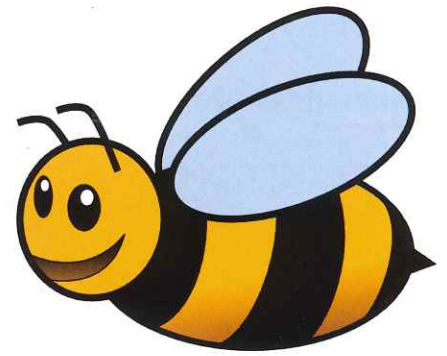
## OCTOBER

### Twilight in the Garden

Friday, October 9; 6:30pm

Save the Date for Yew Dell's annual fundraiser and celebration of all things garden, featuring cocktails, a seated dinner, and limited live and silent auction items.

YEWDELLGARDENS.ORG



### The Buzz on Yew Dell's Bees!

Spring has sprung and the winter snows have melted. We can finally shed our jackets and gloves and get back into the garden! But we're not the only ones eager to get out to the gardens. So are the bees.

This past autumn, Yew Dell partnered with local bee experts Claude Nutt and Rodolfo Bernal to establish a few hives of European bees, a variety known for having a gentle nature – and for being efficient pollinators. The new hives will be used for educational programs through the year . . . and, of course, to bolster the local bee population. Claude tells us, "The disappearance of honey bees is due to both happenings in nature and happenings attributable to human practices" and there's much we can do to help. He recommends using a diverse list of native and introduced plants in your garden, as more plant diversity gives local bees more options. Limit the use of broad-spectrum insecticides, and if you do have to use pesticide sprays in your garden, try to spray in the evening when bees are less active.

Remember, bee pollination accounts for at least 1/3 of food produced for human needs and we lowly humans can't come close to replicating the incredible efficiency of bee pollination!

## Promoting New and Superior Plants for Kentucky Landscapes

### Weeping Norway Spruce

*Picea abies* 'Pendula'



A weeping form of one of the most durable and adaptable conifers for the landscape, this selection is a standout for use as a specimen or focal point in the garden. It thrives in most soils including heavy clay and is quite drought tolerant.

### Trumpet Honeysuckle

*Lonicera sempervirens*

'Blanche Sandman'



This native vine is excellent for trellises and for scrambling over stone walls where it produces late spring/early summer trumpets of red, orange and yellow and sporadically through the summer. Best for full sun sites in any average soil.

### Spice Bush

*Lindera benzoin*



This large woodland shrub is native to Kentucky and throughout much of the eastern US, where it is the preferred host to the spicebush swallowtail butterfly. Subtle spring flowers of yellow-green have a light fragrance and yield scarlet fall fruit. An excellent choice for sun or dappled shade.

### White Oak

*Quercus alba*



This long-lived and durable shade tree is among the most attractive of the oaks. Broad-spreading limbs and leathery dark-green leaves offer excellent shade and beautiful texture. Adaptable to a wide range of soils.

### Green Cutleaf

Japanese Maple

*Acer palmatum* var *dissectum*  
'Viridis'



Of the hundreds of Japanese maples out there, this is one of the most attractive and dependable. With a mounded habit up to 8' tall and wide and finely dissected green leaves, the plant offers a unique form and texture for the landscape. Excellent fall foliage color of red, orange and yellow. Best in a moist rich soil and either full sun or part shade.

### Wild Ginger

*Asarum canadense*



The fuzzy grey-green, heart shaped leaves of wild ginger form a stunning mat of foliage up to about 8" tall. It is an excellent groundcover choice for any shady garden where it aggressively crowds out weeds. Small brown flowers form under the leaves in spring.



If you are even remotely interested in plants and gardens, Yew Dell's annual event has become the place to be each spring. Choice rare and fabulous plants, ample advice from knowledgeable staff and volunteers, top-notch vendors, the annual Bonsai Club show, food, kid's activities, and much much more will fill the last weekend in April to give you all you could want for the garden.

Plant offerings will include **Yew Dell tested winners, new to the market gems, unusual plants for collectors** – covering everything from trees to shrubs, vines, perennials, herbs, tropical, succulents and more. And plan to be here early for the best selection. Quantities are limited and the best choices sell out fast!

The event is scheduled for **Saturday, April 25 (10am–4pm) and Sunday, April 26 (noon-3pm)** and as always, **Yew Dell members get in at 9am Saturday** for the best selection – so make sure your membership is current and remember to bring your card! Of course memberships will be for sale beginning 9am Saturday!

### *A few Plant Sale list highlights . . .*

While we always have a long list of outstanding selections at the Plant Sale, this year we have some special offerings gardeners will want to note.

**Hydrangeas** – We love hydrangeas and know most of you do too, so this year we hunted for some of the best. From the much talked-about 'Ruby Slippers' oakleaf to Firelight® and Pinky Winky™ panicle hydrangeas, we're sure you'll find a few to take home.

**Coral Bells** – So many of the stunners out there on the market today just seem to melt in our Kentucky summer humidity. But we've doggedly tested and tested and the varieties we have this year have all performed admirably in the Bluegrass. 'Citronelle', 'Caramel', 'Midnight Rose' – you can guess the colors! Once established, their intensely colored foliage offers a season-long blast of charm.

**Witchhazels** – We continue to talk ourselves blue in the collective face about the merits of these outstanding garden gems. February/March blooms, brilliant fall foliage color, cultural adaptability . . . what's not to love. We'll have 'Primavera' and 'Pallida', two amazing yellow-flowered forms, plus a few others.

**Dogwoods** – Sorry, we just have dogwoods in our veins! We'll have the Stunning Venus® – a hybrid that develops 8"-diameter blooms! And we were able to find a few specimens of the very new and cool Variegated Stellar Pink! And for our native flowering dogwood . . . we have 'Appalachian Joy' one of the very best new and highly disease resistant selections on the market!



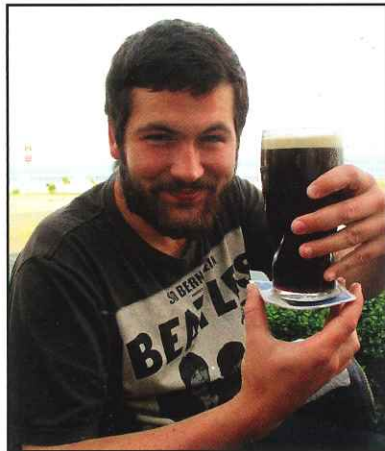
Heuchera  
Midnight Rose



Heuchera  
Citronelle

*Be sure to check out the spreadsheet available on our website (<http://yewdellgardens.org/classes-and-events.html>) and Facebook page.*

# Yew Dell's Internship Program Goes International



We are delighted this spring to welcome Leo Walsh to our internship program – all the way from the Emerald Isle of Ireland. Leo is a talented horticulturist with a passion for plants and gardens that will put him right at home at Yew Dell. He has experience working in nurseries, producing plants for planting throughout Dublin, and most recently completed a work placement at the National Botanical Garden at Glasnevin – a stunning garden we visited in 2012 on one of Yew Dell's international garden tours. He recently placed 2nd in the Ireland Regional Final of the Young Horticulturist of the Year competition run by the John Innes' institute. Be sure to give Leo a warm Kentucky welcome when you see him on the grounds!

---

## Natural Areas and Hiking Trails Expanded by Scouts and Volunteers



Yew Dell's largest pond plays host to beavers, several duck species, blue and green herons and even an occasional flock of sandhill cranes.



Beaver activity is evident all around Yew Dell's several ponds.

Yew Dell is not just for gardeners anymore...

Through the hard work and generosity of a long list of corporations, volunteer groups and scouts, Yew Dell's more than 1 mile of hiking trails offer visitors a chance to see Mother Nature up close and personal. With active beaver communities, fox, deer, turkeys and a tremendous diversity of bird species, a walk in Yew Dell's woods is a great way to spend an afternoon . . . not in the garden! Eagle Scout projects, Girl Scout Gold Service efforts, Cub Scout work days and other volunteer activities, combined with work crews from LG&E and other local companies, have opened up a previously overgrown woodland for hiking and nature watching. The next time you are looking for an afternoon off the beaten path, come hike Yew Dell's trails. You never know what you'll see.



Trail markers, installed through a Girl Scout Gold Award project, direct hikers along two interlocking trail systems.



# GROWING YOUNG GARDENERS



## Newspaper Seed Pots

Celebrate the **45th anniversary of Earth Day** by **Reusing** your old newspapers to make seedling pots! This is hands-down the best way to start your spring seeds indoors. These individual containers are the perfect size for a sprout, and come garden time, there's no stressful transplanting. When the seedling is ready for the outside, tear down the sides of the pot, tease out a few roots and plant the whole thing. The paper will break down in the soil.

### Materials:

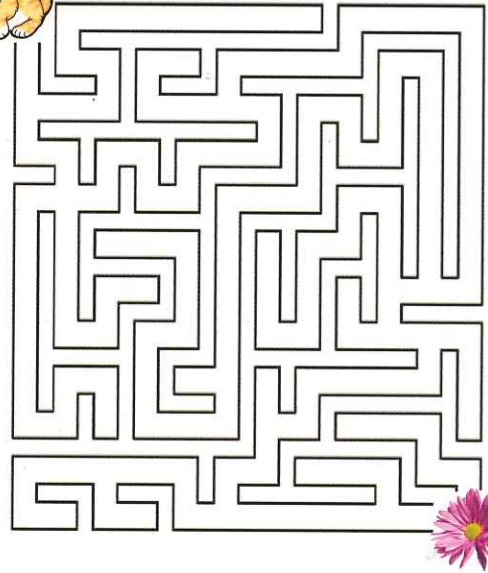
Newspapers (preferably black and white, no toxic dyes)  
Juice can, soup can or any cylinder with one end cut out

### Directions:

1. Spread out a full sheet of newspaper and then carefully split it in half, along the crease.
2. Fold this in half lengthwise, making one long sheet.
3. Turn the paper so that it is now facing you lengthwise.
4. Lay the can on the newspaper so that the closed end overlaps the newspaper about 1 ½-2 inches. Wrap the newspaper over the can and loosely roll the can until all of the newspaper is used and you have a seam at the overlap.
5. Keeping your fingers on the seam to prevent it from unwrapping, turn the can up so you are looking at the open end.
6. Continuing to hold the seam with one hand, begin folding down the excess newspaper into the open end of the can to create a bottom.
7. Turn the can on its bottom and tap several times to help seal the seams. You can also tap it down in the inside with a wooden spoon or smaller cylinder. Once the soil is added the container will hold its shape.
8. Carefully remove the can. *Voila* - A seed pot!
9. Fill to the top with a soilless potting mix. Place the pot in a container that has drainage holes. Plant 2-3 seeds and water the pot and all well. When you water your seed, be sure you water the pot also because the newspaper will wick away the moisture from the soil if you don't.
10. When the seedling is ready to be planted, open up the bottom, tear down the sides and plant the whole thing in the ground and cover with soil.



Help Buckeye and his buddy Bee find the flower.



## Book Reviews

*All are available in the Garden Gift Shop, of course!*

### Bumblebee – J.V Wilson and Adrienne Kennaway

From making a nest in spring to leaving her flourishing colony in autumn, a bumblebee queen's life is a busy one. She pollinates plants, builds wax honey-pots and lays eggs to produce future queens, male drones and all the workers who make honey and defend the colony against intruders. This lyrical life-story, illustrated by an acclaimed wildlife artist, introduces young readers to a complex, fascinating creature and suggests simple ways to encourage bees, whose numbers are in dramatic decline and need all the help we can give. Toddlers can follow the queen's progress through vibrant illustrations while older children learn about nature and how to protect the dwindling bee population through the accessible, informative text.

### Feathers for Lunch – Lois Ehlert

Lois Ehlert's "Feathers for Lunch" is a delightful picture book. The target audience is younger children (1-7) and would be ideal for an adult-child story time read, especially right before an outdoor walk. It tells the story of a cat who escapes his house to prowls outside and hunt birds. However, much to his dismay, he cannot catch anything (due to the bell which his owner has attached to his collar), and is eventually caught himself by his owner. At the very end of the story, a description (including size, food, home, and area) is given of each of the 12 North American birds that the cat pursued. The story is made fun to read through its catchy rhythm and rhyme, and its simple yet elegant illustrations reflect the simple yet fun nature of the story. The main text is large and easy to read, yet there are smaller, more difficult words sprinkled about the pages. These words depict the bell's jingle and the names of the birds that the cat hunts.

# HEALTHY LAWNS NEED HEALTHY SOIL



For more information, call  
**502.634.0400**  
limbwalkertree.com

Fully Insured  
Locally Owned  
Certified Arborists



**NOW OFFERING A 6 VISIT  
LAWN PROGRAM**

FEATURING   
**BIO-TEA**<sup>®</sup>  
PLUS ORGANIC FERTILIZER



## Restoring Kentucky's Native Landscape

We promote native plants and landscape restoration  
to enhance and preserve natural wildlife habitats.

502-259-0454  
www.ecotechinc.com

11321 Decimal Drive, Louisville, KY 40299

## STIFEL

*Investment Services Since 1890*

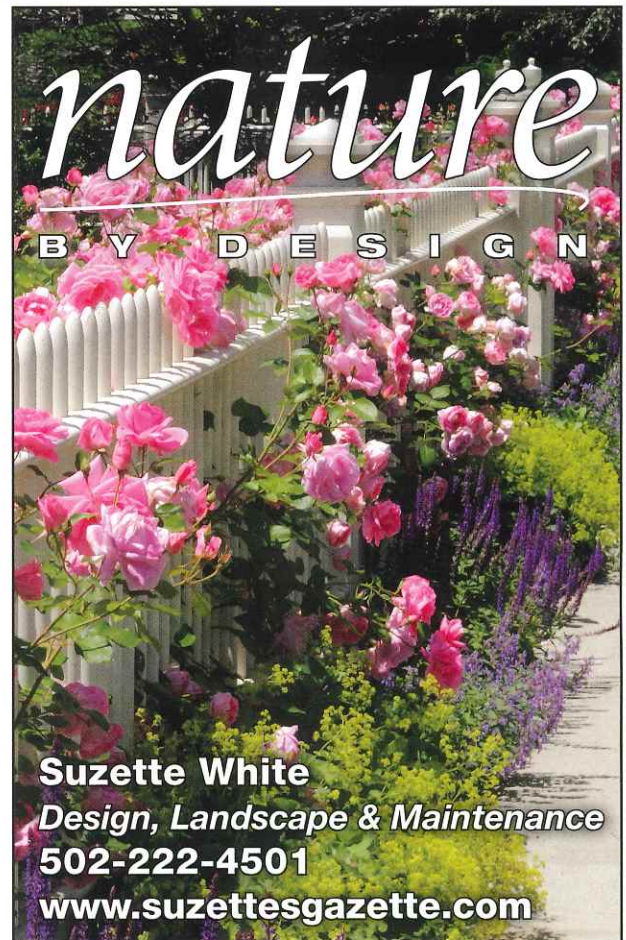
**David S. Whitty**

*Vice President/Investments*

**(502) 420-3247**

600 North Hurstbourne Parkway • Suite 100  
Louisville, Ky. 40222

Stifel, Incorporated | Member SIPC and NYSE



**Suzette White**

*Design, Landscape & Maintenance*

**502-222-4501**

**www.suzettesgazette.com**

# HONORARY AND MEMORIAL DONATIONS

*Purchase of a memorial/honorary bench has been and continues to be an excellent way to remember a loved one, mark a special occasion, or honor a valued friend. Contact a staff member for details.*



## MEMORIAL GIFTS

*In Memory of Mary Doherty Tafel Barnum*

Mr. & Mrs. Patrick Giroir

*In Memory of Willoughby Blocker*

Mr. & Mrs. Kurt Broecker  
Mr. & Mrs. Gary Keibler  
Mr. & Mrs. Hunter Louis  
Ms. Mary Anne Thornton

*In Memory of Charles "Redd" Crabtree*

Mr. & Mrs. David Ray

*In Memory of Ann Dick*

Mr. & Mrs. Kurt Broecker

*In Memory of Irmgard Meichler*

Ms. Karla Drover & Mr. Jeff Jamar

*In Memory of John Nerlinger*

Mr. & Mrs. Kurt Broecker

*In Memory of Maude Sanders*

Mr. & Mrs. Kurt Broecker

*In Memory of Sam Swope*

Mr. & Mrs. Kurt Broecker  
Mr. & Mrs. David Ray

## HONORARY GIFTS

*In Honor of Julie Ballard*

Mr. Patrick McGinnis

*In Honor of Lisa & Charles Barr*

Mr. & Mrs. Robin Cooper

*In Honor of Kurt & Mary Broecker*

Ms. Nancy Rust

*In Honor of Mrs. Owsley Brown II*

Ms. Mary Anne Thornton

*In Honor of Marian Klein Koehler*

Mr. Robert M. Koehler

*Gifts received between  
12/10/14 - 3/24/2015.*

*We apologize for any errors or  
omissions in this list.*

*In Honor of Mary Rounsavall*

Dr. & Mrs. Charles C. Barr  
Mrs. Mary Louise Barr  
Mrs. Edith S. Bingham  
Mr. & Mrs. C. Barret Birnsteel  
Mrs. Eunice Blocker  
Mrs. Nell Pearce Bradley  
Mr. Paul Bradshaw  
Mr. & Mrs. Kurt Broecker  
Mr. & Mrs. Hewett Brown  
Dr. & Mrs. Paul Cappiello  
Mr. & Mrs. Robin Cooper  
Ms. Sandra Frazier  
Mr. & Mrs. Laman Gray  
Mr. & Mrs. David Grissom  
Ms. Bonnie Heaton  
Mr. & Mrs. David Heintzman  
Ms. Louise Fitzhugh Hickox  
Mr. Don Hightchew  
Ms. Leslie Isaacs  
Mr. & Mrs. Jeff Jarboe  
Mr. & Mrs. David A. Jones  
Mr. & Mrs. Daniel H. Jones  
Mr. & Mrs. Lee Kirkwood  
Mr. & Mrs. Hunter Louis  
Mrs. Janice Morgan  
Mr. & Mrs. Robert Nunnelley, Jr.  
Mr. Phil Payne, Jr.  
Mr. & Mrs. David Ray  
Mr. Robert W. Rounsavall, III  
Mr. & Mrs. Allen Schubert  
Ms. Gayle Kussoy Shoemaker &  
Mr. Chris Shoemaker  
Ms. Judith L. Smith  
Mr. & Mrs. William Street  
Ms. Mary Anne Thornton



**Paul Clinton**  
ISA Board Certified Master Arborist  
Kentucky Certified Nurseryman

## Beechwood Trees & Gardens

*Since 1988*

**[bwtrees.com](http://bwtrees.com)**

Office 502-241-0471 ☎ Cell 502-296-3825 ☎ [pclinton@bwtrees.com](mailto:pclinton@bwtrees.com)



## GREENHAVEN TREE CARE

244-8770

**EAB TREATMENT / SPRING FERTILIZATION**

**[WWW.GREENHAVENTREECARE.COM](http://WWW.GREENHAVENTREECARE.COM)**



# YEW DELL BOTANICAL GARDENS

PO Box 1334 • 6220 Old LaGrange Road • Crestwood • Kentucky • 40014  
yewdellgardens.org

NON PROFIT ORG  
U.S. POSTAGE  
PAID  
Louisville, Ky.  
PERMIT #879



Yew Dell Botanical Gardens is a partnership project of the Garden Conservancy, a national, non-profit organization founded to help preserve America's exceptional gardens.



## YEW DELL BOTANICAL GARDENS

April • May • June 2015

 **'LIKE' US ON FACEBOOK**

The 5th Annual Farm to Table Dinner – **3**  
Get Your Tickets Now!

Events & Programs **4 & 5**

Yew Dell's Internship Program Goes International **8**

**SPECIAL THANKS TO:**  
Publishers Printing and United Mail, Inc.