



## YEW DELL ADDED TO NATIONAL REGISTER

*Gardens have become a place of "National Destination!"*

In August, The National Park Service approved Yew Dell's nomination to the National Register of Historic Places. For a place that just 10 years ago was threatened by bulldozers to now be listed as one of the Nation's historic treasures is nothing short of astounding.

Just 9 years ago, during a visit to a new and raw Yew Dell Gardens, Catha Grace Rambusch, former manager of the Catalog of Landscape Records at Wave Hill, commented that Yew Dell would become a place of "national destination." During a return visit this fall, she beamed "I knew it would become a national destination

and that is exactly what has happened. I couldn't be more pleased." Charles Birnbaum, founder and president of the Cultural Landscape Foundation, speaking at Louisville's 2011 Idea Festival mused, "I see so many historic properties with good intentions that simply miss the point. Yew Dell is a place that continues to set the bar for honoring and preserving its past while moving forward with amazing energy and creativity. Today, the significance of Theodore Klein's contributions have been recognized with National Register listing. I predict that decades from now the Federal program will have to revisit the nomination to recognize the extraordinary work being done here today."



## YEW DELL GARDEN EXPRESS

Have you ever seen an entire town inside a castle? Well, climb aboard and bring the kids (and grandkids too!) to Yew Dell this holiday season for the first-ever Yew Dell Garden Express – a fabulous snow village and model train display. This magical exhibit has been created by master model builder Bob Irmscher with support from some of the most talented model train enthusiasts in the region. In addition to the trains, kids of all ages will enjoy scavenger hunts, weekend visits from Santa and more!

The Garden Express will be on display in the Yew Dell Castle November 25-27, December 3-4 and 10-11, during open hours. Santa will visit 11/25-26, 12/3 and 12/10 from 11 to 2. Check the Yew Dell website for more details.

While on the grounds, plan to visit the Garden Shop to pick up some holiday gifts for the gardeners on your list.

OUR GIFT SHOP HAS EXTENDED HOURS DURING THE FIRST TWO WEEKENDS OF DECEMBER!

# LETTER FROM THE DIRECTOR

Sometime last year, after more than 35 years, I became a former runner. The 50 year-old knees finally won a 10-year argument with my brain. So last spring, not at all willing to relegate myself to the dustbin of the fitness world, I took up cycling.

Now as any long-time runner will tell you, the ability to spend the miles in deep, aerobic meditation is a tough thing to give up. And while it is possible to reach the same place on a bike, one does have to pay a bit more attention. Hitting a pothole at a modest jog can result in a twisted ankle. Hitting a pothole at 30 mph on a steep downhill curve – well use your imagination!

One major advantage of cycling, however, is that you can cover a lot more ground in a given chunk of time; plenty of time to check out the area's horticulture. The Louisville area is blessed with beautiful parks, gardens and trees. On the other hand, almost everywhere one looks, volcano-mulched trees, meatball-pruned forsythias and ineffectively landscaped properties add up to a tremendous number of missed opportunities to reduce heat-island effect, cut heating/cooling requirements and generally make Louisville a

more beautiful place to live. Through our programs at Yew Dell, we work to inspire area citizens to build and demand a better horticultural state of affairs across the community.

Our **newly-launched website** is packed with garden and plant information from a "Garden Tips" section to online access to our plant collections database, and more – all designed to support that better state of affairs. Our planned **greenhouse** will demonstrate how to build and maintain such a facility with minimal utility requirement. Our current **Every Tree Tells a Story** exhibit highlights the history and value of the trees in Louisville's beloved Olmsted Parks among others. We're even working with Kentucky's threatened native plant species to make sure they remain part of both our natural and managed plant communities into the future.

So regardless of the state of your knees, I hope you'll take advantage of what Yew Dell has to offer and use it to build a greener and more beautiful community.

*—Paul Cappiello*

Executive Director

## JOIN US!

Yew Dell membership offers a wealth of benefits including admission all year long, discounts on Yew Dell classes, lectures and workshops, invitation to member-only events and early admission to the annual Plant Sale and Garden Market.

Members also receive discounts at area nurseries and garden centers and coupons and gift certificates for plants and garden supplies—membership pays for itself several times over! And all of our \$150 and above members will received a special plant dividend available only at our annual plant sale. For Silver Cloud and above memberships we're even offering guest passes for your friends and family members.

### LEVELS OF GIVING

- Virginia Bluebells \$35 (single)
- Silver Cloud \$50-\$149 (family)
- Weeping Katsura \$150-\$499
- Golden-Berried Holly \$500-\$999
- The Dell Society \$1000 and above

Name \_\_\_\_\_

Address \_\_\_\_\_

City \_\_\_\_\_ State \_\_\_\_\_ Zip \_\_\_\_\_

Phone (\_\_\_\_) \_\_\_\_\_

Email

VISA Mastercard Discover (CIRCLE ONE) Amount: \$ \_\_\_\_\_

Card Number: ---

Expiry Date: - (MM-YY) Security Code:

Signature \_\_\_\_\_

*For a list of membership benefits and more information about events and programs, visit our website at [www.yewdellgardens.org](http://www.yewdellgardens.org). Please return this form to:*

**Yew Dell Botanical Gardens  
P.O. Box 1334  
Crestwood, KY 40014**

MEMBERSHIP FORM



# STAR PERFORMERS IN THE GARDEN

## Top herbaceous perennials from 2011

Following yet another in the long, continuous string of abnormal gardening years, we figured it time once again for the annual list of garden plant winners. Each year, our staff and volunteers plant hundreds of plants; some old standards and others brand new varieties. As the season winds along, we track performance of our new plantings along with longer established specimens to tease out the winners from the losers – those that, come September, still look fresh and happy in the garden. We figure, better to let us try to kill them before you plunk down hard-earned cash to experiment for yourself! So with input from all our gardening staff, here's the list of herbaceous perennial winners for 2011.

***Amsonia hubrichtii* (Arkansas Blue Star):** This southeast North American native is a dry, sunny-site standout. Subtle soft blue spring flowers are born atop a 3' tall mass of spectacularly fine-textured foliage that turns brilliant yellow in fall. The ferny mound moves gracefully in any light breeze adding wonderful motion to the garden.\*\*\*

***Nepeta xfaassenii* 'Walker's Low' (Cat Mint):** This flower machine is by far the best of the cat mints. In full sun and well-drained soil, the gray-green foliage is covered in early summer with soft lavender/blue flowers. With a light shearing after flowering, it re-blooms nicely a second time.\*\*\*

***Salvia guaranitica* 'Black and Blue' (Brazilian Blue Sage):** What a plant! This 3-4'-tall sun worshiper offers splendid blue flowers all late summer and fall. It has few pests and despite the lack of red in its flowers, it is a hummingbird magnet. Needs well drained soil for best winter survival.

***Spigelia marilandica* (Indian Paint Brush):** This Kentucky native woodland plant is as at home in the shade as it is in full sun. Checking in at 2' tall and spreading slowly, the bright green foliage looks great all summer. Brilliant yellow-tipped red flowers cover the plant in early summer and return sporadically throughout the summer. Another hummingbird magnet.\*\*\*

***Vernonia lettermannii* (The Very Cool Ironweed – sorry no common name out there!):** If we have anything to do with it, this will be a Klein Award winner in the future (we're lobbying!) Unlike its old-field cousins, the 6-10'-tall ironweeds (*Vernonia noveboracensis* and relatives), this compact, 2' mound of fine-textured foliage is a delightfully refined plant for the sun garden. In mid-summer and through fall, plants are covered with bright purple flowers, attracting hordes of butterflies. Extremely drought tolerant, it can also handle brief flooding... what else can it do for your garden?! The cultivar 'Iron Butterfly' is an excellent selection that is becoming more widely available.

\*\*\*Theodore Klein Plant Award Winner

\* If you are interested in the full list of 2011 winners and losers, check the Garden Tips section of the new website.



*Amsonia hubrichtii*  
Arkansas Blue Star



*Nepeta xfaassenii*  
'Walker's Low' (Cat Mint)



*Salvia guaranitica*  
'Black and Blue' (Brazilian Blue Sage)



*Spigelia marilandica*  
(Indian Paint Brush)



*Vernonia lettermannii*

# FALL 2011 PROGRAMS

## Autumn's Gold Harvest - Slow Food Cooking Class

Slow Food USA Southeast Governor and Brown-Forman chef, Mark Williams will unveil exquisite recipes that will help you make the very best of the autumn garden. Register now – these classes sell out quickly!

**November 13; 2-4pm**  
**\$20/\$25 members/non-members**

## Third Thursday Concert Harry Pickens Trio

This popular group always delivers an incredible evening – don't miss this one!

**November 17; 7:00-8:30pm**  
**\$15/\$20 member/nonmember**

## Yew Dell Garden Express

An Old Fashioned Train Exhibit in the Castle. Begin a tradition with your family. Join us for a Holiday Train exhibit in the castle, scavenger hunt on the grounds and Santa Claus!

**November 25-27, December 3-4 and 10-11, during open hours. Santa will visit November 25 and 26, December 3rd and December 10th from 11 am to 2pm.**  
**Free with regular admission**

## Holiday Wreath Workshops

Design and make a unique winter wreath with direction from nurseryman Jules Klein and made from fresh greens harvested at Yew Dell. Participants will be provided the necessary materials and tools to create a wreath but should bring their own gloves and pruners. Express your creativity by making a holiday wreath to take home--the finished wreath will measure 22-24 inches.

**December 3; 10am & 12:30pm**  
**\$30 members/\$35 non-members**

## Every Tree Tells a Story

Don't miss the chance to catch this national travelling exhibit from The Cultural Landscape Foundation. This collection of 12 outdoor signboards highlights the history, threat, and ways to become involved with 12 unique and threatened trees and tree collections across the country – one of which is Louisville's own Olmsted Parks and Parkways. The display is a partner exhibit to a concurrent photographic exhibit showing at Louisville's 21C Museum Hotel. Be sure to catch them both.

**September through December**  
**Free with regular admission**

## 2012 EVENTS

**Volunteer Appreciation Day**  
February 11

**Hellebore Day**  
April 7

**Plant Sale**  
April 28-29

**Sculpture Show Opening**  
May 18

**Sculpture Show**  
May 18 through July 31

**Farm to Table Dinner**  
June 24

**Hummingbird Festival**  
August 25

**Twilight**  
To Be Determined

**Boo-Dell**  
October 27

**Wreath Workshops**  
December 1





## IRELAND 2012!

Join us next June for this gardener's tour of some of the best horticulture of the Emerald Isle. We'll enjoy spectacular scenery, exquisite garden design and follow in the footsteps of some of the great 19th-century plant explorers. Our England (2010) and Italy (2011) tours were huge successes so this one will fill up quickly.

**Call (502-241-4788) or email Karla Drover (karlad@yewdellgardens.org) for more information.**

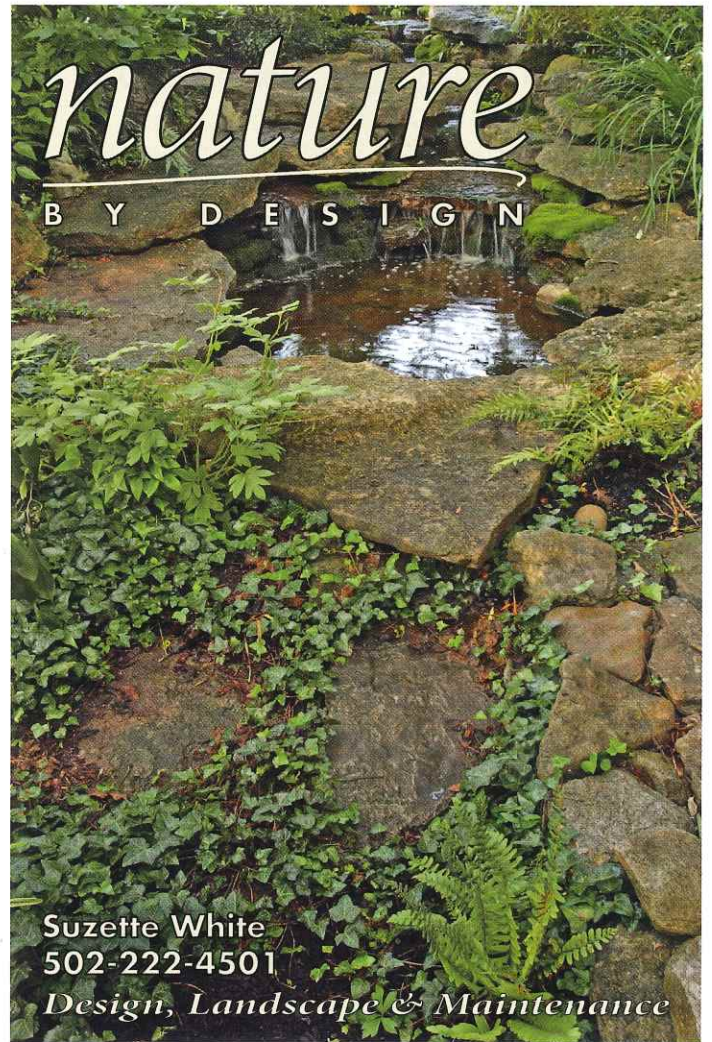


**GREENHAVEN  
TREE CARE  
INC.**

- Pruning
- Tree & Stump Removal
- Consulting
- Cabling
- Fertilization

Office (502) 244-8770  
FAX 244-8771

1901 Williamson Court  
Louisville, Kentucky 40233



*nature*  
BY DESIGN

Suzette White  
502-222-4501  
*Design, Landscape & Maintenance*



**Jo Anne  
Fischer**

**In The Garden**

*Fall & Winter Specialties:  
Bulb Planting & Winter Pruning  
Call now for scheduling  
Phone: 502-432-6048  
joanneinthegarden@gmail.com*

**College Bound Advising, LLC**



**Stephen D. Grissom**

**Over 40 Years of  
Admission Counseling  
Experience!**



**Denise Park Parsons**

- Pre-College Planning
- Transition to College
- Develop & Refine College List
- Applications for Admission, Scholarships & Financial Aid

**Call or Email for a Free Consultation!**

**11405 Park Road, Louisville, KY 40223 • 502.244.7301**  
consultsdg@aol.com • consultdpp@aol.com

**STIFEL NICOLAUS**

*Investment Services Since 1890*

**David S. Whitty**  
Vice President/Investments  
**(502) 420-3247**

4969 U.S. Highway 42 • Suite 1000  
Louisville, Kentucky 40222

Stifel, Nicolaus & Company, Incorporated | Member SIPC and NYSE

# HONORARY AND MEMORIAL DONATIONS

## MEMORIAL GIFTS

### *In memory of Christopher Bounnell*

Mr. and Mrs. John G. Carroll

### *In memory of Margaret Kulp*

Mr. and Mrs. William C. Ballard

Ms. Kaye Bowles-Durnell

Mr. and Mrs. Hewett Brown

Mrs. Elizabeth Davis

Ms. Karla Drover

Ms. Connie Goodman

Mr. and Mrs. Hunter Louis

Mr. Phil Payne, Jr.

Mrs. Albert F. Reutlinger

Ms. Jane Townsend

## IN HONOR OF

### *Mary Rounsavall*

Mr. and Mrs. Earl Dorsey

Mrs. Joan Whittenberg

Up to 9/30/11. We apologize for any errors or omissions in this list of gifts.

*Purchase of a memorial/honorary bench has been and continues to be an excellent way to remember a loved one, mark a special occasion, or honor a valued friend. Contact a staff member for details.*



## STAFF CHANGES

After 5 years of dedicated service to Yew Dell, we were sad to say good-bye to Iris Goode and her husband Ed Jutt.



Iris worked in Yew Dell's development department, managing our donor/member database, managing our wedding/rental business and serving as point person on events such as the Hummingbird Festival and Boo Dell. Ed was a faithful and dedicated volunteer who tackled everything from parking cars to driving the golf cart shuttle and a whole lot more. We all wish them the very best on their move to North Carolina and with their new professional adventures.

We'd also like to welcome two new staff members to the Yew Dell team. Cheryl Leifer, who has worked the last two seasons in our visitor center, has taken a new position as Yew Dell's Membership Officer, specifically as our Member and Donor Database and IT Specialist. Cheryl has an extensive background in IT and database management and also just happens to be an enthusiastic gardener. Jackie Gulbe has also joined Yew Dell as Rental and Events Coordinator. In that capacity, Jackie will be managing wedding and other rentals and helping Yew Dell maximize our rental and tour business. Jackie has extensive background in media relations, event management and just happens to be another avid gardener.

We hope you'll welcome them the next time you are out for a visit.





## WE'RE BIG ON NURTURING.

With our roots strongly in Kentucky, Mountjoy Chilton Medley LLP helps businesses and individuals grow the seeds of their goals well beyond sprout. Let us tend to the growth plan you have in mind.



502.749.1900 | [www.mcmcpa.com](http://www.mcmcpa.com)

An Independent Member of Baker Tilly International

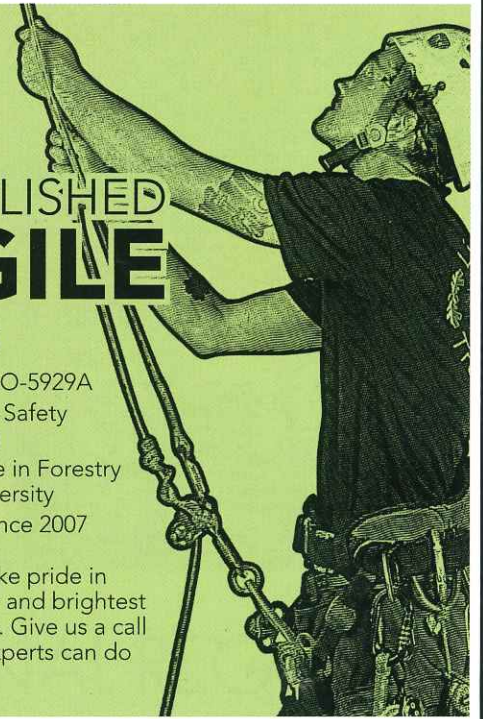
LOUISVILLE | LEXINGTON | COVINGTON | FRANKFORT

## ACCOMPLISHED & AGILE

### Meet T.J. Powell

- Certified Arborist SO-5929A
- Certified Tree Care Safety Professional (CTSP)
- Bachelor of Science in Forestry from Clemson University
- With Limbwalker since 2007

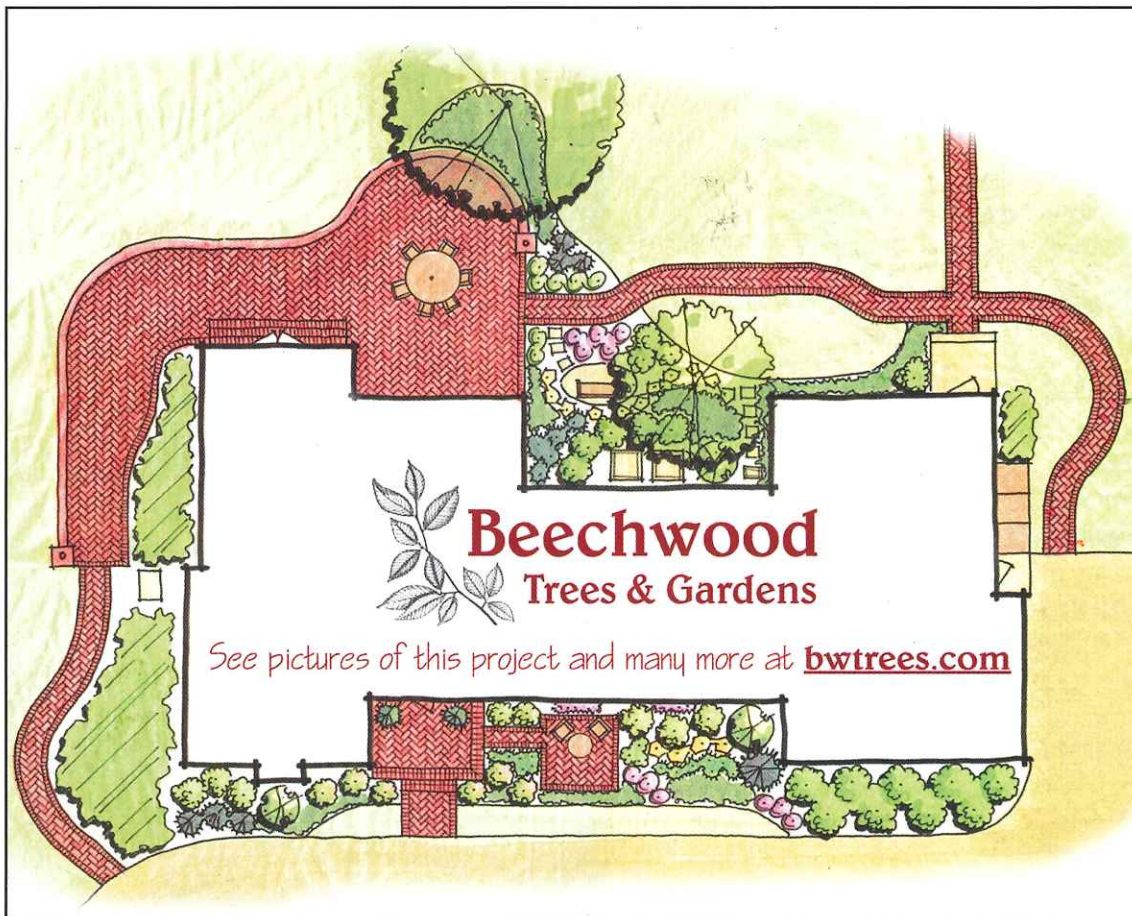
At Limbwalker, we take pride in staffing only the best and brightest to care for your trees. Give us a call to learn what our experts can do for your landscape.



Limbwalker  
Tree Service

502.634.0400  
[www.limbwalkertree.com](http://www.limbwalkertree.com)

Fully Insured • Locally Owned  
Certified Arborists





# YEW DELL BOTANICAL GARDENS

6220 Old LaGrange Road • Crestwood • Kentucky • 40014

NON PROFIT ORG  
U.S. POSTAGE  
PAID  
Louisville, Ky.  
PERMIT #879



Yew Dell Botanical Gardens is a partnership project of the Garden Conservancy, a national, non-profit organization founded to help preserve America's exceptional gardens.

## THE CASTLE CHRONICLES

NEWSLETTER • FALL 2011

### OPEN HOURS

#### APRIL TO NOVEMBER:

Monday through Saturday: 10am to 4pm  
Sunday: noon to 4pm

#### DECEMBER TO MARCH:

Monday through Friday: 10am to 4pm

#### SPECIAL HOLIDAY HOURS:

Saturday, December 3: 10am to 4pm  
Sunday, December 4: noon to 4pm  
Saturday, December 10: 10am to 4pm  
Sunday, December 11: noon to 4pm

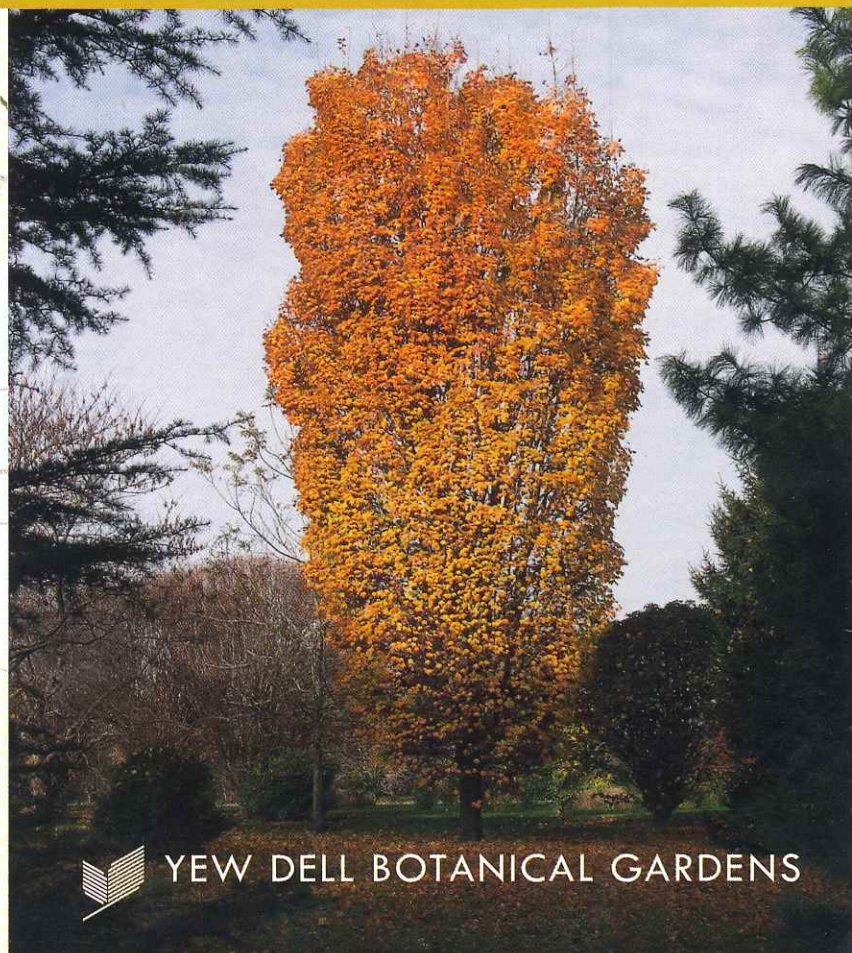
Don't forget to bring your membership card to get 10% off at the garden shop!



'LIKE' US ON FACEBOOK

#### SPECIAL THANKS TO:

Publisher's Printing and United Mail, Inc.



YEW DELL BOTANICAL GARDENS